

# STRATEGIC SANITATION SOLUTIONS

City of Ennis, TX



Underground Refuse Systems



Date

# Who We Are



Jay Wheeler

CEO/Founder  
Underground Refuse Systems



Scott  
Dixon

City Manager  
City of Ennis



Ben Nibarger

Assistant City Manager  
City of Ennis

**#ICMA2019**



## Public Private Partners



**#ICMA2019**





## Downtown Master Plan



MESA + PLANNING



#ICMA2019



# *Before and after*







CONNECT



OVERCOME



PROVIDE



ATTRACT

## *Downtown Ennis Master Plan*

Downtown was once the center of community life and will be again with the four step strategy outlined in the City of Ennis Downtown Master Plan





## *Creating Connections*

### *I45 Market to Downtown Market*

- 🌿 Allows traffic and pedestrians to flow freely between Downtown and I45 Market
- 🌿 Introduces iconic gateway into Downtown Ennis



# Overcoming Obstacles



## Physical Barriers

- 📍 Replaces 100-year-old infrastructure to support downtown living, new restaurants and retail

## Activated Alleys

- 📍 Creates additional public gathering space
- 📍 Provides an intimate feel for outdoor dining



# *Providing Downtown Destinations*



## *Welcome Center*

- 📍 Entry point for all guests, investors, developers and more
- 📍 Creates “one stop shop” with Economic Development and the City Planning Team in one location



# *Providing Downtown Destinations*



## *Minnie McDowell Park*

- 📍 Create environment where people want to stay longer
- 📍 Transform downtown into experiential destination
- 📍 Creates a central gathering space in the heart of downtown



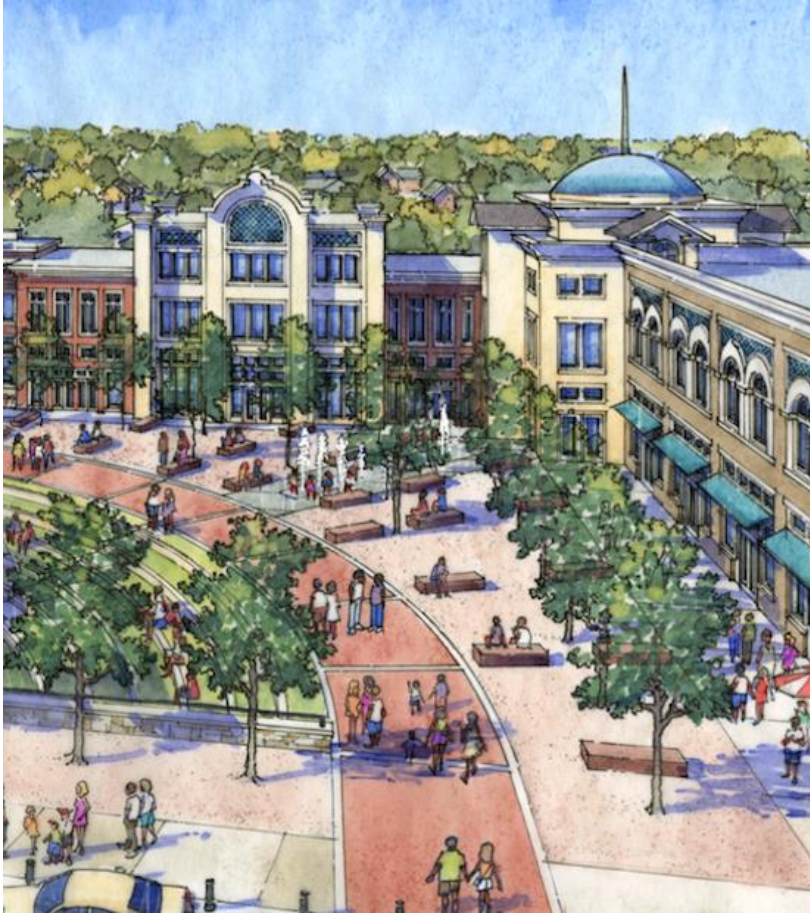
# *Providing Downtown Destinations*



- 🌱 Creates retail anchors on both sides of downtown
- 🌱 Provides a public gathering space
- 🌱 Eliminates curbs creating handicap and stroller accessibility



# *Attract Downtown Businesses*



## *North & South Plaza*

- 📍 Creates retail anchors on both sides of downtown
- 📍 Provides a public gathering space

## *Economic Vitality*

- 📍 Utilizes 200,000 sq ft of retail space once fully revitalized
- 📍 Increases spending on diverse goods and services



# *About the System*



Underground Refuse Systems is the exclusive North American licensee for Nord containment and collection technology







# As Seen On



#ICMA2019



# *Global Systems*



Florence, Italy



Barcelona, Spain



Disneyland Paris

Also in Ukraine, Turkey, Argentina, Russia



# Easy to Use





*Keep people out of trash*





# *Eliminates Odors-Rodents*



**UNDERGROUND**  
REFUSE SYSTEMS

**ENNIS**  
TEXAS  
*The bluebonnet spirit of Texas*

**#ICMA2019**







# *Eliminates Overflowing Trash*



**UNDERGROUND**  
REFUSE SYSTEMS

**ENNIS**  
TEXAS  
*The bluebonnet spirit of Texas*

**#ICMA2019**



# Smart sensor technology

## Underground

LEVEL  
34%

LAST SERVICED  
N/A N/A

LAST UPDATED  
08:34 Wed 26 Jun

CONTAINER TYPE  
Underground Unit

CONTENT TYPE  
Municipal solid waste

LOW THRESHOLD  
10%

HIGH THRESHOLD  
80%

SAMPLING INTERVAL  
15 mins

REPORTING INTERVAL  
24 hrs

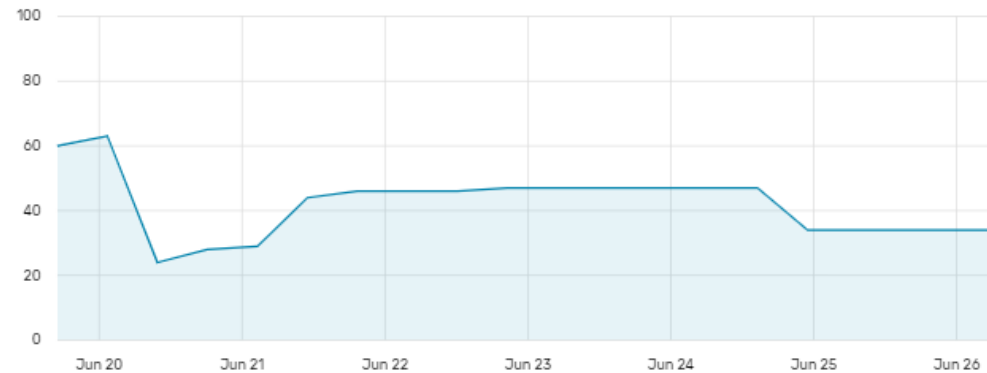
ROUTE PROFILE  
Driving

MANDATORY PICKUP ON  
N/A

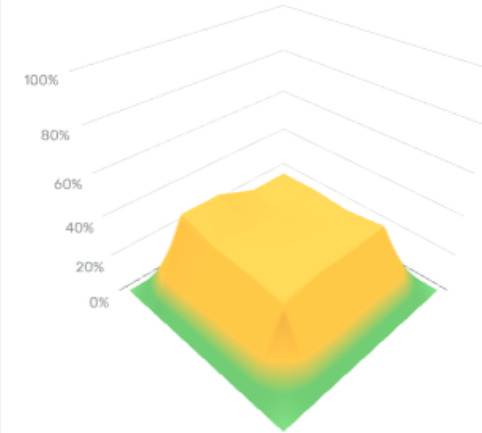


DAY WEEK MONTH QUARTER YEAR CUSTOM

EXPORT TO CSV X



MULTI-POINT GRAPH



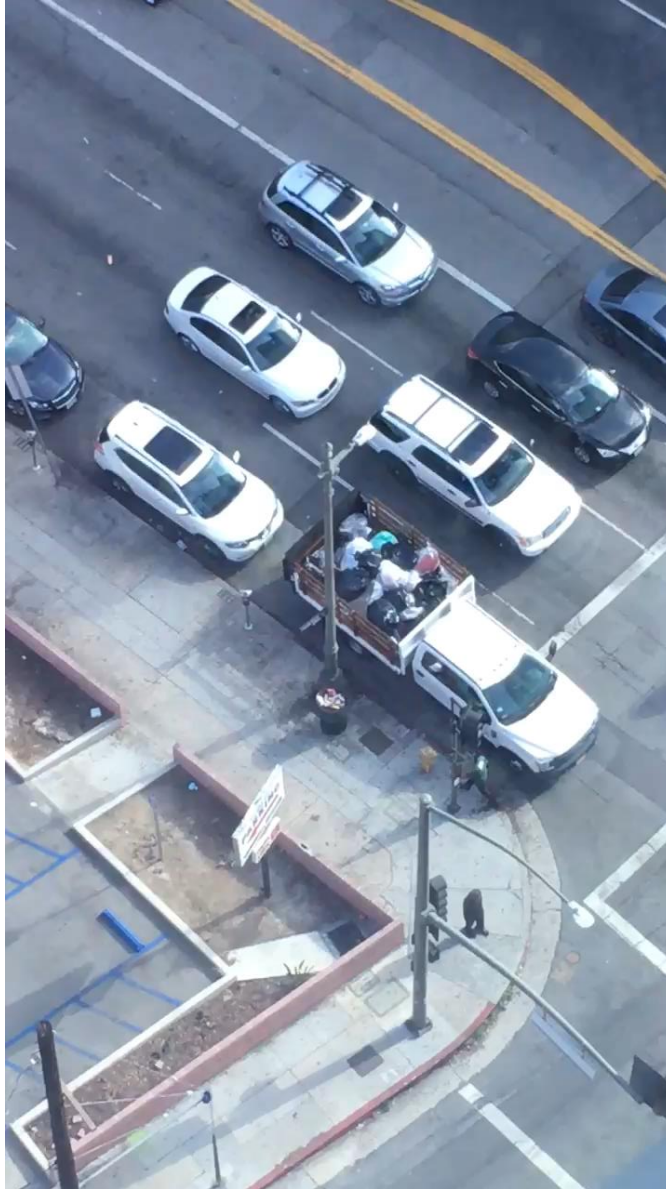
Time of reading	Level	Temperature	Distance	Min. Distance	Max. Distance
08:34 Wed 26 Jun	34 %	87.8 F	76.1 in	68.8 in	78.8 in
00:09 Wed 26 Jun	34 %	82.4 F	75.9 in	70 in	79 in
15:44 Tue 25 Jun	34 %	122 F	75.9 in	70.2 in	79.8 in
07:22 Tue 25 Jun	28 %	84.2 F	82.1 in	67.8 in	84.4 in
22:57 Mon 24 Jun	24 %	89.6 F	86.1 in	70.1 in	85 in
14:32 Mon 24 Jun	22 %	127.4 F	87.6 in	72 in	85.3 in



# *Smart sensor technology* *Reduce traffic and emissions*



Street containers 22:1



**#ICMA2019**



# *Reduces Illegal Dumping*





# *Improves Safety*



New Jersey 2016

Crime Prevention  
**CPTED**  
SECURITY  
Through Environmental Design



NYC 2016







# *Withstands Elements*

- 🌿 High Winds
- 🌿 Salt Air
- 🌿 Heavy Rain
- 🌿 Snow
- 🌿 High Water Tables





## *Saves Space*



Large Bins 15:1 ratio



Underground dumpster 1:1 ratio with  
8-yard above ground dumpster

# *Eliminates Enclosures*





# *Works over* parked cars



# *Aesthetically Pleasing*

- 🌱 Powder coated carbon steel
- 🌱 Multiple color options
- 🌱 Wraps
- 🌱 Innovative
- 🌱 Raises property value
- 🌱 Graffiti Resistant
- 🌱 Compliments new construction





# Truck Features

- 🌱 Chassis
- 🌱 Crane with backup
- 🌱 Hook Lift
- 🌱 Roll off Compactor
- 🌱 Support/training



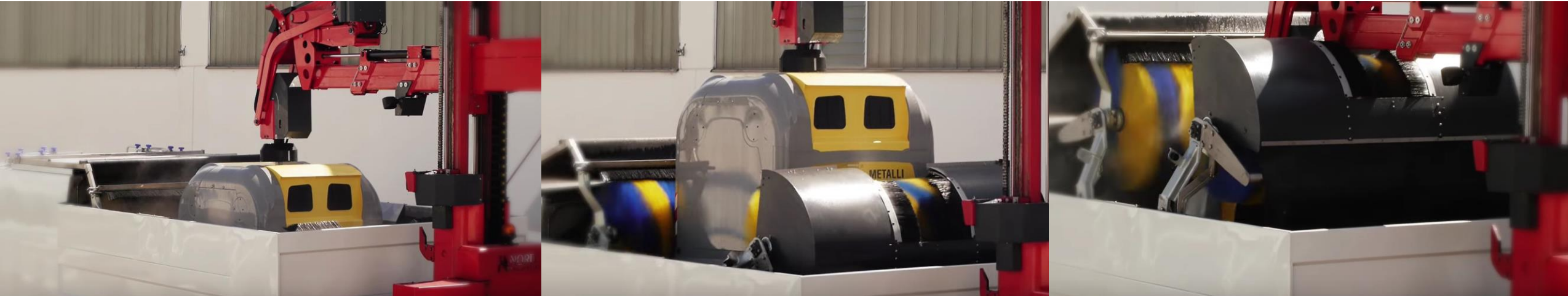
# Chassis Manufacturers



#ICMA2019



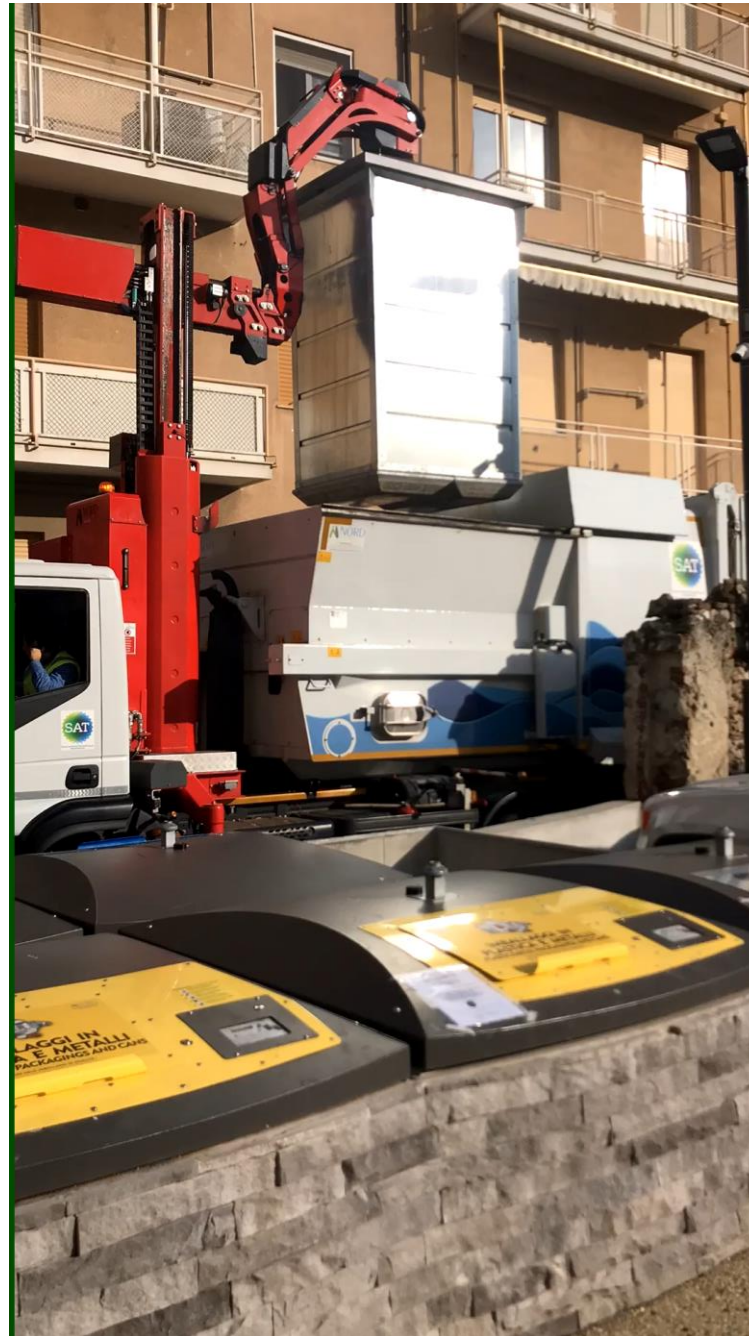
# Truck Equipment



- 🌱 Chassis
- 🌱 Crane with backup
- 🌱 Hook Lift

- 🌱 Roll Off Compactor
- 🌱 Washing Machine (optional)
- 🌱 Snow Removal (optional)

*Keep units clean*





# *Made in the USA*

Vaults currently made in the USA  
2020: Containers  
2021: Truck parts





## Downtown Master Plan



MESA + PLANNING



#ICMA2019





# *Thank You*

Follow us:



UndergroundRefuse



@URefuse



UndergroundRefuse



UndergroundRefuse

**UNDERGROUND**  
REFUSE SYSTEMS



22 W Monument Ave  
Suite 7  
Kissimmee, FL 34741

## #ICMA2019