



THE MTAS MODEL

Margaret Norris

Executive Director, UT - Municipal Technical Advisory Service

October 23, 2019



OCTOBER 20–23, 2019



MUSIC CITY CENTER, NASHVILLE, TN



#ICMA2019





WHO IS MTAS?

Who is MTAS?



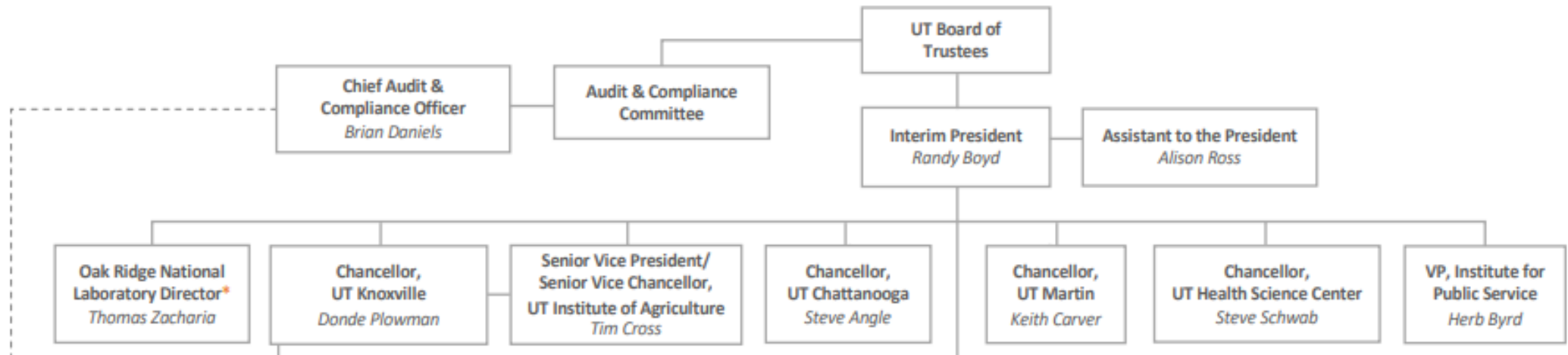
#ICMA2019

Who is MTAS?

- An agency of the Institute for Public Service (IPS) at UT

 THE UNIVERSITY OF TENNESSEE

August 2019



#ICMA2019

Who is MTAS?

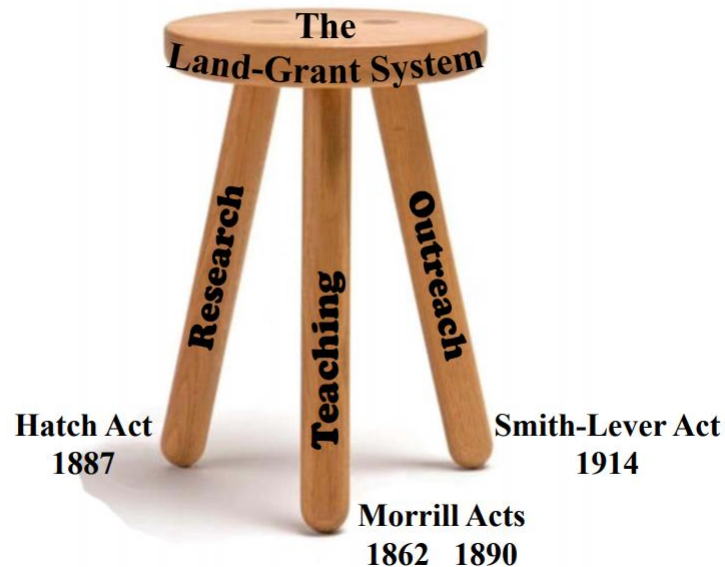
- Staff of 53 FTEs
- Subject matter experts in multiple fields
 - General management
 - Finance
 - Legal
 - Public works
 - Human resources
 - Utilities
 - Emergency services
 - Research
 - Codification
 - Training



WHAT IS MTAS?

What is MTAS?

- Created by state statute in conjunction with the Tennessee Municipal League
- An outreach arm of the land grant university
- Founded to provide research, training and field consultative services



#ICMA2019

What is MTAS?

- Original statutory requirements:
 - Fiscal administration
 - Accounting
 - Tax assessment and collection
 - Law enforcement
 - Improvements and public works
 - Any and all matters relating to municipal government

What is MTAS?

- A consulting firm assisting TN cities and towns
- Today, in state statutes 22 times



WHEN WAS MTAS STARTED?

When was MTAS started?

- April 15, 1949
- We celebrated 70 years on tax day this year



WHERE IS MTAS?

Where is MTAS?

- Only in Tennessee, but everywhere in Tennessee

Where is MTAS?



#ICMA2019



WHY MTAS?

Why MTAS?



Photo courtesy of
Getty Images

#ICMA2019

Why MTAS?

- Herb Bingham, Tennessee Municipal League Executive Director



HOW MTAS?

How is MTAS Funded?

- 1% of the 4.0603% of state shared sales tax
- Line item budget in the state's budget
- Training revenue
- Codification services
- Grants/endowments

How does MTAS work with the state?

- 22 mentions in state law
- Contract with AOC
- CMFO
- WWFB
- TDEC
- Comptroller

How does MTAS work with the League?

- Annual legislative review
- Instructors for annual conference
- EOA
- General research
- Concerns with issues shared freely

How does MTAS work with state partners?



#ICMA2019

THE MTAS MODEL

CUSTOMER PERSPECTIVE

Eric Stuckey

TCMA President

City Administrator of Franklin

Ted Rogers

Immediate past TCMA President

City Manager of Collegedale



MTAS

Margaret Norris
Executive Director
(865) 974-0411

Margaret.norris@Tennessee.edu
<http://www.mtas.tennessee.edu/>

THANK YOU

Questions?

ICMA | conference