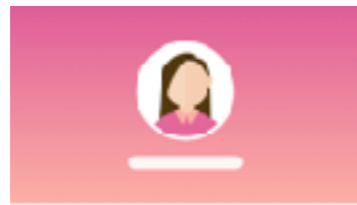


# Connect!

ICMA's Social Network



Industry \_\_\_\_\_  
Email \_\_\_\_\_  
Address \_\_\_\_\_  
Nationality \_\_\_\_\_

Sign in to your account

Email \_\_\_\_\_  
Password \_\_\_\_\_  
Forgot password? \_\_\_\_\_

LOGIN



No account? [Sign up](#)

Select the features you want to activate

Events	<input checked="" type="checkbox"/>	Groups	<input type="checkbox"/>
Forums	<input checked="" type="checkbox"/>	Media Center	<input checked="" type="checkbox"/>
Networking	<input checked="" type="checkbox"/>	Messaging	<input checked="" type="checkbox"/>
Directory	<input checked="" type="checkbox"/>	Job Board	<input checked="" type="checkbox"/>

## ICMA Member Profiles

- Use standard profile fields or create custom ones.
- Decide what information is required and when members should complete it.
- Customize how profiles are organized in our platform.
- Craft the perfect user profile for our community easily and directly.

## Flexible Sign-On Mode

- Full control over how users join and login the ICMA social network.
- Optional: Open to anyone or invite-only.
- Users can log in with an email, a social network, or an SSO.

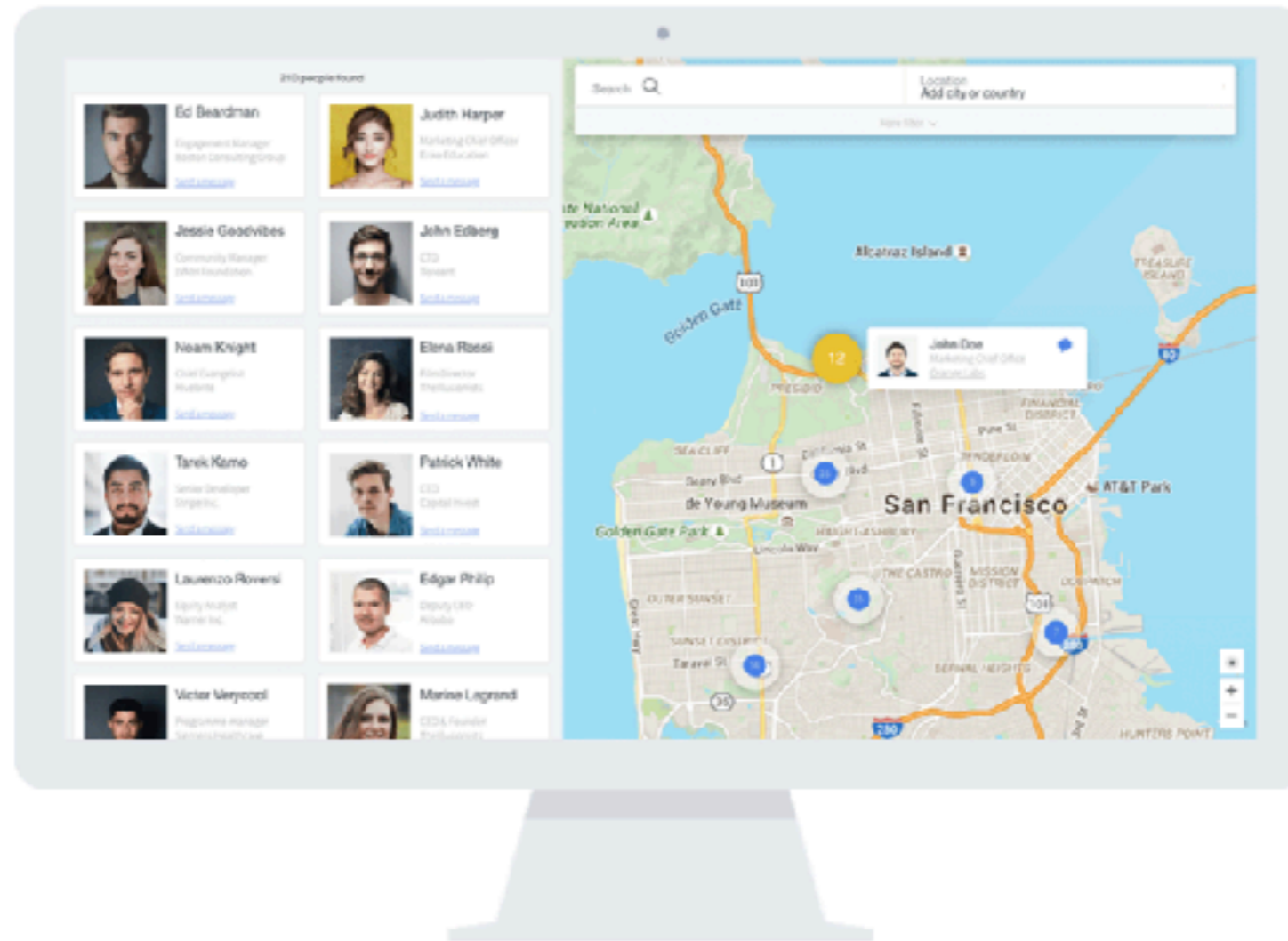
## Rich Features for Members & Guests

- Fully modular platform - Desktop, Mobile (iOS & Android), and Responsive.
- Offers a wide set of features adapted to different types and sizes of community.
- Allows us to introduce new features to your community over time.



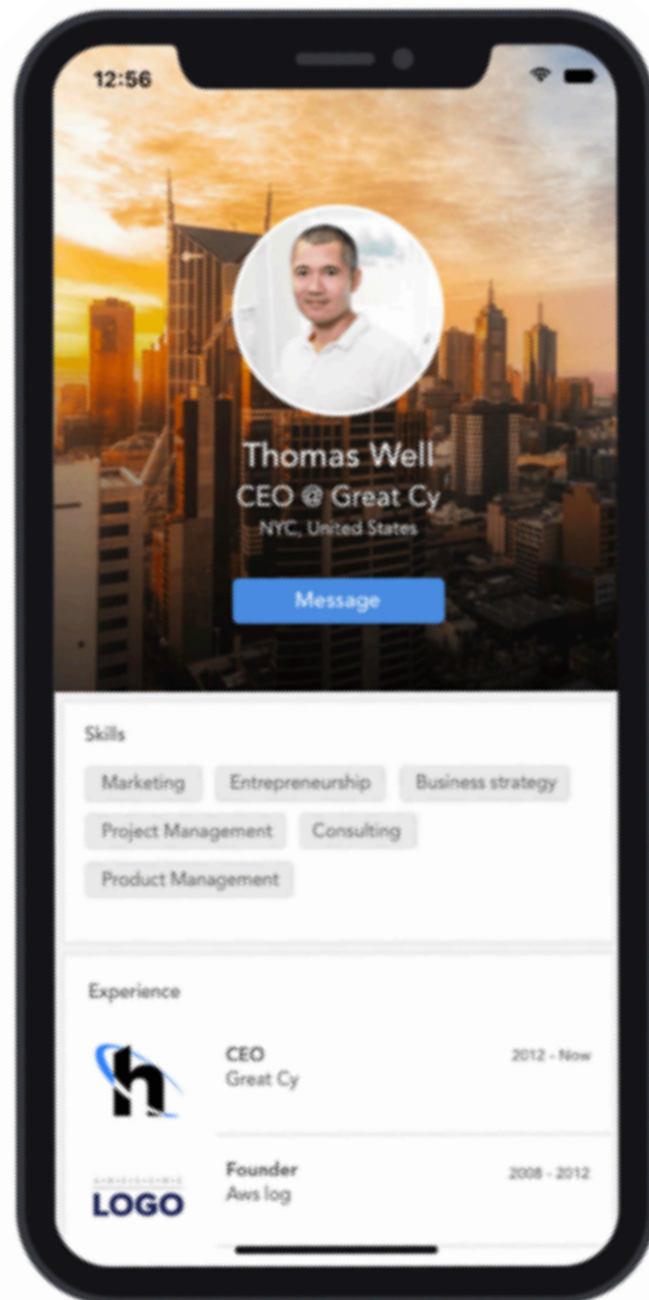
## Next Level ICMA Engagement

- Communities are often made of many smaller communities. With groups, ICMA members find and engage with other like-minded people in the community.
- Groups to match particular organizational model (clubs, chapters, industry groups, ...)
- Designation of members to lead, manage, or moderate established groups you (committee chairs, industry experts, etc.).



## Next Level ICMA Networking

- Got some free time ahead of you? Check-in where you are to let nearby members know where you are and to see if they can join you.
- Planning a trip? Let local members know you when you will be there and see who is available to meet.
- Communicate with other members through private messages.
- Tag people in your posts or comments to make sure they see them.



## Overall Cost

- \$17,000/year with a \$7,000 one time installation cost.
- Substantially more cost-conscious than developing an app from scratch (over \$100,000 estimated).
- Gradual roll-out with new features being released in a responsible and scheduled manner.
- Gamification ready.