



Open Analytics

Edmonton Crime Analytics

For the past five years, the City's number one request from data seekers has been the release of crime data. Now, for the first time in Edmonton's history, this data is open and available for public consumption. City of Edmonton have collaborated with the Edmonton Police Service to host their crime data on the City's [Open Data Portal](#). Using open data, the ACE Team has created interactive visualizations to illustrate and help you explore this data.

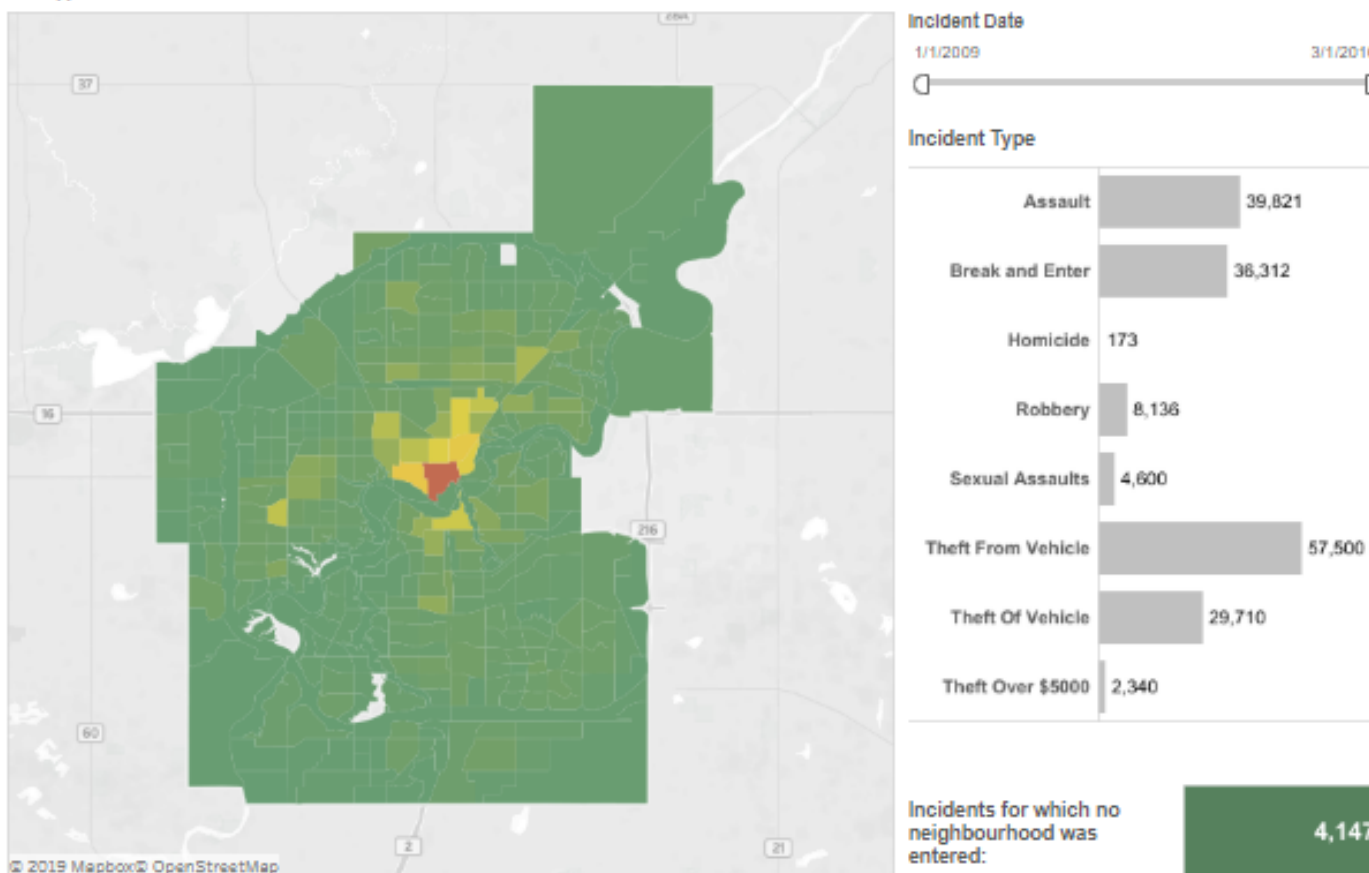
Click on a viz below!

 <p>Explore Edmonton's Crime Data</p>	 <p>Crime Data Trends and Forecasting</p>	 <p>Are They Related?</p>
 <p>Crime Data Sankey Diagram</p>	 <p>Crime vs Average Assessed Value</p>	 <p>Crime vs Police per Capita</p>

Explore Edmonton's Crime Incident Data

<
Neighbourhood: Total Number of Incidents
Neighbourhood: Incidents per Resident
Ward: Total Number of Incidents
>

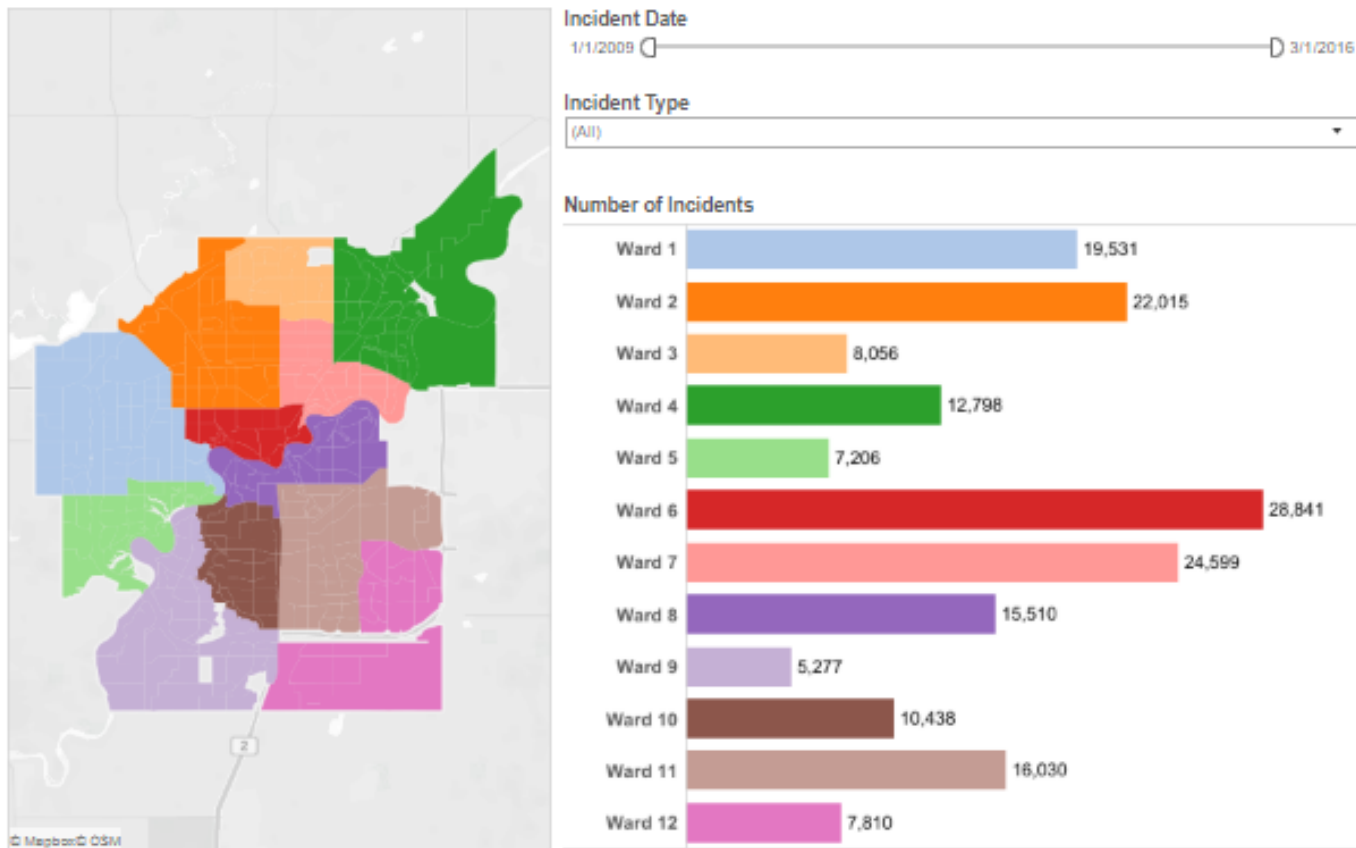
Neighbourhood: Total Number of Incidents



Explore Edmonton's Crime Incident Data

< Neighbourhood: Total Number of Incidents Neighbourhood: Incidents per Resident Ward: Total Number of Incidents >

Ward: Total Number of Incidents





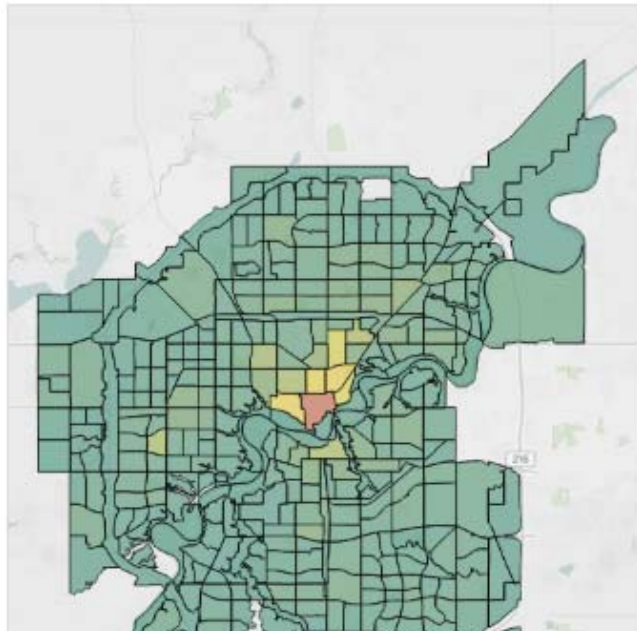
Open Analytics Map

Edmonton's [Open Data Portal](#) houses a huge variety of location-based data; We've taken it all and mashed it up into the Open Analytics Map! Explore everything from census data to the number of schools, parks, and stormwater lakes in this interactive visualization.

Each item you select is given an equal weighting to calculate an overall score for each neighbourhood. Want to see which Edmonton neighbourhood has the most schools AND libraries? Check off both items and the combined score will be displayed on the map.

Open Analytics Map

Open Analytics Map
 Data Layer Legend
 Business Use Case
 Citizen Use Case



Choose one or more categories below to display their associated data layers. Each layer can be turned on or off. All active layers are combined to calculate an overall score for each neighbourhood.

Categories

- (All)
- 2014 Municipal Census
- City Administration
- Community Centres
- Community Services
- Crime Incidents
- Drainage
- Emergency Services
- Environmental Services
- Facilities and Structures
- Indoor Recreation
- Outdoor Recreation
- Sustainable Development
- Transportation

Data Layers

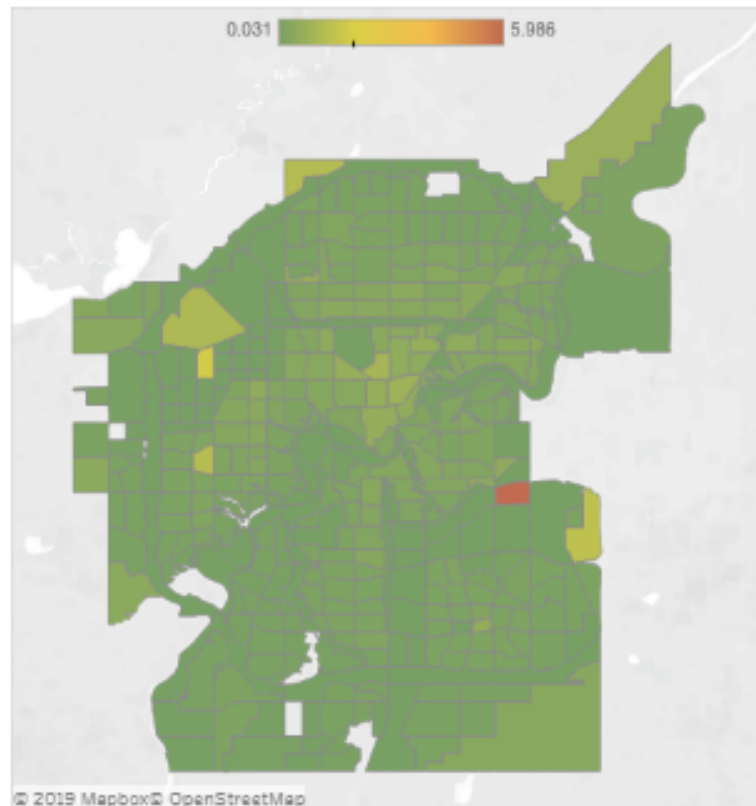
- (All)
- Assault
- Break and Enter
- Homicide
- Robbery
- Sexual Assaults
- Theft From Vehicle
- Theft Of Vehicle

Assessed Value and Crimes per Population (2009-2016)

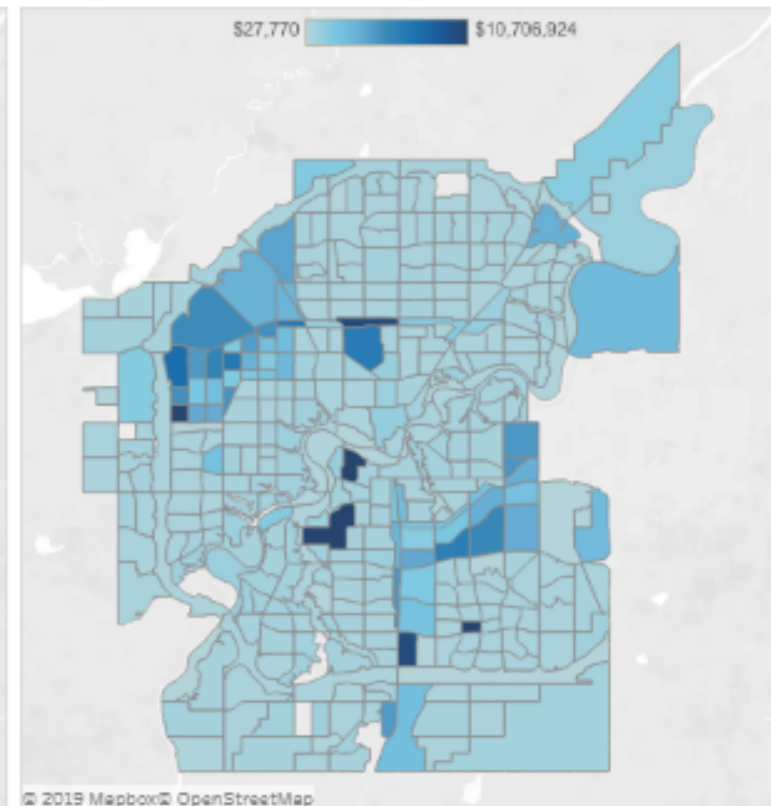
The ACE Team used correlation to determine if there is a relationship between the seven EPS crime per person included in the August 18, 2016 open data release and the average assessed value of buildings in Edmonton by neighbourhood. The correlation analysis found there is a moderate relationship between crime per person and average assessed value of buildings per neighbourhood ($R=.47$). Note that the existence of a relationship does not prove causation.

Neighbor...

Incidents Per Population (2009-2016)



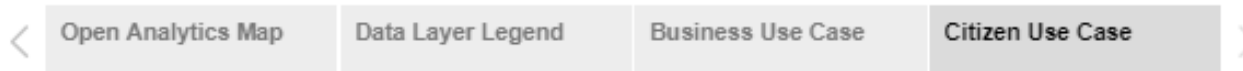
Average Assessed Value Per Neighbourhood



Edmonton's [Open Data Portal](#) houses a huge variety of location-based data; We've taken it all and mashed it up into the Open Analytics Map! Explore everything from census data to the number of schools, parks, and stormwater lakes in this interactive visualization.

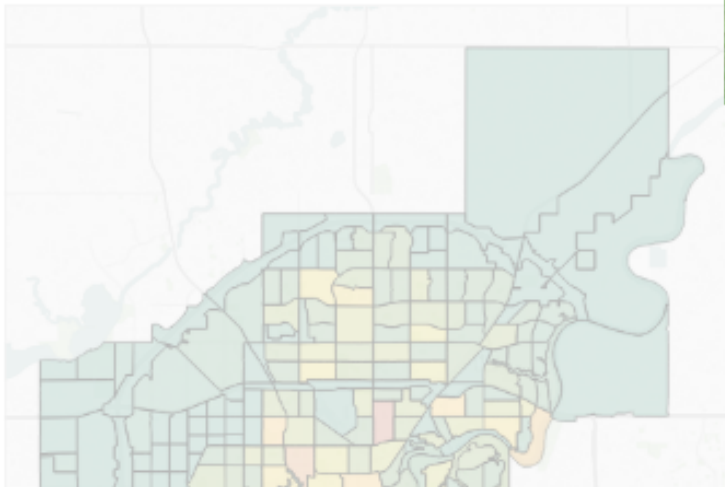
Each item you select is given an equal weighting to calculate an overall score for each neighbourhood. Want to see which Edmonton neighbourhood has the most schools AND libraries? Check off both items and the combined score will be displayed on the map.

Open Analytics Map



Citizen Use Case: Smith Family

The Smith family is house-hunting and wants to find a neighbourhood with a high concentration of family-friendly amenities. They use the Open Analytics Map to check which neighbourhoods have the highest combined concentration of libraries, playgrounds, and public schools.



- Categories
- (All)
 - 2014 Municipal Census
 - City Administration
 - Community Centres
 - Community Services
 - Drainage
 - Emergency Services
 - Environmental Services
 - Facilities and Structures
 - Indoor Recreation
 - Outdoor Recreation
 - Sustainable Development
 - Transportation