



BUILDING INNOVATIVE PARTNERSHIPS WITH LONG-TERM CARE RESIDENCES

MAIMOONA BAH-DUCKENFIELD, LCSW
ARLINGTON AGENCY ON AGING

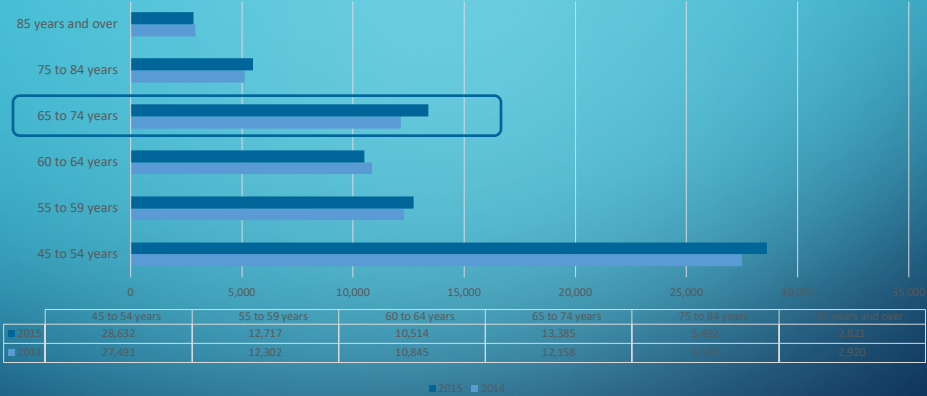


MISSION

- *Maintain maximum independence and dignity of older persons with appropriate supportive services; Remove individual and social barriers to economic and personal independence and; Provide a continuum of care.”*

AAA TRENDS AND RESEARCH

Arlington County 60+ Population



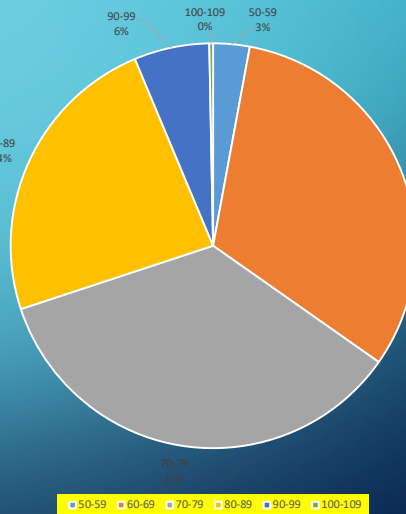
More than 31,000 Arlington residents, or roughly 14% of the population are ages 60 and over. The most significant increase occurred for adults' ages 65 to 74 years of age; which has consistently increased since 2010.

AAA DEMOGRAPHICS

FY 2017

- Served 2,105 (Area Plan programs)
- Average Age = 74
- Majority Female (65%)
- Home Environment
 - Majority live alone (48%)
 - 94% Live in a Private Residence

AAA Program Participants Age Ranges



OUR PHILOSOPHY

BUILD STRONG PARTNERSHIPS

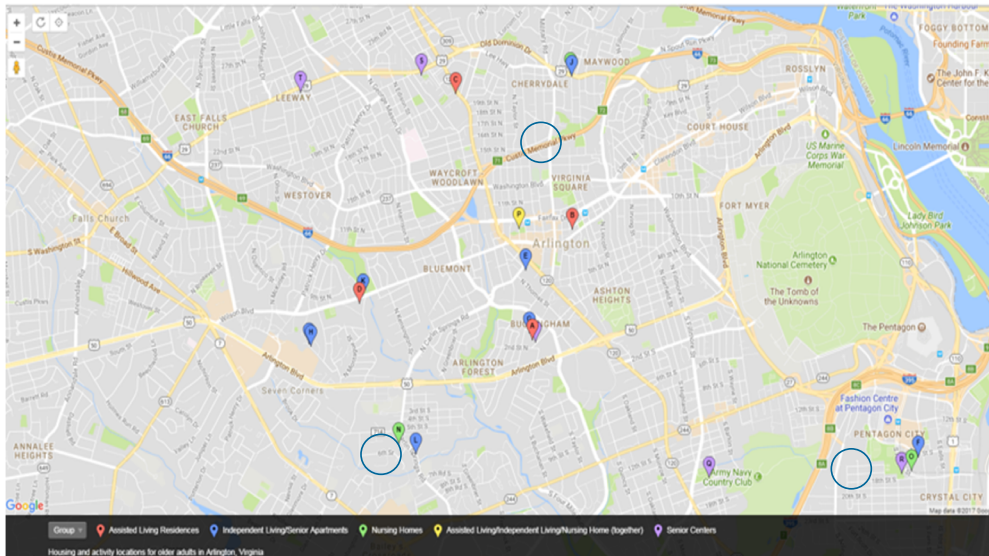
ENGAGE AND CONNECT

INTEGRATE SERVICE DELIVERY

SUPPORT CONTINUUM OF CARE



Long-Term Care Communities





AAA Outreach and Engagement

Partnerships with Long-Term Care Communities

Long-Term Care	Name	Address	Number of Beds (AL)	Number of Apartments (IL)	Number of Beds (NH)
Assisted Living	Brookdale Arlington	3821 Wilson Blvd., Arlington, VA, 22203	143	0	0
	Culpepper Garden Assisted Living	4439 N. Pershing Dr., Arlington, VA, 22203	73	0	0
	Sunrise at Bluemont Park, The James	5920 Wilson Blvd., Arlington, VA, 22205	50	0	0
	Sunrise of Arlington	2000 North Glebe Rd., Arlington, VA, 22207	50	0	0
	Mary Marshall Assisted Living Residence	2000 S. 5th St., Arlington, VA, 22204	52	0	0
Independent Living	Carlin, The	4300 N. Carlin Springs Rd., Arlington, VA, 22203	0	162	0
	Claridge House	1500 S. Fern St., Arlington, VA, 22202	0	300	0
	Culpepper Garden	4435 N. Pershing Dr., Arlington, VA, 22203	0	272	0
	Hunter's Park	2021 N. Nelson St., Arlington, VA, 22207	0	74	0
	Sunrise at Bluemont Park, The Potomac	5900 Wilson Blvd., Arlington, VA, 22205	0	57	0
	Sunrise at Bluemont Park, The Shenandoah	5910 Wilson Blvd., Arlington, VA, 22205	0	71	0
	Woodland Hill	610 S. Carlin Springs Rd., Arlington, VA, 22204	0	235	0
Multi-Level of Care	Jefferson, The	900 N. Taylor St., Arlington, VA, 22203	75	325	31
Nursing Homes	Cherrydale Health and Rehabilitation Center	3710 Lee Hwy., Arlington, VA, 22207	0	0	240
	Manor Care Health Services	550 S. Carlin Springs Rd., VA, 22204	0	0	161
	Regency Care of Arlington	1785 S. Hayes St., Arlington, VA, 22202	0	0	240

BUILD STRONG PARTNERSHIPS

- A SEAT AT THE TABLE
- CONSISTENT COMMUNICATION
- EXCHANGE BEST PRACTICES
- INVITATION FOR TRAININGS AND SPECIAL EVENTS
- LINKAGES WITH COMMUNITY PARTNERS

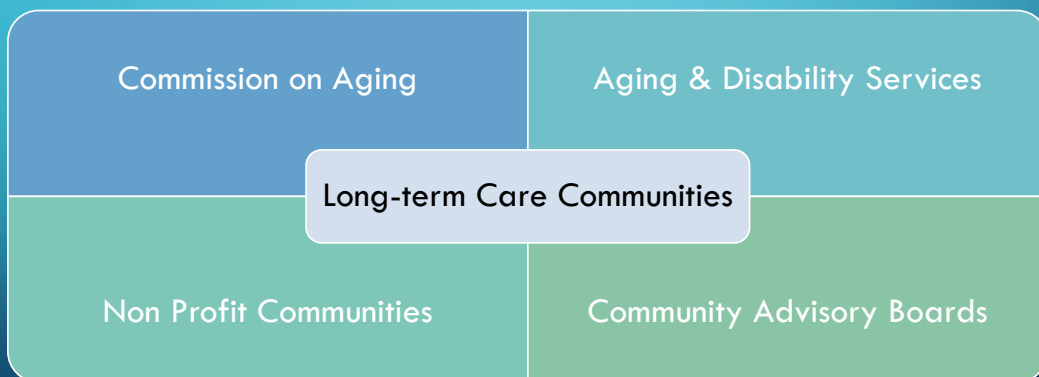


ENGAGE AND CONNECT

- CARE COORDINATION MEETINGS
- EMAIL BLASTS
- KEY CONTACT DIRECTORY
- ROUNDTABLE EXCHANGES
- WELCOME PACKET



INTEGRATE SERVICE DELIVERY





OUTCOMES

- ENHANCES OUTREACH OPPORTUNITIES
- ENRICHES KNOWLEDGE OF COUNTY SERVICES
- IDENTIFIES NEEDS, GAPS, TRENDS MORE EASILY
- OPENS LINES OF COMMUNICATION
- PROVIDES TRANSPARENCY
- REDUCES FRAGMENTATION OF SERVICE DELIVERY
- STRENGTHENS PARTNERSHIPS

