

METRO light rail

METRO is the nonprofit public corporation governed by the cities of Phoenix, Tempe, Mesa, Glendale, Peoria, Chandler and Scottsdale to plan, build and operate the Valley's high-capacity transit service. In addition to the 20-mile starter line, METRO will oversee the construction and operation of six extension lines that will bring the overall system length to 57 miles. The total cost of the starter project is \$1.4 billion.

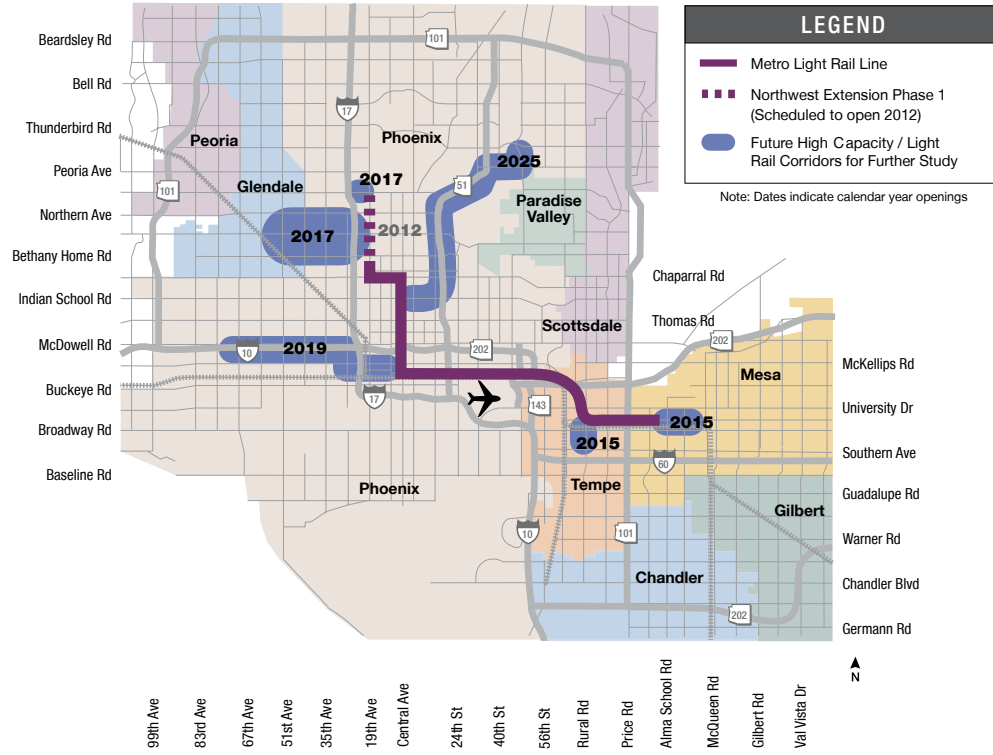
Starter line

- 26,000 boardings per day
- Travels at posted speed limits
- It takes approximately one hour to travel the system end-to-end
- Operates 20 hours per day, seven days a week
- Frequency is every 10 minutes on weekdays, every 15 minutes on weekends and every 20 minutes during early morning and late evening hours

Future transit corridors

The Maricopa Association of Governments' Regional Transportation Plan calls for 37 additional miles of light rail/high capacity transit corridors beyond METRO's 20-mile starter line. These 57-miles of transit improvements are scheduled for completion by 2026. They will be financed through a half-cent sales tax extension approved by voters in 2004.

A five-mile light rail extension to northwest Phoenix is entering the construction phase in 2009, and high-capacity transit studies are underway for a 2.7-mile transit corridor extension into downtown Mesa; a two-mile corridor extension into south Tempe; and an 11-mile extension into West Phoenix. Other transit corridor study areas include five miles in Glendale and 12-miles into northeast Phoenix.



MetroLightRail.org | Info@MetroLightRail.org | (602) 254-RAIL

Light Rail Economic Development Highlights



To receive this information in alternative formats call (602) 254-7245 / TTY (602) 322-4499.

Para recibir esta información en formatos alternativos favor de llamar al 602-254-7245/TTY 602-322-4499.



2. 19th Avenue/Camelback



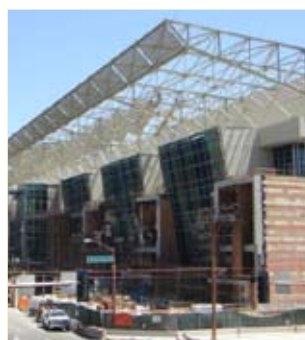
Project	Escala on Camelback
Location	17th Ave. & Camelback Rd. (SWC)
Type of Project	Mixed Use / Multi-Family Residential
SF / # Units	15,000 SF retail / 160 residential units
Completion	Fall 2010
Description	Mixed-use development adjacent to the 19th Ave. and Camelback LRT station. 15,000 SF commercial space and 160 ownership condominium units.

9. Encanto/Central Avenue



Project	Tapestry on Central
Location	42 W. Encanto Blvd.
Type of Project	High-Rise Residential
SF / # Units	280 residential units
Completion	Spring 2007
Description	This three-building, seven-story, 280-unit community with a variety of one- and two-bedroom floor plans, ranging from approximately 837 square feet to more than 2,500 square feet.

14. 3rd Street/Washington and 3rd Street/Jefferson



Project	Phoenix Convention Center
Location	111 N. 3rd St.
Type of Project	Convention Center
SF / # Units	900,000 SF convention space
Completion	Winter 2008
Description	The downtown plaza and convention center recently completed a \$600 million expansion to expand the existing convention center adding 1.7 million square feet of new space. With the expansion, the facility can now accommodate 375,000 convention delegates.

18. 44th Street/Washington



Project	4600 East Washington
Location	4600 E. Washington
Type of Project	Office
SF / # Units	186,000SF
Completion	Fall 2008
Description	A new six-story Class A office building at the northwest corner of 46th and Washington streets in Phoenix. The property is a mixed-use development alongside the Starwood Hotel, Trillium Apartments, and future retail development.

25. McClintock/Apache Boulevard



Project	Grigio Metro
Location	Apache Blvd / McClintock Drive (SEC)
Type of Project	Mixed Use / Multi-Family Residential
SF / # Units	16,000 SF retail / 408 residential units
Completion	Fall 2009
Description	Grigio is a mixed-use project consisting of approximately 408 high-end multifamily residential apartment homes, approximately 16,000 square feet of specialty retail space and a parking structure containing approximately 956 spaces including 300 designated to the LRT system. Grigio will have a mix of one, two and three bedroom apartment homes.



The cities of Phoenix, Tempe and Mesa have taken action to encourage development near the METRO light rail route. There has been a substantial increase in development activity since 2001.



Total Development Along Light Rail (Phoenix, Mesa, Tempe) Recently Completed Under Construction and Planned Projects 2001–Present	
Number of Projects	180
Capitol Investment - Private	\$ 5,863,540,713
Capitol Investment - Public	\$ 1,523,550,000
Total investment	\$ 7,387,090,713
SF Commercial	9,205,465
SF Government	148,194
SF Education	671,986
SF Residential	10,511,080
# Residential Units	17,886
# Hotel Rooms	3,260