

Broadband and Its Local Government Impacts

William Beith
ICMA Conference Presenter

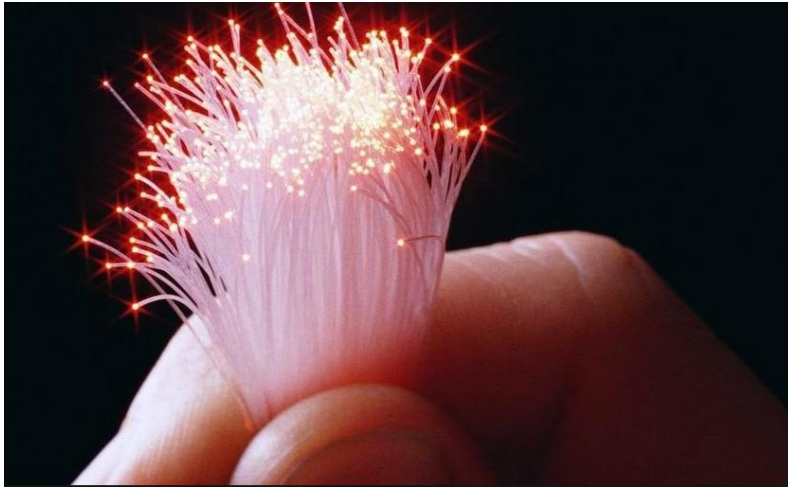


ICMA 2016 | SEPT 25-28
KANSAS CITY
102nd ANNUAL CONFERENCE



What Exactly is Broadband?

- ▶ Delivery Of Content To An Address Has Changed Since “Cable TV”
- ▶ Dial Up Internet
- ▶ Technology Merged Separate Information Streams
- ▶ Triple Play
- ▶ Streaming & Video On Demand



How Did This Begin in Gilberts?

- ▶ Economic Development Committee Survey
- ▶ Market Competition & ROI
- ▶ Under Served Due to Location & Density



Presence Of Broadband

What Does It Mean

- ▶ Economic Development
- ▶ Increased Home Value \$100sf to \$130sf
- ▶ Becoming A Basic Utility



Introduction of Broadband

- ▶ Network Gilberts As A Development Tool
- ▶ Introduction of Backbone
- ▶ Referendum

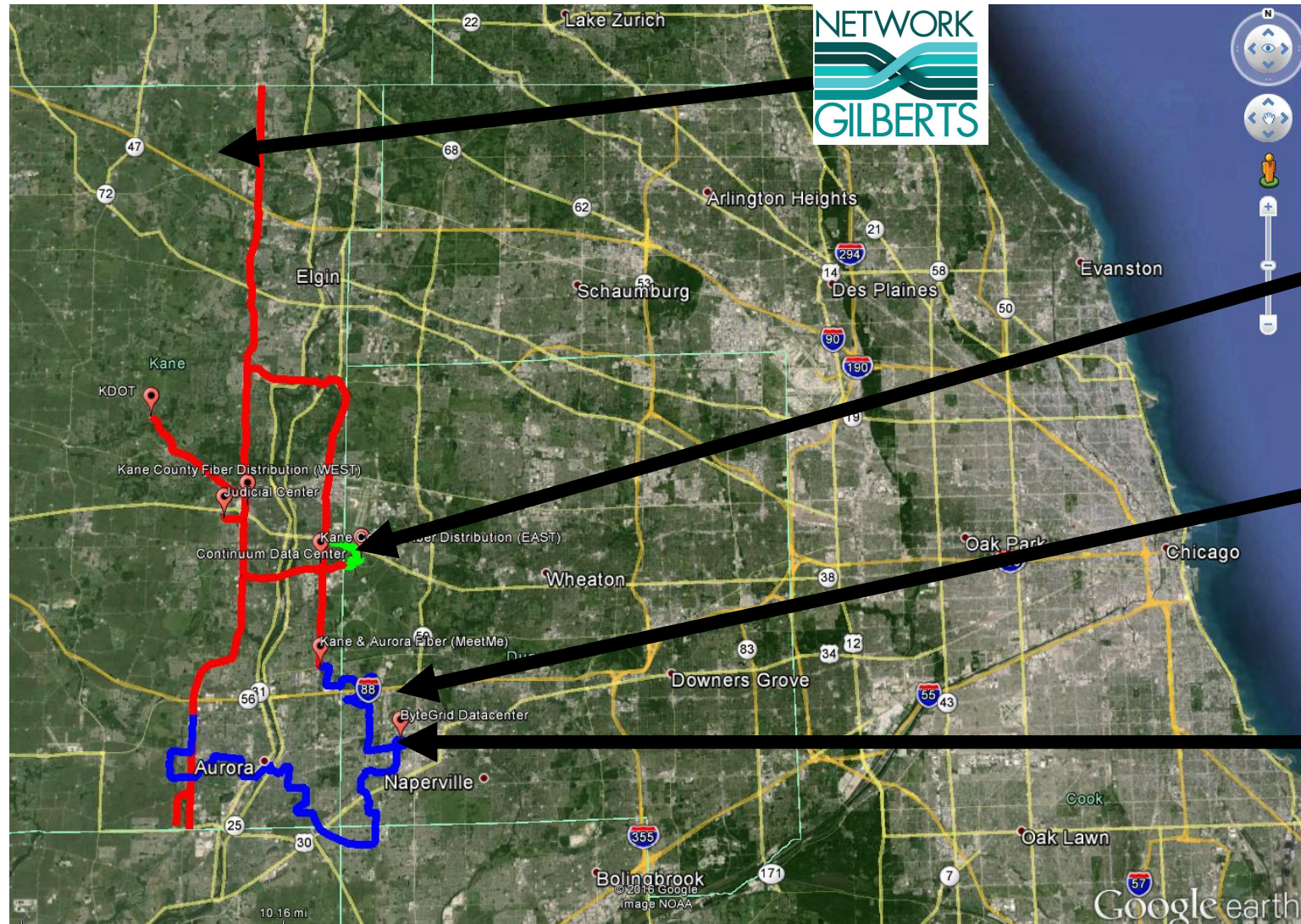
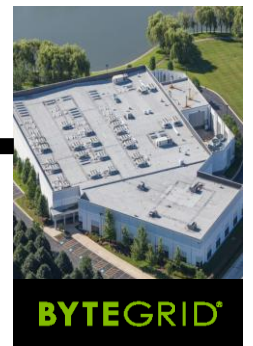




Public Private Partnership

- ▶ Fosiva
- ▶ Northern Illinois University
- ▶ Fosiva
- ▶ Kane County
- ▶ Intergovernmental Agreements
- ▶ Redundant Paths

Kane Fiber Optic Network Map





Partnership Benefits

- ▶Lowers Costs
- ▶Improves Performance
- ▶Improves Services
- ▶Commercial & Residential Opportunities
- ▶Establishes Kane County as a Marketplace
- ▶Competitive Advantage



Internet Service Example

- School District shopping for Internet Service Provider
 - New state testing requirements driving demands
 - Needs to double current 500 Mb bandwidth
 - Current rates are \$9.15 per Mb for 500 Mb service
 - \$4,575 per month and \$54,900 per year
- Proposals for 1000 Mb service from Kane Partner
 - \$2,000 per month and \$24,000 per year
 - Double the Service at half the cost



Municipal Advantages

- ▶ Co-Location
- ▶ Data Backup
- ▶ Municipal Efficiencies
 - VOIP
 - SCADA
 - GIS
 - Software Integration (Finance)

Final Thoughts



Broadband Is A Blank Canvas

Questions/Comments?

Additional Information

William Beith@Villageofgilberts.com



ICMA 2016 | SEPT 25-28

KANSAS CITY

102nd ANNUAL CONFERENCE

