



MOBILE WORKSHOP PROPOSALS

MARCH 2015

MW ID NUMBER: 0001 **PROPOSED TITLE:** GRAND CALUMET RIVER AND ROXANA MARSH RESTORATION AND ECONOMIC RENEWAL IN NORTHWEST INDIANA

This mobile (potentially nautical) workshop focuses on the more than 5 year-old, restoration of the Grand Calumet River and Roxana in Northwest Indiana. The highlight of the workshop would be a river-based boat trip through the various stages of the restoration along a 2.5 miles stretch of the river in Hammond and East Chicago, Indiana. Under the Great Lakes Legacy Act, the U.S. EPA Great Lakes National Program Office (GLNPO) and its non-federal partners funded this project in one of the most industrialized areas in the country as well as home to some of the most diverse native plant and animal communities in the Great Lakes Basin.



Because the project is still underway, attendees would be able to observe the earliest stages of the habitat restoration: restoring riverbanks and bottom substrate with native plants. As importantly, attendees would also be able to tour several mature restoration areas where not only has contaminated sediment been dredged from the marsh but native plants have been planted and cultivated to eradicate and prevent the return of Phragmites.

The objective of the workshop is to demonstrate the direct impact of this large-scale wetland habitat restoration on the economic fortunes of this once heavily-industrialized landscape. To date, the cleanup of the Grand Calumet River has addressed over 700,000 cubic yards of contaminated sediment.

The Grand Calumet River and Roxana Marsh projects will serve as anchors to community revitalization activities in the region, in particular, the East Chicago Lakefront Revitalization Initiative.

SUGGESTED PRESENTERS

- East Chicago Lakefront Revitalization Initiative – Marino Solorio, City of East Chicago
- Grand Calumet River and Roxanna Marsh Habitat Restoration: Diana Mally, GLNPO; Jack Brunner, Tetra Tech
- Northwest Indiana Regional Planning Commission – Kathy Luther

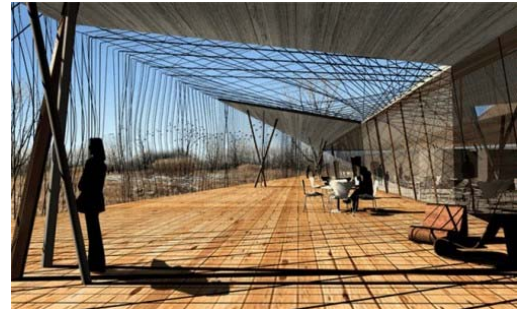
CONTACT: Mindy Gould, Tetra Tech, mindy.gould@tetrattech.com

Expected Format: Bus tour with significant all-terrain walking expected. Possible boat tour.

Expected Duration: Several hours, including bus ride and tour.

MW ID NUMBER: 0002 PROPOSED TITLE: CALUMET REGION (ILLINOIS) – ECOLOGICAL REVITALIZATION OF CONTAMINATED MUNICIPAL PROPERTIES TO CREATE COMMUNITY ASSETS FOR PUBLIC EDUCATION AND RECREATION

This mobile workshop will present a set of successful brownfield redevelopment projects in the Calumet Region of Illinois. The theme will revolve around the restoration of contaminated municipal properties for creating community assets of recreation space and environmental education. The four properties that would be included in the workshop could include:



1. Hegewisch Marsh/Ford Calumet Environmental Center
2. Big Marsh (BMX Bike Park)
3. Indian Ridge Marsh
4. Van Vlissingen Marsh

The workshop will present how the principles in EPA’s “Eco Tools: Tools for Ecological Land Reuse” were applied to result in conversion of these contaminated properties to highly valued community assets. The process used for the design competition for the Ford Calumet Environmental Center can be discussed to inform attendees such as government/community representatives and potential developers as they consider similar methods for their sites. Ecological specialists can explain lessons learned at the projects, including design considerations for managing and treating waste on site, protecting on-site fauna and reusing indigenous materials wherever possible. Because these properties are controlled by the Chicago Park District (CPD), administrative and logistic challenges can also be addressed by CPD representatives. Local community representatives can also explain how the restorations have impacted their residents, property values and future development opportunities.



SUGGESTED PRESENTERS

- City of Chicago Park District – Xhanna Yermakov
- Ford Calumet Environmental Center – The Lakota Group
- Big Marsh Bike Park – Hitchcock Design Group, Joel Baldin
- Ecological Restoration/Construction – Dan Cooper, CPD

CONTACT: Mindy Gould, Tetra Tech, mindy.gould@tetrattech.com

Expected Format: Bus tour with significant all-terrain walking expected.

Expected Duration: Approx 3 hours, including bus ride and tour.

DESCRIPTION

City leadership has recognized the importance of manufacturing in the Calumet Region, and with the area being a major US transportation hub, how the Region has contributed to Chicago's prosperity for over a century. Currently, there are hundreds of acres in the Region suitable for industrial redevelopment. After an era of decline, there has been focus in the last two decades to revitalize the Calumet area, and there are many successes (industrial, educational, retail, & social) to highlight in an Educational Session or Mobile Workshop.



Potential projects to feature include:

- The Ray & Joan Kroc Corps Community Center (RJKCCC), a multi-use family recreation and cultural facility, was developed on a 32-acre remediated brownfield site in a partnership between The Salvation Army and the City of Chicago
- Pullman Park is a 180-acre mixed use former brownfield site located at 111th and the Bishop Ford. The redevelopment is revitalizing the Pullman community and includes:
 - o Method, a pioneer of eco-friendly cleaning products, built a new 150,000 ft² manufacturing facility on a 22 acre site. It is pursuing LEED platinum certification, and features solar panels and a wind turbine. Method is partnering with Gotham Greens to install a 75,000 ft² greenhouse that will be the world's largest rooftop garden.
 - o Retail development, anchored by a 150,000 ft², full service Walmart that includes groceries, pharmacy, garden center and general merchandise, continues at the site. The Walmart includes a green roof system and skylights that allow for daylight harvesting.
- A. Finkl & Sons constructed a new \$170M state of the art specialty steel alloy manufacturing facility on the former 44-acre Verson brownfield site on 93rd Street.
- Asphalt Operating Services (AOS) completed construction of a new \$60M liquid asphalt facility on a portion of the remediated former Wisconsin Steel Works brownfield site.
- The award-winning Harborside International Golf Center was developed on a 225-acre municipal solid waste / incinerator ash / wastewater sludge / construction debris landfill.

- An “eco-recreation” BMX Bike Park is currently under construction at Big Marsh, a slag-degraded natural area. The brownfield development is visioned as “a playground for cycling”.
- In the Pullman area, Comcast Cable installed the largest (2-acre) pervious concrete parking lot in the Chicago area, so “when it rains, it drains”.
- Two other Calumet Region projects “in the making” are the Chicago Lakeside Development (on the 600-acre former US Steel South Works brownfield site) and the Ford Calumet Environmental Center.

SUGGESTED POINTS OF CONTACT

- Dennis Kasner, AECOM, dennis.kasner@aecom.com
- David Holmberg, Calumet Area Industrial Commission, dholmberg@calumetareaindustrial.com

SUGGESTED PRESENTERS

- David Doig / Angie Marks, Chicago Neighborhood Initiatives
- Representatives from The Salvation Army/URS
- Representatives from the City of Chicago
- Plant Manager from Method / A. Finkl & Sons
- Representative from the Calumet Area Industrial Commission (CAIC)

CONTACT: Dennis Kasner, AECOM, dennis.kasner@aecom.com

Expected Format: Bus tour with significant walking expected.

Expected Duration: Approx 3 hours, including bus ride and tour.

MW ID NUMBER: 0004 PROPOSED TITLE: BROWNFIELDS IN NORTHWEST INDIANA: SUCCESSES AND CHALLENGES

DESCRIPTION

Northwest Indiana is in many ways an extension of the Chicago Suburbs, hailing from the same metropolitan statistical area and sharing many demographic and economic characteristics of Chicago.

One thing that is unique about Northwest Indiana is the intermingling of extremely active heavy industry sites, vacant brown and gray field parcels, and pockets of astounding ecological biodiversity. Successful remediation and redevelopment must account for the needs of the adjacent industrial activities as well as protection of globally rare and significant dune and swale ecosystems, endangered species, and environmental justice populations.



This mobile workshop would start at the Internationally recognized Lost Marsh Club House in Hammond. The 2001 Lost Marsh project is a golf course built on the brownfield remediation of Bairstow Slag Mountain. The Club House also presents a great view of surrounding neighborhoods and the BP Oil Refinery just a 25 minute drive from the Conference Site.

The workshop could then proceed 10 minutes south east to the "work in progress" East Chicago Waterfront Revitalization Project. This project includes significant restructuring of a lakefront beach surrounded by industry. The former city drinking water plant is one brownfield site to be redeveloped in this regionally significant project.

Straight South from there an excellent stop would be at Roxanna Marsh. This site has recently seen millions of dollars of Great Lakes Legacy Act funding invested in dredging and capping of tons of toxic sediment, followed by ecological restoration. The Roxanna Marsh is now part of the heart of redevelopment planning for this transit accessible neighborhood in East Chicago.

The workshop could also include a visit to the Gary Airport, which includes significant numbers of brownfield remediation and Superfund sites, some of which has become natural area restoration projects. The Airport area includes the Gary Jet Center's LEED certified hangar. In addition, short visits to the near by IDNR and/or Nature Conservancy Dune and Swale nature preserves might be arranged.

The trip could then proceed east through Downtown Gary to see the greenspace where the demolished -30 year vacant Sheraton Hotel recently stood, a project funded with Brownfield RLF funding. (6 minutes drive by spot maybe?) From here the tour could proceed to the Miller Beach Art District on Lake Street in the Miller neighborhood of Gary, which includes galleries, restaurants, and the renowned 18th Street Brewery.

Any Northwest Indiana Tour would be incomplete without a stop at the Indiana Dunes. There are several options here, depending on time availability. From the Miller neighborhood, it is few short blocks to the Paul Douglas Environmental Education Center and a visit to Miller Woods. If time permits, another 15 minute drive east, could take the tour to the Indiana Dunes/Portage Lakefront Walk, a new National Lakeshore facility converted from a former steel mill wastewater plant. The facility is owned by the National Park Service but operated by the City of Portage.



SUPPLEMENTAL:

<http://www.lostmarshgolf.com/clubhouse/>
http://www.chicagowilderness.org/CW_Archives/issues/spring2009/calumetinsert.html
http://articles.chicagotribune.com/2001-09-02/business/0109060380_1_first-tee-slag-solid-waste
<http://www.sehinc.com/portfolio/waterfront-revitalization-initiative-east-chicago-ill>
http://www.nwitimes.com/news/local/lake/east-chicago/officials-celebrate-end-to-roxana-marsh-dredging-project/article_41d296c8-2292-5c0e-872a-d80cd415416b.html
<http://www.prnewswire.com/news-releases/first-leed-certified-building-in-gary-indiana-awarded-to-gary-jet-center-264799991.html>
http://www.iisgcp.org/newsroom/helm/helm_summer12_final.pdf
http://www.nytimes.com/2014/04/01/us/in-gary-ind-a-gateway-has-become-the-eyesore.html?_r=0
<http://handlensandbinoculars.blogspot.com/2010/08/pine-station-and-clark-and-pine-nature.html>
<http://www.millerbeacharts.org/>
<https://www.facebook.com/18thStreetBrewery>
<http://www.nps.gov/indu/planyourvisit/deec.htm>
<http://www.nps.gov/indu/planyourvisit/portage-lakefront-and-riverwalk.htm>

SUGGESTED POINTS OF CONTACT

- Overall: Kathy Luther, NIRPC, kluther@nirpc.org 219.763.6060 x 127
- Hammond Lost Marsh: Milan Kruszynski, kruszynskim@hammondmarina.com 219.659.7678
- East Chicago Waterfront Revitalization: Milton Reed, Mreed@globalconsultingsln.com, 219.808.2175
- City of Gary: Brenda Scott-Henry, bhenry@ci.gary.in.us, 219.882.3000

SUGGESTED PRESENTERS

- Lost Marsh: Milan Krusinski (see above),
- East Chicago Waterfront: Mayor Copeland, or Gregg Calpino, SEH East Chicago Roxanna Marsh: Ashley Schneider, IDEM
- Gary Airport: looking into presenter
- Clark and Pine Nature Preserve: Emily Stork, IDNR
- Gary Downtown (Sheraton Demolition) - Mayor Freeman Wilson or Brenda Scott Henry
- Miller Beach Art District looking into whether Karen Lee or Eric Reeves would be good.
- National Lakeshore has many really good interpretive speakers that could be approached depending on where there is time to visit.

CONTACT: Kathy Luther, NIRPC, kluther@nirpc.org 219.763.6060 x 127

Expected Format: Bus tour with significant walking expected.

Expected Duration: Several hours including bus ride and tour.

MW ID NUMBER: 0005 PROPOSED TITLE: NORTH BRANCH INDUSTRIAL CORRIDOR WALKING TOUR

The North Branch Industrial Corridor in Chicago is home to traditional heavy manufacturers as well as new technology based businesses and is surrounded by retail stores and residential neighborhoods with large young and professional populations. Chicago, like many cities, has struggled to retain land for industry and economic development in areas facing gentrification. The City and North Branch Works worked together over 25 years ago to create Planned Manufacturing Districts (PMD's) in this area.



The PMD is a zoning overlay district that is designed to retain industrial uses. The North Branch PMD's have been quite successful and employment has increased from a low of 7,000 in the late 1980's to almost 10,000 today. The Corridor has been gaining in new technology based businesses such as CH Robinson with 1000 logistics jobs, the Wrigley Corporation's research facility and the new UI Labs, a digital manufacturing lab that recently received \$350 million in federal funding. The Corridor also retains a solid core of traditional heavy manufacturers ranging from scrap recyclers to metal refiners to laboratory equipment manufacturers to food processors. Many of these traditional companies use advanced manufacturing processes.

North Branch Works, in collaboration with the Delta Institute, received an Areawide Planning Grant from the US EPA in 2013 to create a redevelopment plan for a 40 acre brownfield site in the Corridor that also addresses the needs of the surrounding communities. Transportation, congestion, river access, connectivity, job creation and resident employment figure prominently among the issues that impact all stakeholders and will interact with market forces to form the basis of the redevelopment plan.



The take aways from the session:

- An understanding of the complex interests underlying industrial redevelopment of brownfield sites in high density urban areas with competing land uses, changing communities and a transitioning economic base.
- Suggested strategies for meeting diverse stakeholder interests.
- The importance of community and area-wide planning in the redevelopment process.
- How sustainability issues fit into industrial redevelopment.

SUPPLEMENTAL

Our project website is: <http://www.civcartworks.com/projects/north-branch-river-works>

Our organization website is: <http://northbranchworks.org/>

SUGGESTED POINTS OF CONTACT

Mike Holzer or Krista Kahle Elam

North Branch Works

1866 N. Marcey St. Chicago IL 60614

773-929-5552 (main) ext 225, Mike. ext 226, Krista mike@northbranchworks.org

krista@northbranchworks.org

SUGGESTED PRESENTERS

Mike Holzer or Krista Kahle Elam

North Branch Works

1866 N. Marcey St. Chicago IL 60614

773-929-5552 (main) ext 225, Mike. ext 226, Krista mike@northbranchworks.org

krista@northbranchworks.org

CONTACT: Krista Kahle Elam, krista@northbranchworks.org

Expected Format: Bus tour with significant walking expected.

Expected Duration: Approx. 3 hours including bus ride and tour.

MW ID NUMBER: 0006 PROPOSED TITLE: HARNESSING WASTE, GROWING THE FUTURE

Participants in this mobile workshop will learn how Green Era plans to transform organic waste into renewable energy, food, jobs and healthy neighborhoods. The workshop will visit two exciting examples of innovative reuses of vacant industrial land through a bus tour.



The first stop will be Growing Power’s Iron Street farm located in the Bridgeport neighborhood of Chicago. Growing Power is a nonprofit focused on community grown food, education and green community development. Situated on the South Branch of the Chicago River, this formerly vacant site is now a thriving 7- acre farm with seven hoop houses for year round production, vermicompost, mushroom production, an apiary and urban pygmy goats. Iron Street Farm is also one of only two composting facilities in Chicago, recycling over 450,000 lbs of “waste” each year. To learn more about Growing Power, visit: www.growingpower.org.

The second stop will be to Green Era’s future anaerobic digester (AD) site in South Chicago. Green Era is currently redeveloping this vacant brownfield property to build an AD facility. The project will divert organic waste from landfills to produce clean, renewable energy and nutrient-rich soil that is ideal for agricultural applications. The redevelopment of this vacant site will reduce transportation of organic waste and benefit the environment and communities existing in food deserts by supporting expansion of local food systems. Working with Growing Power, the project will have a direct partner for the AD-derived nutrient-rich materials. This workshop will highlight EPA’s commitment to green infrastructure investments and building a clean energy economy on current and formerly contaminated sites.



Join us to learn more about how Green Era plans to “close the loop” between organic waste, renewable energy, and local food production.

SUPPLEMENTAL

www.growingpower.org

SUGGESTED POINTS OF CONTACT

- Linda Yang, P.G., Terracon Consultants, Inc. cyang@terracon.com, 630-445-0159 (office); 630-327-6537(cell)

SUGGESTED PRESENTERS

- Jason Feldman, Green Era, jfeldman1@gmail.com
- Linda Yang, Terracon, cyang@terracon.com

CONTACT: • Linda Yang, Terracon, cyang@terracon.com

Expected Format: Bus tour with moderate walking expected.

Expected Duration: Approx. 2 hours including bus ride and tour.

**MW ID NUMBER: 0007 PROPOSED TITLE: AFTER THE COAL PLANT CLOSES:
STAKEHOLDER ENGAGEMENT AROUND THE FISK COAL PLANT**

Across the country, coal-fired power plants are being closed. While these closures represent a win for the environment, it's important to consider the full implications of plant closures on local communities and begin to engage stakeholders in the redevelopment process. Chicago's Fisk coal plant site offers a prime living example of how engaging diverse stakeholders can streamline the coal plant redevelopment process.



Tour participants will be taken on a tour of the perimeter of the former Fisk Coal Plant site in the Pilsen neighborhood of Chicago. In 2012, the Fisk coal plant was closed after years of local community organizing efforts led by the Pilsen Environmental Rights and Reform Organization (PERRO), the Pilsen Alliance, and other local community organizations. In anticipation of plant closures, Chicago Mayor Rahm Emanuel convened the Fisk and Crawford Reuse Task Force in early 2012 to collect community input and develop guiding principles for the reuse of both the Fisk and Crawford coal plant sites. The Task Force includes representation from community-based organizations, local aldermen, labor unions, City officials, and private sector utility companies, and over the past three years, Delta Institute has facilitated the Task Force consultation process.

Often coal plant site redevelopment can take well over a decade, but due in part to the comprehensive Task Force process, redevelopment planning on the Fisk site is already underway. NRG and the CTA have proposed that the 22-acre site be redeveloped into a Chicago Transit Authority (CTA) bus garage and maintenance facility that will include state-of-the-art clean energy systems, a green roof, a river walk for the community, and ample green space. Not only will this reuse of the site provide opportunities for local residents to live, work and play in a healthy environment, but it will bring much-needed employment opportunities as well. The development is expected to create a significant number of jobs during the demolition, cleanup and redevelopment phases, and it promises to bring 400 permanent CTA union jobs to Pilsen.



The tour will stop first at the Fisk plant for a tour of the perimeter of the site to discuss redevelopment activities, and it will then move to the Mexican Fine Arts Museum for a discussion regarding the Task Force process, redevelopment challenges, and anticipated benefits to local sustainability and livability. The tour will be led by Delta Institute and feature local speakers such as a representative from NRG. The tour will conclude with a meal of authentic Mexican fare at the Pilsen's Nuevo Leon restaurant.

SUPPLEMENTAL

<http://www.chicagotribune.com/business/ct-fisk-cta-0118-biz--20150118-story.html>

http://delta-institute.org/delta/wp-content/uploads/Fisk_Crawford_Reuse_Task_Force_Sept-2012.pdf

SUGGESTED POINTS OF CONTACT

- Margaret Renas, Delta Institute, mrenas@delta-institute.org, 312-651-4335

SUGGESTED PRESENTERS

- Margaret Renas, Delta Institute, mrenas@delta-institute.org, 312-651-4335

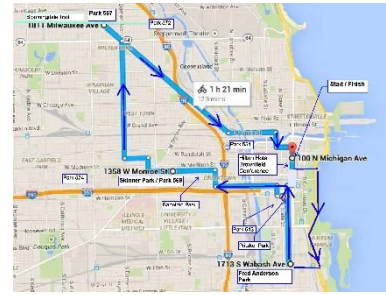
CONTACT: kmusisi@delta-institute.org

Expected Format: Bus tour with significant walking expected.

Expected Duration: Approx. 2 hours including a short bus ride and tour.

MW ID NUMBER: 0008 PROPOSED TITLE: BROWNFIELDS TO PARKS BIKE TOUR

The City of Chicago and Chicago Park District have actively sought opportunities to redevelop Brownfield and underutilized sites to increase residential access to nearby parks that will keep Chicago one of the world's best places to live, work, and play. Where large parcels are not available, small parks have been developed, in some cases on land impacted by previous industrial uses.



Key members of the City of Chicago, Chicago Park District, and Terracon Consultants will conduct a tour of three sites, Fred Anderson Park, Park 569 Dog Park, Park 567 all successfully redeveloped on small sites located in densely developed surroundings. All three sites were enrolled into IEPA's voluntary cleanup program, the SRP, and have achieved no further remediation (NFR) letters. Terracon and the City of Chicago guides will provide cleanup details.



It is proposed that the 2-3 hour workshop will be a bike tour and will navigate between sites on selected bike-friendly streets. Arrangements are underway to provide bicycles and helmets to all participants. Experienced Chicago bikers and local Brownfield practitioners will usher the way to deliver intimate tour of Chicago. The tour is proposed to start near Millennium Park, go east and then south along Chicago's iconic lakefront path and museum campus, pass Soldier Field and cross over the pedestrian pass to Fred Anderson Park, then through the City to Park 569 and then Park 567.

Many additional interesting Chicago points of interest and Brownfield sites and would be pointed out along the way. Time allowing, additional nearby SRP park sites, including West End Park 574, located at 2540-56 W Jackson Blvd, Bartelme Park, Pritzker Park, Park 543, or Park 551 could be added. Milwaukee/Leavitt Park

567 is a planned connection to the City's exciting new inter-urban Bloomingdale Trail (the 606), built on a former elevated rail line, which is opening in summer 2015. Participants can return to the loop with the tour along Milwaukee Avenue's bike path (~13 mile tour) or return with the Blue Line Subway (~9 mile tour).

SUPPLEMENTAL

http://www.terracon.com/services/environmental/#brownfields_and_site_redevelopm ent
http://www.cityofchicago.org/city/en/depts/dgs/provdrs/environmental_management. htm
<http://www.chicagoparkdistrict.com/parks/anderson-fred/>
<http://the606.org/map/>

SUGGESTED POINTS OF CONTACT

- Richard O'Brien, Terracon Consultants, rmobrien@terracon.com, 312.575.0014

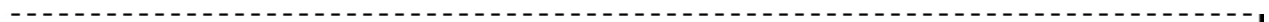
SUGGESTED PRESENTERS

- Richard O'Brien, Terracon Consultants, rmobrien@terracon.com, 312.575.0014
- Eamon Reilly, Chicago Department of Fleet and Facility Management, Reilly, Eamon, eamon.reilly@cityofchicago.org, 312-744-7205
- Dan Cooper, Chicago Park District, Daniel.Cooper@ChicagoParkDistrict.com (312) 742-4287

CONTACT: Richard O'Brien, Terracon Consultants, rmobrien@terracon.com, 312.575.0014

Expected Format: Bike Tour with waiver requirement.

Expected Duration: Approx. 2-3 hours



MW ID NUMBER: 0009 PROPOSED TITLE: RECLAIMING THE RIVERFRONT IN AURORA – RIVEREDGE PARK

Take the train to come see how brownfield redevelopment is done in the second largest city in the State of Illinois – with music! In 2006 the City of Aurora and its citizens embarked on an aggressive plan to reclaim the once heavy industrial shores of the Fox River as a public gathering place. The first phase of the project has been constructed and this workshop will take you on a walking tour and back stage pass to the John C. Dunham Pavilion. You will gain practical knowledge from the project’s design professionals and citizen committee,



which can be applied to your own plans back home. You will learn about the challenges, frustrations, and successes of the endeavor, and the public involvement and funding sources which made the RiverEdge Park Music Garden possible.

SUPPLEMENTAL

- <http://riveredgeaurora.com/>
- <https://www.facebook.com/RiverEdgeAurora>
- https://www.aurora-il.org/documents/riveredgepark/RiverEdge_Park_Master_Plan.pdf
- <https://www.aurora-il.org/riveredgepark/history.php>
- https://www.aurora-il.org/documents/riveredgepark/RiverEdge_Park_Presentation.pdf

SUGGESTED POINTS OF CONTACT

- Stephane Phifer, Planning and Zoning Director for the City of Aurora, 630-256-3080 sphifer@aurora-il.org

SUGGESTED PRESENTERS

- Pat Kelsey, Wills Burke Kelsey Associates, PKelsey@wbkengineering.com
- Terry Bohr, R.C. Wegman Construction Company, Terryb@rcwegman.com
- Charlie Zine, RiverEdge Park Committee Resident Representative
- Stephane Phifer, City of Aurora sphifer@aurora-il.org

CONTACT: Stephane Phifer, City of Aurora sphifer@aurora-il.org

Expected Format: Short bus ride to train ride with moderate walking expected.

Expected Duration: Approx. 4+ hours, including a short bus ride and 3 hours on the train.

MW ID NUMBER: 0010 PROPOSED TITLE: FROM ENVIRONMENTAL JUSTICE TO ACTIVE BROWNFIELDS REDEVELOPMENT – LITTLE VILLAGE MOBILE WORKSHOP

Participants will be taken on a bus tour of four impactful brownfield redevelopment sites in the Little Village community which is located approximately four miles southwest of downtown Chicago Home to a largely Mexican-American population, Little Village (also known as South Lawndale) is an environmental justice community challenged with too few open green space areas, air quality issues, and persistent odors that are a legacy of pollution from historical industrial operations. In the last several years, the Little Village Environmental Justice Organization (LVEJO) partnering with Delta Institute, have led Little Village residents in an effort to turn their brownfield legacy into a virtual incubator for redevelopment that improves the health and livability of the community for local residents. On the tour attendees will engage in a discussion of redevelopment challenges, tactics used to overcome challenges and the economic, social and environmental implications of each site for the community.



The tour will stop at four brownfield sites that have been successfully redeveloped or are in the process of redevelopment: 1) the former Crawford coal plant site, which was shut down in 2012 and is being redeveloped to expand access to green space and living wage jobs; 2) Troy Gardens, a former gas station transformed into a community garden and active community summer meeting space; 3) the MWRD Collateral Channel, a part of the Chicago Sanitary & Ship Canal that received wastewater discharge in previous decades and which the community wants cleaned up and backfilled for green space; and 4) Park 553, a new 23-acre park completed in 2014 on the former Celotex Superfund Toxic Waste Site. The final stop of the tour will be the LVEJO offices. The tour will be led by Kim Wasserman Nieto, Organizing and Strategy Director at LVEJO, and Margaret Renas, P.E., LEED AP O&M from Delta Institute.



* If time allows, attendees could stop in for some authentic Mexican fare at La Catedral Cafe & Restaurant, which is just steps away from the LVEJO office.

SUPPLEMENTAL

- <http://lvejo.org/our-accomplishments/community-garden/>
- http://delta-institute.org/delta/wp-content/uploads/Fisk_Crawford_Reuse_Task_Force_Sept-2012.pdf
- <http://www.chicagoparkdistrict.com/parks/park-553---la-villita-park/>
- <http://chicago.suntimes.com/?p=204192>

SUGGESTED POINTS OF CONTACT

- Margaret Renas, Delta Institute, mrenas@delta-institute.org, 312-651-4335
- Kim Wasserman Nieto, LVEJO, kwasserman@lvejo.org, 773-762-6991

CONTACT: Katie Yocum Musisi, kmusisi@delta-institute.org

Expected Format: Bus ride with significant walking expected.

Expected Duration: Approx. 2.5-3 hours

MW ID NUMBER: 0011 PROPOSED TITLE: KAYAK MOBILE WORKSHOP ON THE CHICAGO RIVER

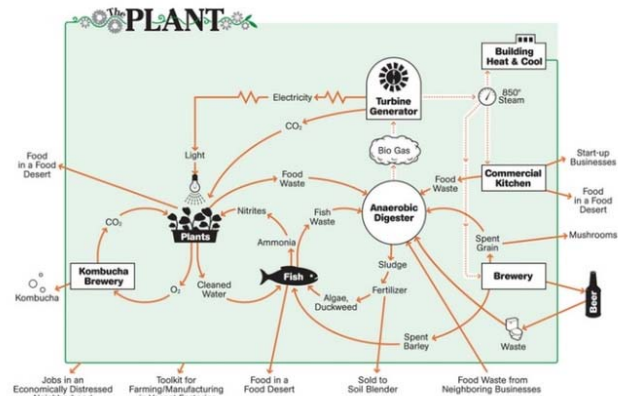
This mobile workshop would take a small group of attendees along on a kayaking tour of Chicago from the Chicago River. This idea is yet to be fully developed, but is listed for your consideration.

Expected Format: Bus to Kayak tour with waiver requirement.

Expected Duration: Approx. 2-3 hours



Participants in the this mobile workshop will be introduced to the new urban agriculture in Chicagoland. The tour would start at [The Plant](#), a new kind of organization in a very old building. It's part vertical farm, part food-business incubator, part research and education space – and it will be entirely off the grid. The Plant is a fish hatchery, hydroponic garden, commercial kitchen, and brewery for both beer and kombucha tea. Founded on a model of closing waste, resource, and energy loops, The Plant is working to show what truly sustainable food production and economic development looks like by growing and producing food inside an repurposed industrial building. From its beginnings as a 93,500 s.f. meatpacking facility,



The Plant is being converted into a net-zero energy food business incubator. A complex and highly interrelated system, The Plant will hold indoor demonstration farms and educational facilities operated by Plant Chicago, NFP and will incubate sustainable food businesses by offering permanent tenant spaces at low rent and low energy costs through Bubbly Dynamics, LLC. The Plant will create 125 jobs in Chicago’s economically distressed Back of the Yards neighborhood – but, remarkably, these jobs will require no fossil fuel use. Instead, The Plant will install a renewable energy system that will eventually divert over 10,000 tons of food waste from landfills each year to meet all of its heat and power needs.

The tour will also take attendees to a couple of the [Growing Power’s](#) Chicago Projects site, which could include:

- **Iron Street Farm** - An abandoned food hub on the south side of Chicago, a 7-acre farm and warehouse with seven hoop houses for year round production, vermicompost, mushroom production, an apiary and urban pygmy goats. Home to one of two composting facilities in Chicago, recycling over 450,000 lbs of “waste” each year.
- **Grant Park, “Art in the Farm” Urban Agriculture Potager**- this “landscaped” urban farm demonstrates how to grow an abundance of vegetables, culinary herbs and edible flowers in a beautiful and productive way. Teens are trained on this site to grow food and give tours to the approximately 10,000 people who walk past this site annually.
- **Jackson Park Urban Farm and Allotment Garden** - a place where neighbors can come together to grow good, safe food on the South Side. Over 20 community gardeners steward this land preserved by the Chicago Park District.

- **Altgeld Gardens Community Farm**- This dynamic urban farm is a Chicago Housing Authority (CHA) project with over 3-acres of growing space. The site has 8 hoop-houses for year-round production and an active apiary. During the summer months, 100 teens are employed on the site, learning farming, culinary, composting and active transport of produce. During the school year, in partnership with Carver High School and After School Matters, 15 teens are employed on the site.
- **Roosevelt Square Youth Farm**- one-acre urban farm, run by neighboring youth. With the assistance of the senior home next door to the farm, teens gauge what to grow based on demand, and sell their produce at an on-site market weekly during the growing season. This farm is a partnership between Growing Power, CHA and After School Matters

SUPPLEMENTAL

<http://www.plantchicago.com/>

<http://www.plantchicago.com/about/>

<https://www.kickstarter.com/projects/351985395/the-plant-living-foyer>

http://www.huffingtonpost.com/2012/05/07/the-plant-explained-chicago-urban-farm_n_1497832.html

<http://www.growingpower.org/>

SUGGESTED POINTS OF CONTACT

- Eugene Goldfarb

SUGGESTED PRESENTERS

- TBD

CONTACT: TBD

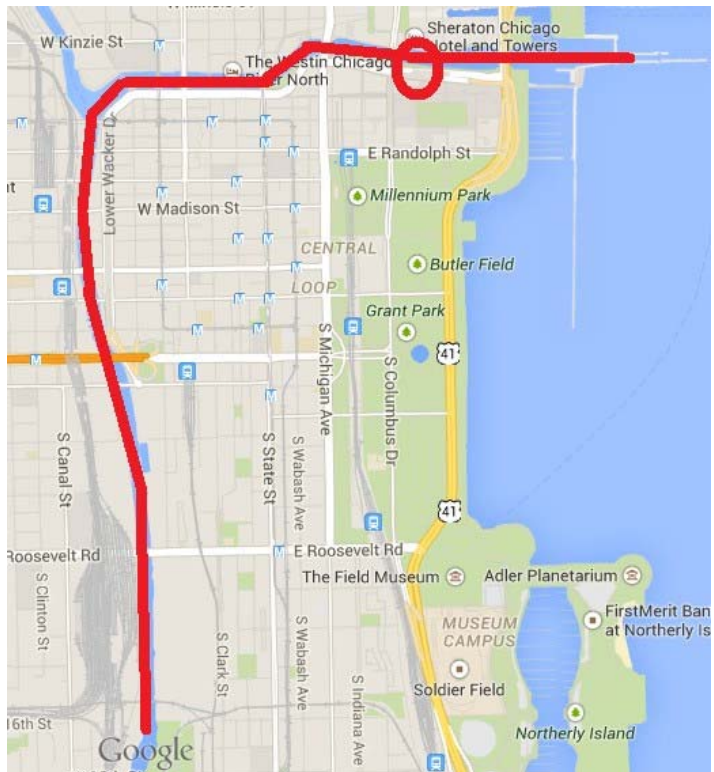
Expected Format: Bus ride with significant walking expected.

Expected Duration: Approx. 2-3 hours

MW ID NUMBER: 0013 PROPOSED TITLE: BROWNFIELD BOAT EXCURSION

The Chicago Architecture Foundation River Cruise aboard Chicago’s First Lady is a “must” for out-of-towners and Chicagoans alike. CAF certified volunteer tour guides—called docents—interpret more than 50 buildings along the Chicago River, revealing how the city grew from a small back-country outpost into one of the world’s most important crossroads in less than 100 years. By renting the boat we can extend the time (standard is 90 minutes) & add brownfield sites and commentary.

*Red line shows potential tour, but another option is through locks into Lake



Learning Objectives:

- History of Chicago – why it is where it is
- Birth of skyscraper
- Some Chicago brownfields (on river)

SUGGESTED POINTS OF CONTACT

- Eugene Goldfarb

SUGGESTED PRESENTERS

- CAF certified tour guides
- supplemental speakers on brownfields along waterfront

CONTACT: Eugene Goldfarb

Expected Format: Boat tour with moderate walking expected.

Expected Duration: Approx. 3 hours

**MW ID NUMBER: 0014 PROPOSED TITLE: SOUTH LOOP WALKING TOUR:
BRINGING THE MIDDLE CLASS BACK TO THE URBAN CORE & NEW CONSTRUCTION
VS. ADAPTIVE REUSE**

In the early 70's the City of Chicago rose up to meet the challenge brought on by two decades of middle class out- migration to the suburbs by forming a limited for profit corporation of the 21 largest companies in the City. The cornerstone of the Chicago 21 Plan was the creation of a new residential neighborhood in the 600 acres of unused railroad land bordered by the Loop to its north and the Chicago River to its west. The new neighborhood would try to attract families by offering large (2-4 bedroom) units and even two story townhomes and security by limiting access into the neighborhood.

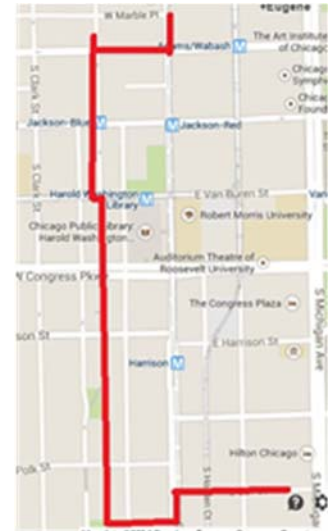
At the same time a group of private entrepreneurs saw a different path to the same end in the area between Dearborn Park and the Loop (CBD) through adaptive reuse of industrial loft structures that had been used by the printing industry.

Both areas are now successful, livable neighborhoods.

Tour would start at Palmer House & end at Hilton

Learning Objectives

- History of Chicago
- Preservation Tax Credits
- Neighborhood Building



SUGGESTED POINTS OF CONTACT

- Eugene Goldfarb

SUGGESTED PRESENTERS

- Eugene Goldfarb, egoldf1@uic.edu, 847-962-1572
- Danielle Potts, Potts.Danielle@epa.gov, 312-353-2058
- Alan Cravitz, cravitz@draperandkramer.com, 312-795-2371

CONTACT: Eugene Goldfarb

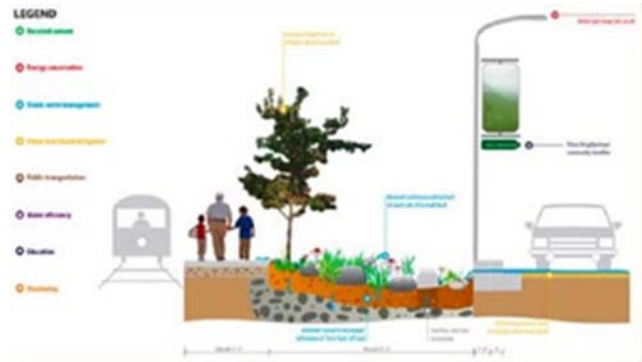
Expected Format: Walking tour, possibly offered multiple times

Expected Duration: Approx. 1.5 hours

MW ID NUMBER: 0015 PROPOSED TITLE: THE GREENEST STREET IN AMERICA – AND A GREEN ALLEY + MARKET TOO!

Come see the greenest street in America! Chicago has built a 1.5-mile-long streetscape that includes:

- Recycling - Reuse of over 90 percent of construction waste from the project and including recycled content in the project’s “new” materials.
- Energy conservation—It uses reflective surfaces on sidewalks and roadways and dark-sky-friendly light fixtures
- Stormwater management—The project diverts 80 percent of the typical average annual rainfall from the storm sewer system to groundwater through use of pervious pavements, bioswales and infiltration planters.
- Urban heat island mitigation—Ambient summer temperatures on streets and sidewalks have been reduced through the use of reflective pavements on roadways, light-colored sidewalks and trees for shading
- Alternative transportation — The Green street is also a complete street with bike lanes and racks, improved bus stops and ADA compliant sidewalks and
- Water efficiency— Native climate-adapted, drought-tolerant plants eliminates need for irrigation.
- Education—Community identifiers and self-guided tour brochures highlight innovative, sustainable features of streetscape
- Monitoring—CDOT (Chicago Dept of Transportation) and its partner, the Metropolitan Water Reclamation District, monitor the project to measure its environmental impacts.



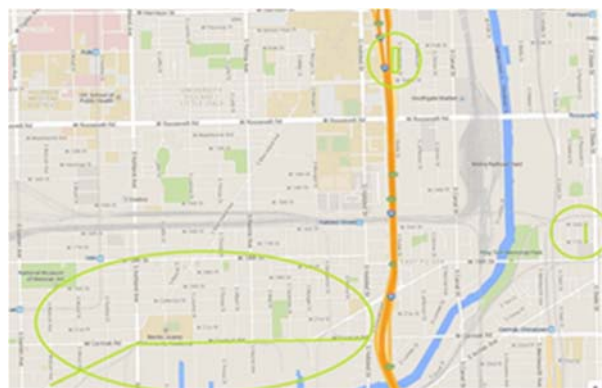
In addition to the Cermak-Blue Island corridor the tour will also include a Green alley and a permeable paver parking lot and bioswale on the site of the relocated Maxwell Street Market.

Learning Objectives:

- See the key components of a Green Street
- Understand what it took to implement the concept
- Understand the benefits of Green Streets and alleys

Tour Stops:

- Cermak/Blue Island Corridor
- Green Alley Dearborn/State 16/17
- Maxwell Street Market Parking Lot



SUGGESTED POINTS OF CONTACT

- Eugene Goldfarb

SUGGESTED PRESENTERS

Janet L. Attarian, AIA, LEED AP BD+C Complete Streets Director, Chicago Department of Transportation,
Ph: 312-744-3100

CONTACT: Eugene Goldfarb

Expected Format: Short bus ride with significant walking expected.

Expected Duration: Approx. 2.5 hours

