

The Innovation Culture: Where Great Ideas Come From

Ken Blankinship

Area Manager, CA/ NV/ HI & US Pacific Territories

&

Adam Carnow

Account Manager



What Activities Drive Innovation?

Funding Trends

Technology Trends

Federal or State Regulations

Citizen Mandates

Incubators and Hackathons

Emergencies and Disasters

Mandates from within Government

Resilient Communities

Smart City

Livable Communities

Safe Communities

Healthy Communities

Sustainable Communities

Smart Grid

Coastal Communities

The App Revolution

Is Making Connections Between Government and Citizens Possible

Anytime

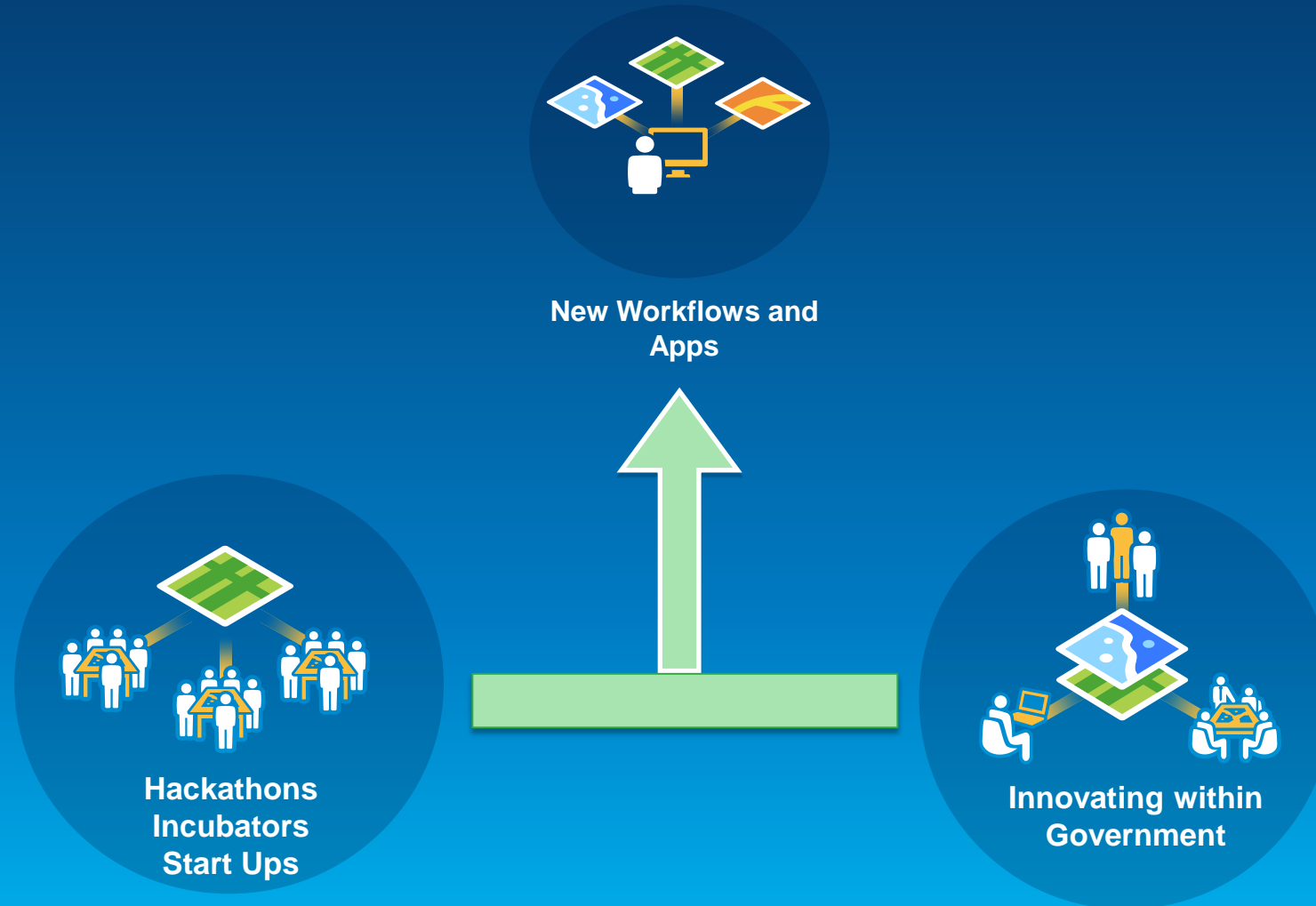


Anywhere

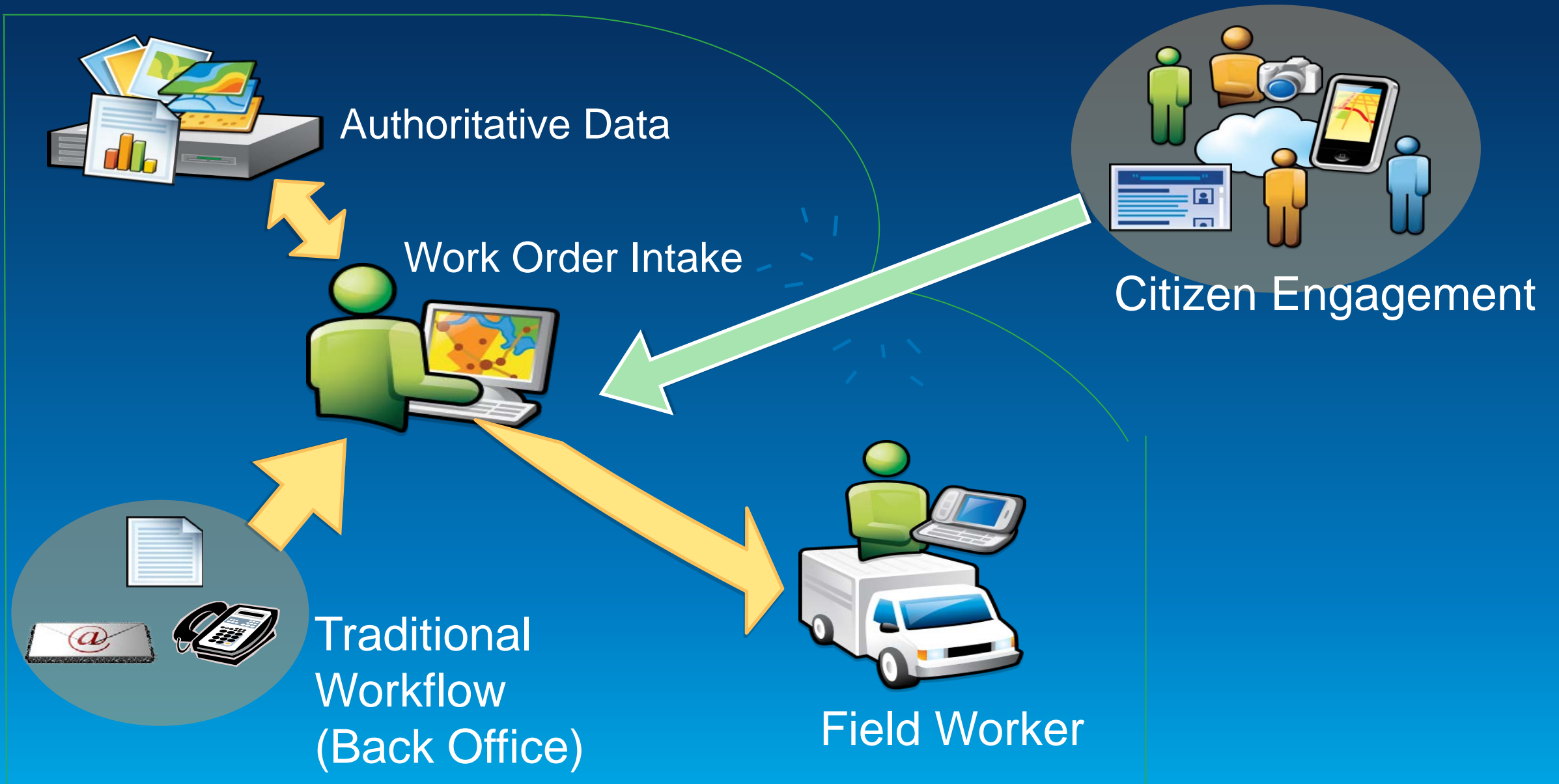
Any Device



Innovation Communities



Bring Two Communities Together





Building Resilient Communities

Transforming How We Understand and Manage Our Future

Esri and ICMA Local Government Technology Alliance

Connect Leadership to the Innovation Process

**Listen to
Constituents and
Governments. . .**

**Respond in a way that
delivers real value**

2013 Esri & International City County Management Association (ICMA) White Boarding Exercise



Executive White Boarding Exercise

- Formal Application Process
- 15 Participants from Cities and Counties
 - Smallest-Lake Isabella, MI (pop. 1,681)
 - Largest- Montgomery County, MD (pop. 989,794)
 - Listed over 200 desired Apps...

ICMA

Leaders at the Core of Better Communities

Executive White Boarding Exercise

- Breakdown the Thinking They Came to the Table With
- Definition of a Good Application
- What are the Characteristics of a Good App?
 - Should Address Gaps in Government Services
 - Should Assist in Automating a Process
 - Should Increase Efficiency
 - Should Provide for Two Way Communication
 - Easy to Maintain
 - Administered with Limited Impact on Staff Time

ICMA

Leaders at the Core of Better Communities

2014 Esri & International City County Management Association (ICMA) Executive White Boarding Exercise



Expectations pg 1

- Local government to use more savvy technology to improve performance
- Awareness of what cities/counties need
- Drivers needed for solutions to deliver solutions tomorrow
- Strategic planning & communication
- Ideas generated from team on solutions

Expectations

- Heavy more stories, easy & creative
- Utilizing data more efficiently for decision making, overcome old data integration challenges
- Making good data-transparent quickly
- How can neighborhoods make improvements? ICMA white trust fund program - how is it back - How do you get info to improve
- Decision making for people
- Enhance local government
- Learn from city, just info from city
- Analyzing staff for

Expectations pg 3

- Needs for

Executive White Boarding Exercise

- Formal Application Process
- 14 Participants from Cities and Counties
 - Smallest-City of Hickman, NB (pop. 1,793)
 - Largest- Riverside County, MD (pop. 2.2 Million)
 - County of Henrico, VA (pop. 314,932)
 - Listed over 100 desired Apps...

ICMA

Leaders at the Core of Better Communities

Executive White Boarding Exercise

The Votes Are In...

Volunteerism and Donations (General)

Mining Social Media

Public Relations Apps-Reverse Chatter

Volunteer Recruiting-Skilled Citizens

Citizen Dashboards

Employer Needs Match

Advertising and Promoting the Community

Building Resilient Communities

Sustainable Government Themes

Conservation Themes Topped List

Emergency Response

Water Conservation

Open Space and Trails

Habitat Management

New Ways to Reduce Traffic

Walkability

Flood Management

Economic Recovery

What are Three Problems Your Customers Need You to Solve?

Sustainable Government Themes

Conservation Themes Topped List

Water Conservation

Open Space and Trails

Habitat Management

New Ways to Reduce Traffic

Walkability

Flood Management

2014 Esri Public Sector CIO Summit



What are Three Problems Your Customers Need You to Solve?

Accountability and Transparency Themes

Dashboards Topped the List

Budget Prioritization Tools

Expenditure Justification Tools

Investment Monitoring

Fee Development Tools

Demand to Expenditure Tools

Citizen Budgeting Tools

Fraud Detection Tools

2014 Esri Public Sector CIO Summit



What are Three Problems Your Customers Need You to Solve?

Accountability and Transparency Themes

Dashboards Topped the List

Budget Prioritization Tools

Expenditure Justification Tools

Investment Monitoring

Fee Development Tools

Demand to Expenditure Tools

Citizen Budgeting Tools

Fraud Detection Tools

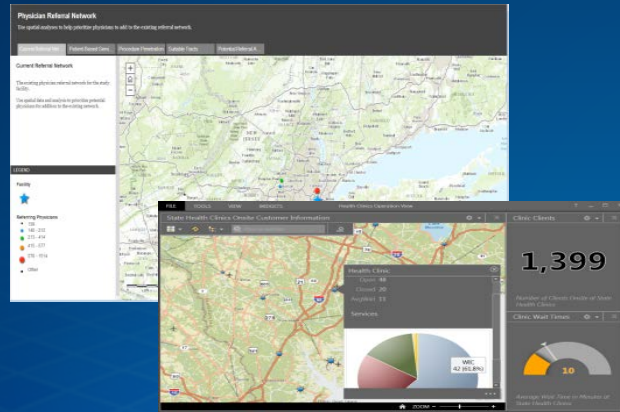
Armed With Knowledge

Now What?

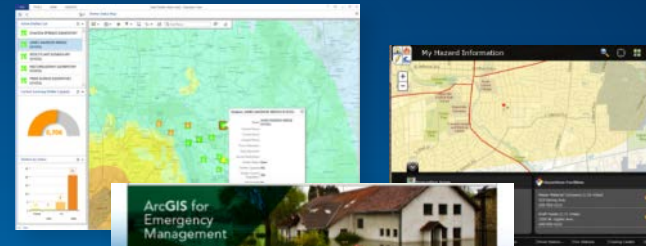
Local Government

Industry Template Apps, Maps,
and Platform Configurations

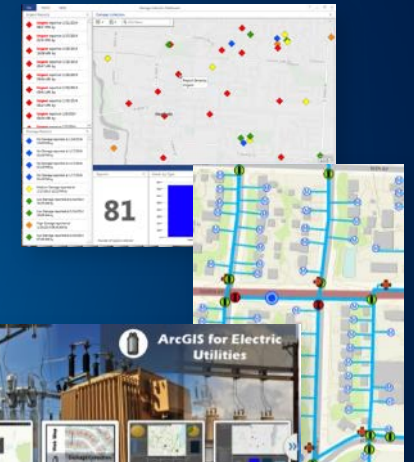
- Free to Users
- Easily Configured
- Fully Supported
- Open Source



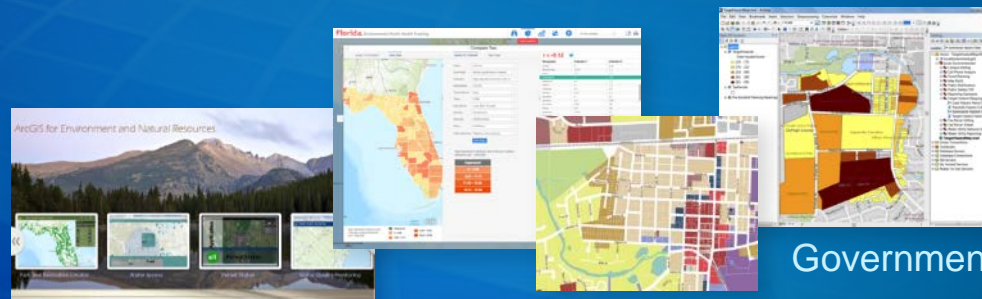
Executive Dashboards



Emergency Management



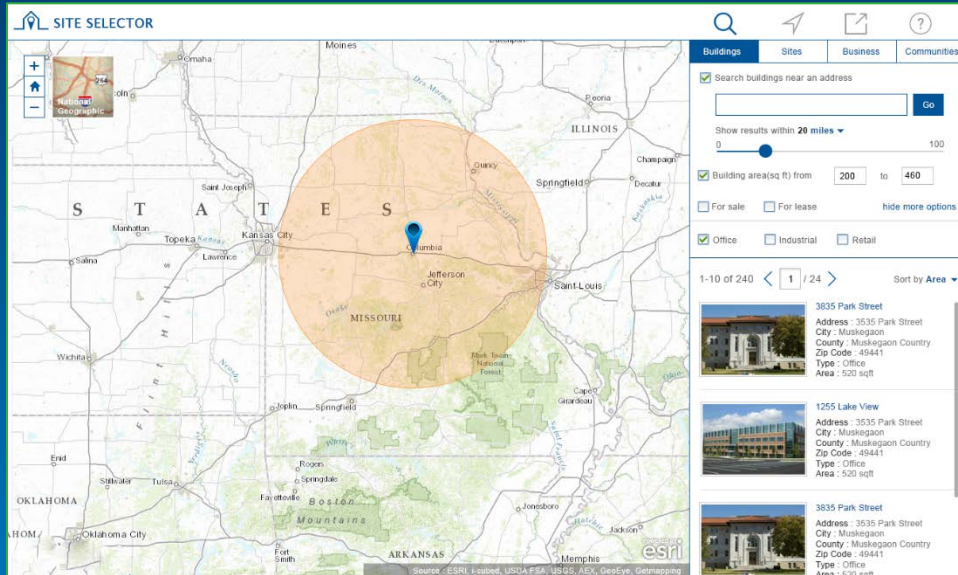
Utilities



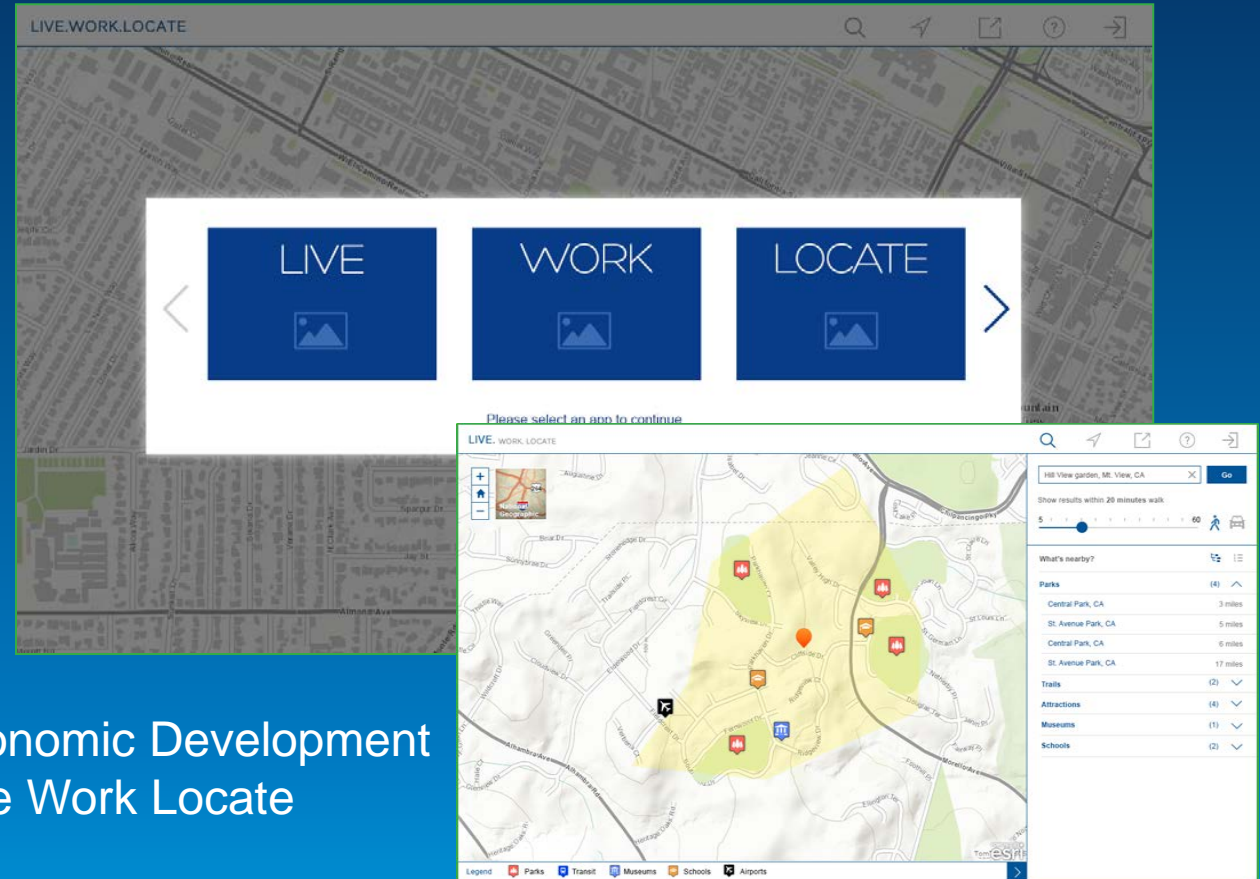
Government

... A Resource of 150+ Smart Communities Solutions Leveraging Best Practices

ArcGIS for Local Government Supporting ICMA Outcomes



Economic Development
Site Selection Tool



Economic Development
Live Work Locate

Upcoming Activities

ICMA

Executive Summit-Redlands
Sustainability Officers

Oct 16, 2014

Innovations Resources

- www.esri.com/govinnovation

#LocalGov Technology Alliance



The #LocalGov Technology Alliance is an Esri-ICMA initiative to explore the world of big data, open data, apps and dashboards, and what it all means for local governments.

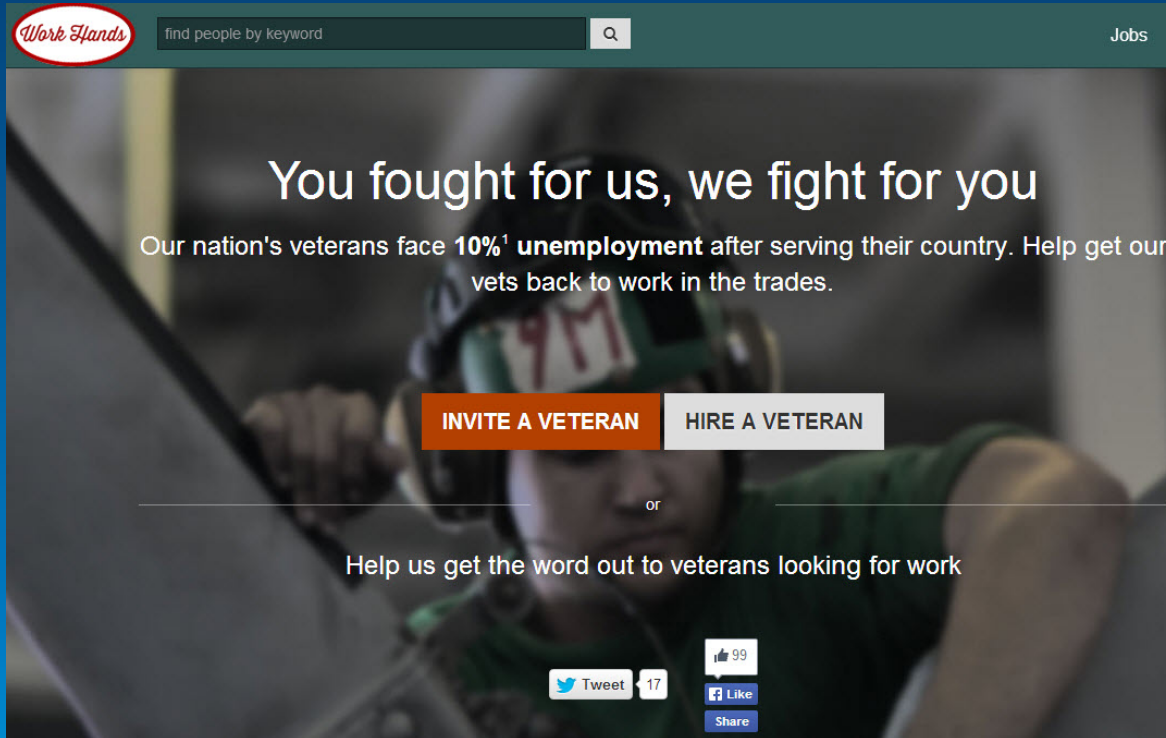
Local government managers need to know what questions to ask about data and information, and how they can best take advantage of the efficiencies new technology affords their efforts to deliver high quality service to residents.

Here you'll find resources to help you navigate the complex world of technology .

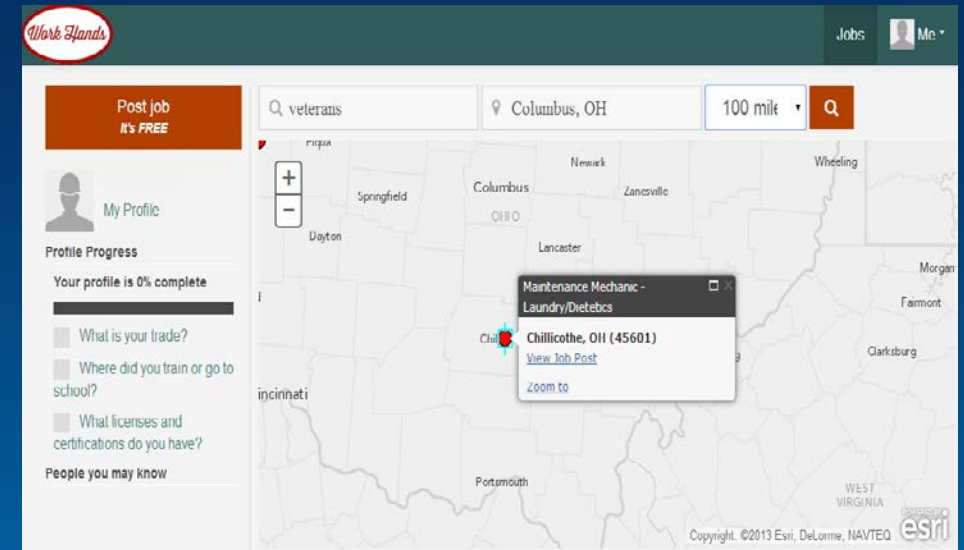
www.icma.org

Innovation

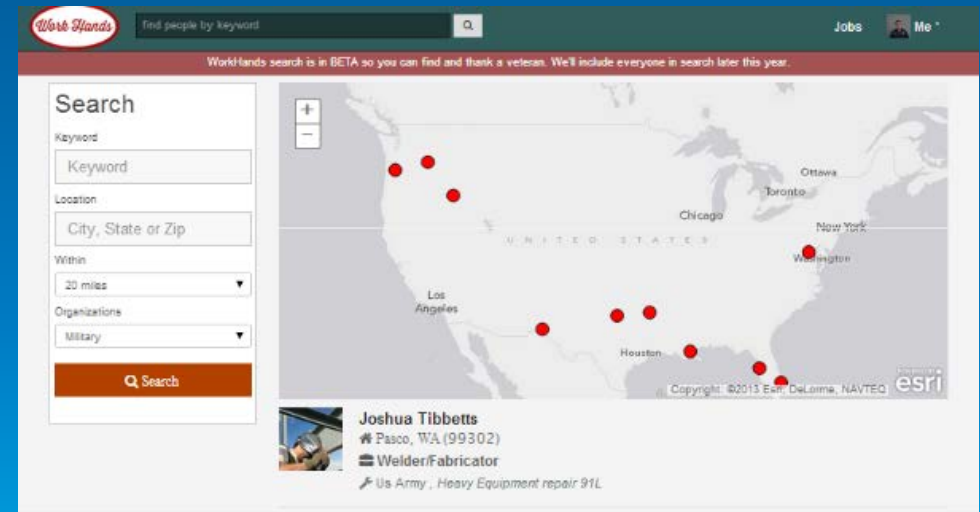
Start Up: WorkHands



The landing page features a background image of a person in a green military uniform with a '91M' tag. The main headline reads 'You fought for us, we fight for you'. Below this, a sub-headline states 'Our nation's veterans face 10%¹ unemployment after serving their country. Help get our vets back to work in the trades.' Two prominent buttons are present: 'INVITE A VETERAN' in orange and 'HIRE A VETERAN' in white. A secondary line of text says 'Help us get the word out to veterans looking for work'. At the bottom right, there are social media sharing options for Twitter (17 tweets), Facebook (99 likes), and a 'Share' button.



This screenshot shows the search results for a job post. The search criteria are 'veterans' and 'Columbus, OH' with a 100-mile radius. A map displays the search area around Columbus, Ohio. A pop-up window for a job post is visible, titled 'Maintenance Mechanic - Laundry/Dietetics' in Chillicothe, OH (45601). The job post includes a 'View Job Post' link and a 'Zoom to' option. On the left side, there is a 'My Profile' section with a progress indicator showing 'Your profile is 0% complete' and a list of questions to be answered, such as 'What is your trade?' and 'Where did you train or go to school?'.



This screenshot shows the search interface for a user profile. The search criteria are 'Military' and 'Pasco, WA' with a 20-mile radius. A map displays the search area around Pasco, Washington. A pop-up window for a user profile is visible, titled 'Joshua Tibbetts' in Pasco, WA (99302). The user profile includes a 'Welder/Fabricator' title and a bio: 'Us Army, Heavy Equipment repair 91L'. The search interface includes a 'Search' button and a 'WorkHands search is in BETA' notice.

Veterans Services API combined with ArcGIS Online

Identifying Trends Challenges and Hackathons

Climate Resilience App Challenge 2014

HOME GALLERY MAP GROUPS Sign In

Esri Climate Resilience App Challenge 2014

Are you a developer with an innovative idea for an app that could help communities become more resilient to climate change? Could your idea use Esri technology? Find out on the Esri Climate Resilience App Challenge 2014.

[View the Challenge](#)

Background

In June 2013, President Obama announced his comprehensive Climate Action Plan. This blueprint for action includes the Climate Data Initiative, an effort to encourage and incentivize to join the effort through change data and science to compelling ways to help citizens, businesses, and communities make smart choices in the face of climate change.

It also aims to help our President reach this goal. We encourage you to develop apps, changing data that promote climate resilience. We continue to try to make a difference in the world and we know you, in our world, do too. That's why we're challenging you to get creative for the resilience initiative using the growing pool of openly available data and our maps, services, and APIs.

The Challenge

How do changes in weather patterns going to impact the United States? And how do we want preparing for these changes? What makes cities more resilient to climate change? Climate threats such as drought and floods, what do they mean for you and for the world? What about the impact of sea level rise on coastal cities? How do we build a more resilient world? These are the questions we want you to answer.

We'd like you to focus on how using the Esri ArcGIS Platform for the theme of using technology to create more resilient communities, sea, and water, and prepare for climate risk. When the Esri community projects the world's best water, we'll create a team of experts to help you in making your app changes to make our carbon footprint. They will address challenges in public safety, transportation, economic development, healthcare and more. Be sure to submit to their website any effective use of data, Esri maps, maps, services, and APIs.

You are encouraged to explore all aspects of the Esri ArcGIS Platform. From tools for change through, mobile, and business. In the Esri community, we'll help you create, maintain, and improve your app, and we'll help you build it.

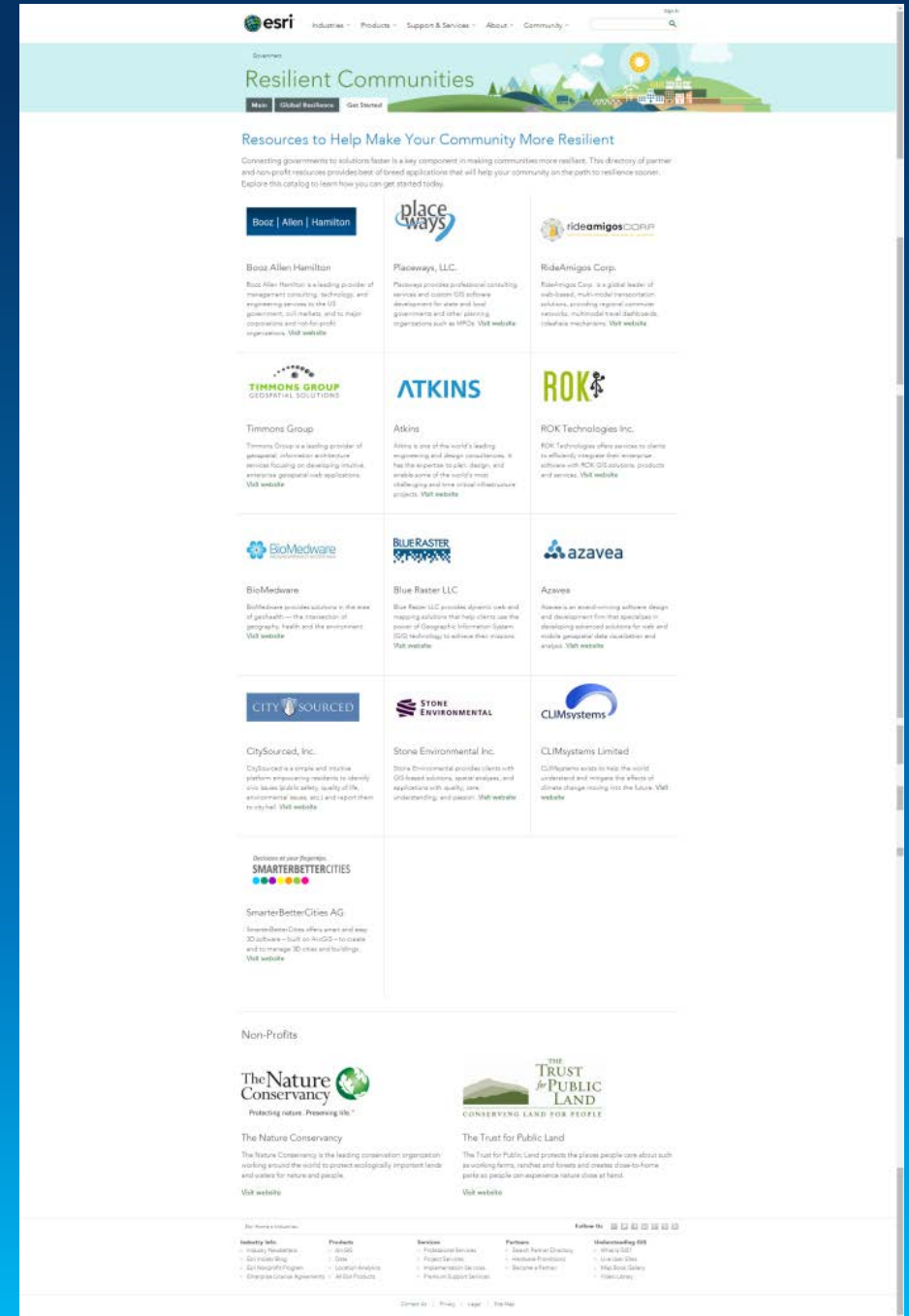
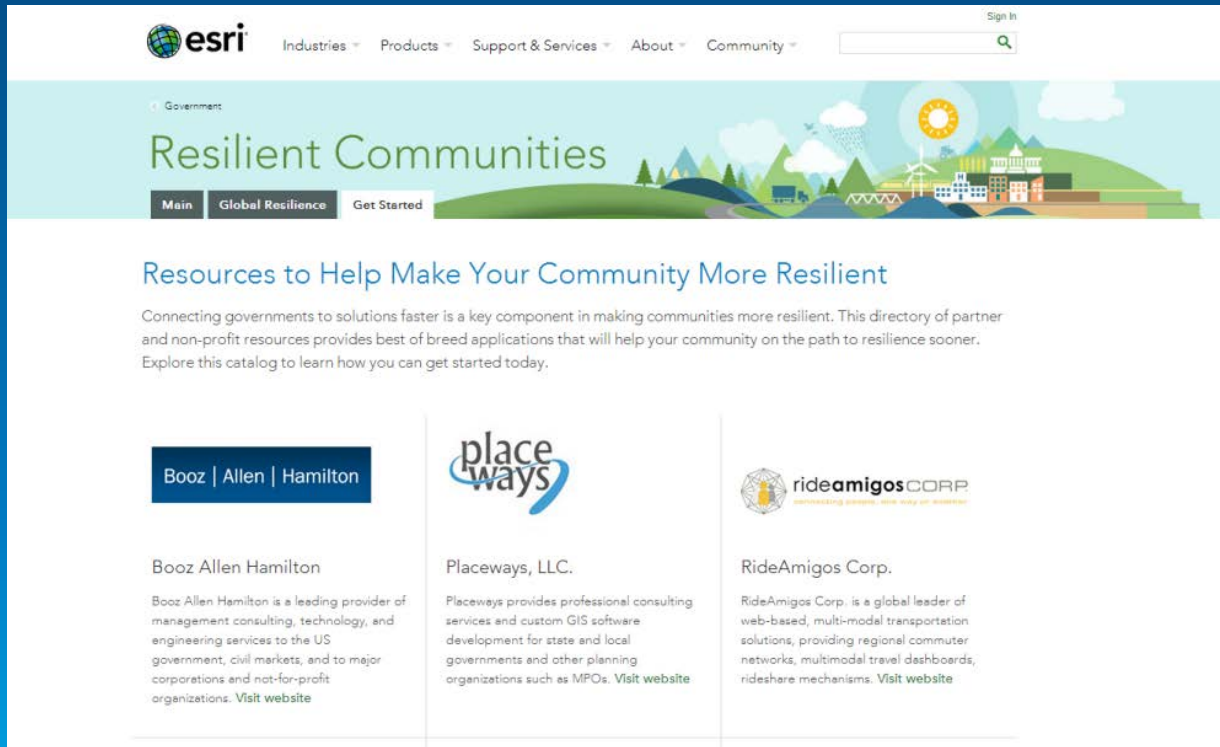
To see the full program details...

Community Resilience Partners



Building a Resilient Platform

Jump Starting the Climate Resilient Community Connecting Organizations to Apps





Understanding our world.