

# Sustainability Lessons in Small Towns and Rural Communities

Maria Lasday, Village Manager  
Village of Bannockburn  
ICMA Conference Presenter



# Village of Bannockburn



- Population consists of corporate, residential, retail and college sectors
- 25,000 daytime population
- 1583 evening population
- 2 ½ square miles



## Bannockburn's Stormwater Conditions in 2008

- When I began my current Village Manager position with Bannockburn in April 2008, Stormwater Management was a serious issue.
- After heavy rains, severe flooding occurred.
- FEMA funds obtained due to stormwater damage and costs of clean-up in 2008.

## Example of Flooding in Bannockburn 2008











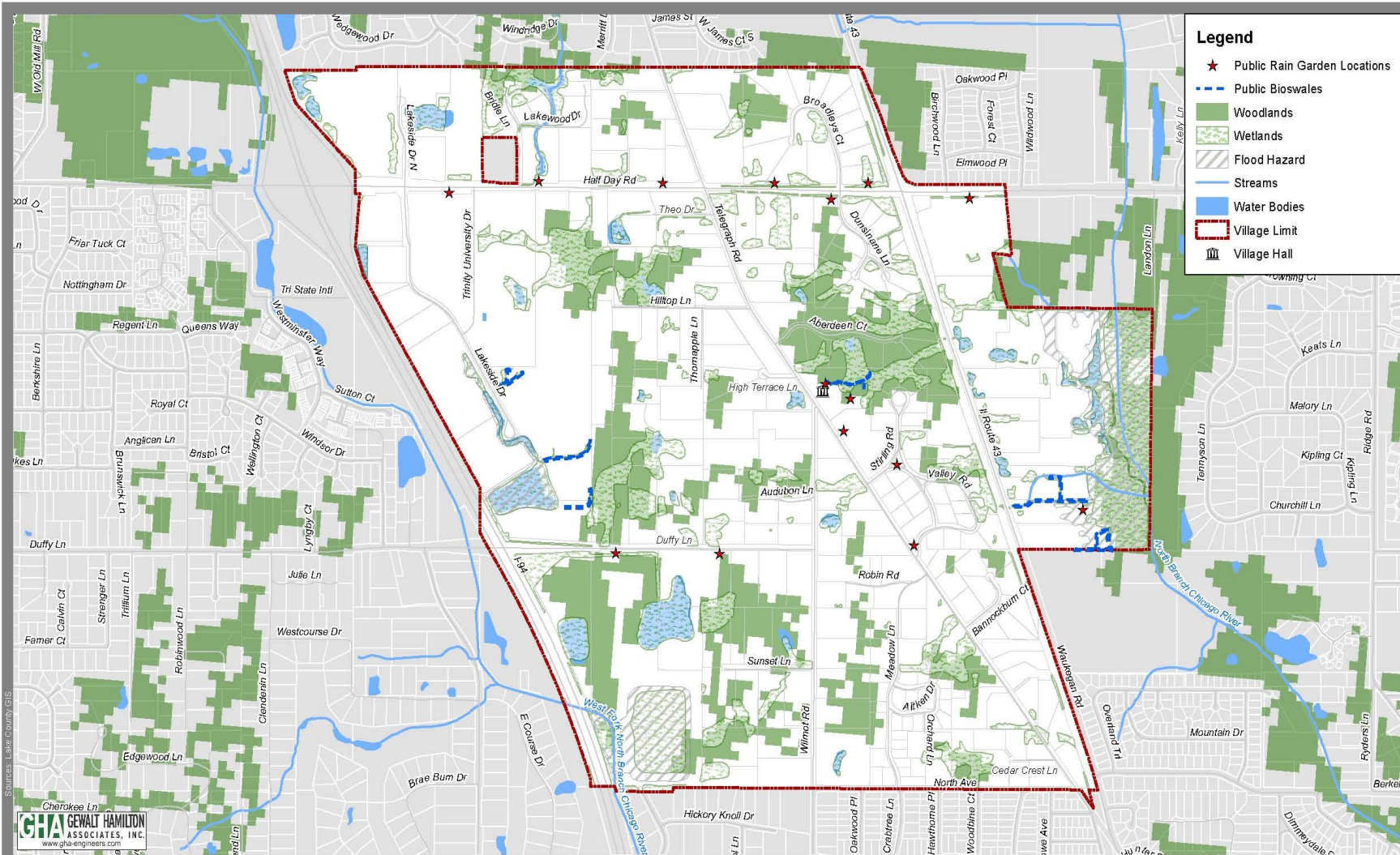
## Approach to Solve Flooding Problem and Reduce Cost of Clean-up: Green Solutions

- Incorporate Solutions into the Village's 5 Year Strategic Plan and Capital Plan
- Seek Grants
- Educate Residents, Businesses and College
- Lead by Example
- Implement Best Management Practices



# Bannockburn Best Management Practices

- Preservation of Wetlands
- Encourage Wildlife Habitat
- Installation of Rain Gardens
- Installation of Bioswales
- Removal of Buckthorn and Invasive Species
- Installation of Native Plantings
- Encouraging Pervious Surfaces (Porous Pavers, Porous Concrete Sidewalks & Turfstone Grass Parking Spaces)
- Naturalization and Landscaping of Detention Ponds



### Legend

- ★ Public Rain Garden Locations
- Public Bioswales
- Woodlands
- Wetlands
- ▨ Flood Hazard
- Streams
- Water Bodies
- ▭ Village Limit
- ⛪ Village Hall

Sources: Lake County GIS

Drawn by GIS team - File: C:\189\Lake\Exhibits\Maping\Exam\_Comp\_Plan\Exhibit 11\_Natural\_Resources\_Map.mxd



## Map 11 - Natural Resources Map

Bannockburn Comprehensive Plan  
Bannockburn, IL

Map Center: -87.87135 42.19268

Date: 8/22/2013 Project: 8101.000



# Goal for Rain Gardens and Bioswales: Infiltrate Storm Water Runoff During a Rain





# Village of Bannockburn Projects

1. Best Management Practices - Village Hall Location
  - Rain Gardens
  - Wetland Creation
  - Bioswales
2. Local Roads
  - Rain Gardens Installed in Depressed Areas in ROWs
  - Bioswales
3. Village ROW – State ROW - Various Locations
  - 8 Rain Gardens
  - 3 Bioswales



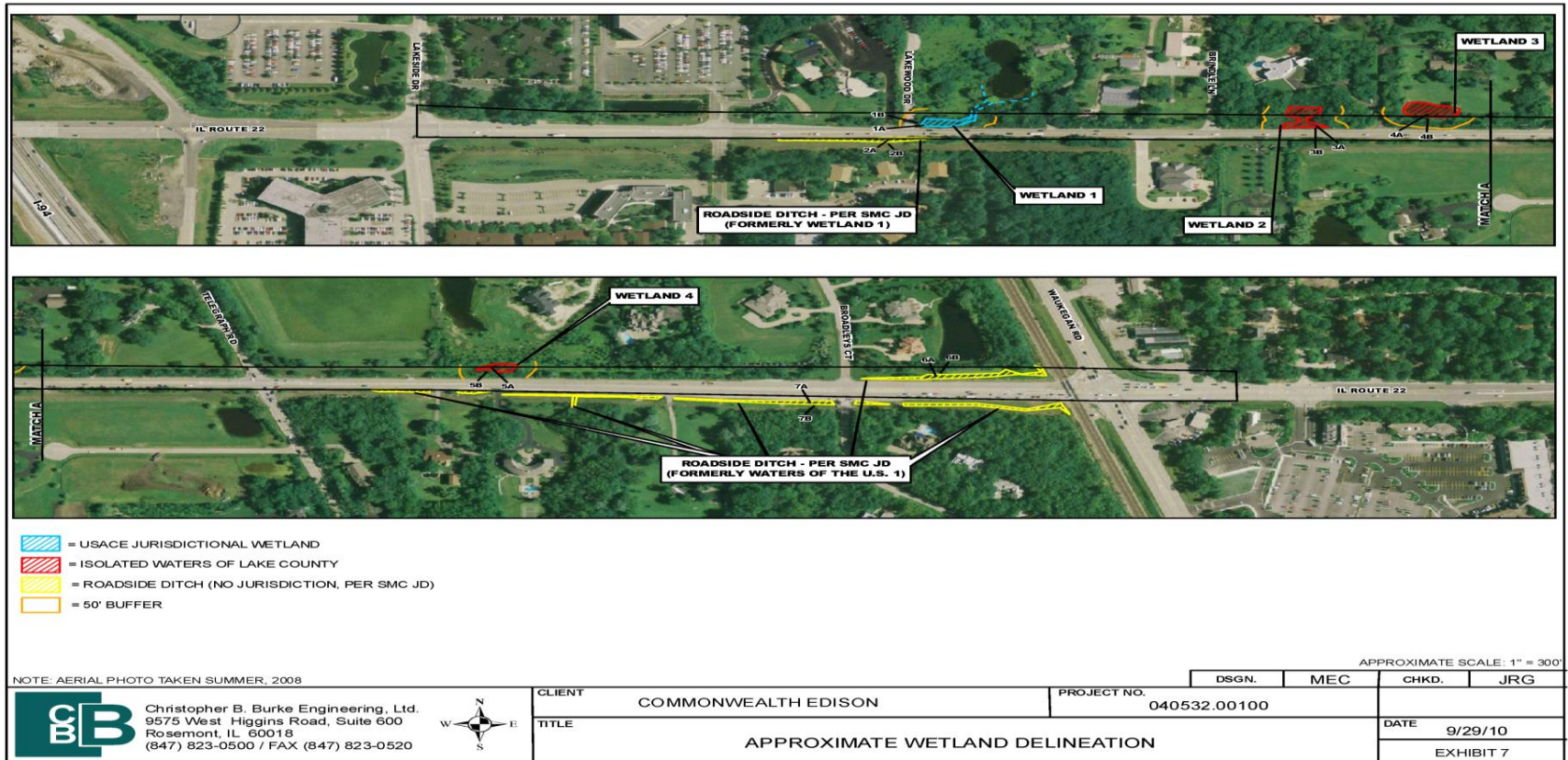
# Examples of Roadside Rain Gardens in Right of Way



## Residential Projects

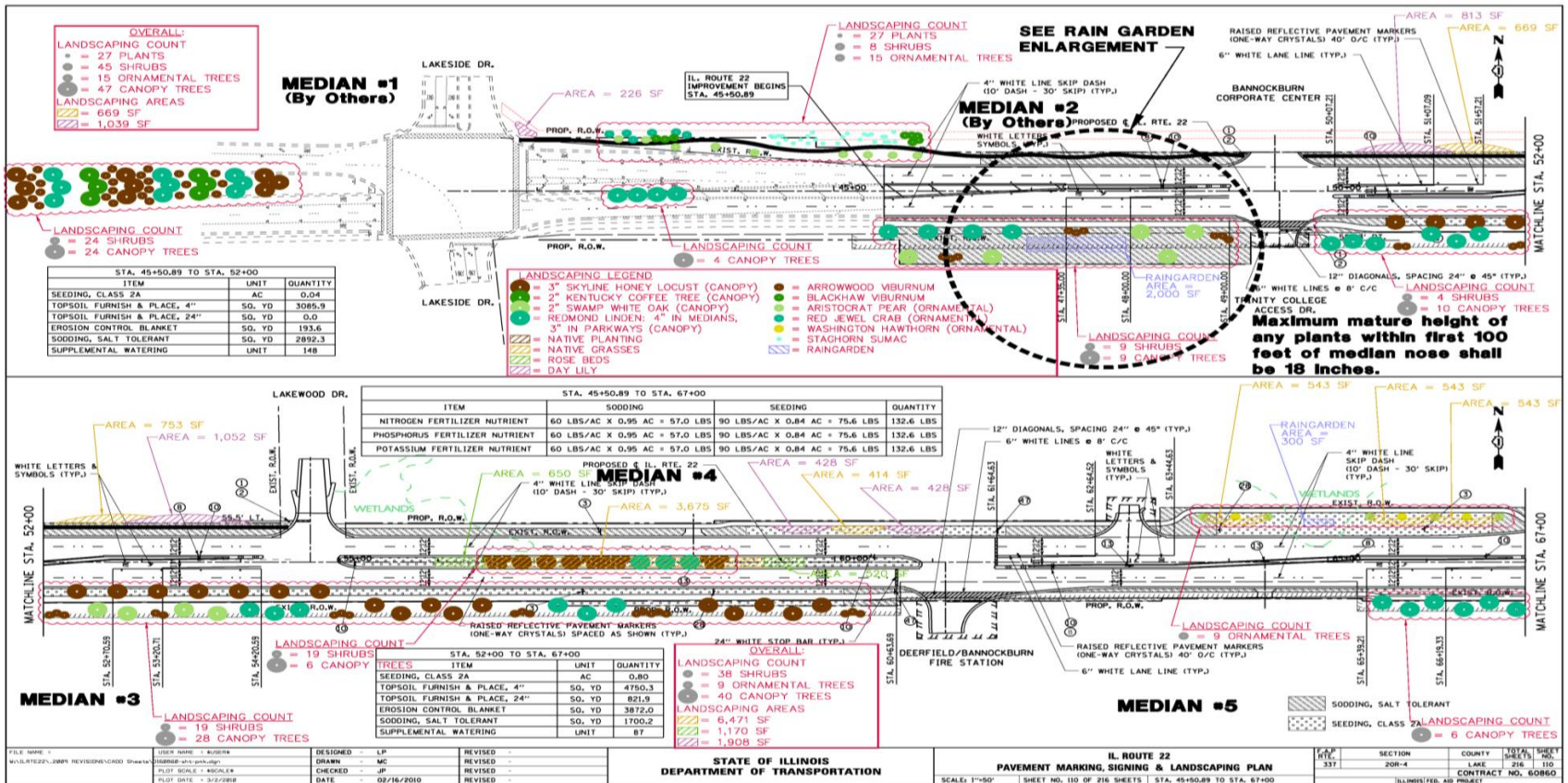
- Rain Garden Program Implemented in the Residential Program – up to \$2,500 grant per rain garden.
- Goal of Program - keep water on own property and water back into aquiver system. Be good to the environment and thy neighbor.
- Program a Success. Residents installing rain gardens
- Educating Residents is key to success.

# Incorporation of Best Management Practices – State Widening Project - Ideal in the Depressed Areas and Wetland Areas





# IDOT Incorporation of 8 Rain Gardens into State Widening Project Plans – Including 3,500 sq. ft. on Trinity University International Property





## Bioswales Incorporated into the Route 22 Widening Project Similar to other Village Bioswales



## 2013: Bioswale Captures Water from Heavy Rain



## Summer 2013 – Record Rainfall in Illinois

- State qualified for FEMA funds
- Neighboring Communities had roads closed
- In 2013, Bannockburn did not qualify for FEMA funds (minimum threshold - \$1,000). Less than \$1,000 spent for clean-up. No roads closed in Bannockburn.
- In 2008, Bannockburn received approximately \$50,000 in FEMA and State funds for costs related to heavy rain storms.

# Questions/Comments?

For Additional Information, contact:

Maria Lasday

Village of Bannockburn

2275 Telegraph Road

Bannockburn, IL 60015

847-945-6080

[mlasday@villageofbannockburn.org](mailto:mlasday@villageofbannockburn.org)





**ICMA**  
99<sup>TH</sup> ANNUAL CONFERENCE  
**BOSTON**  
**NEW ENGLAND**   
**September 22-25, 2013**