

# ***GIS: The link between services and the community***

Matthew Dondanville

ICMA Conference Presenter



# Who am I?

- Why Am I Here?
- What will I accomplish?
- What can you take away from this presentation?
  - That GIS can be useful and affordable for any size city.

# The Geospatial Profession

- Engineering consultants are not always GIS consultants
  - What is a GISP
    - Bread and butter
    - Affordability
    - Industry Knowledge
    - Tailored Solutions

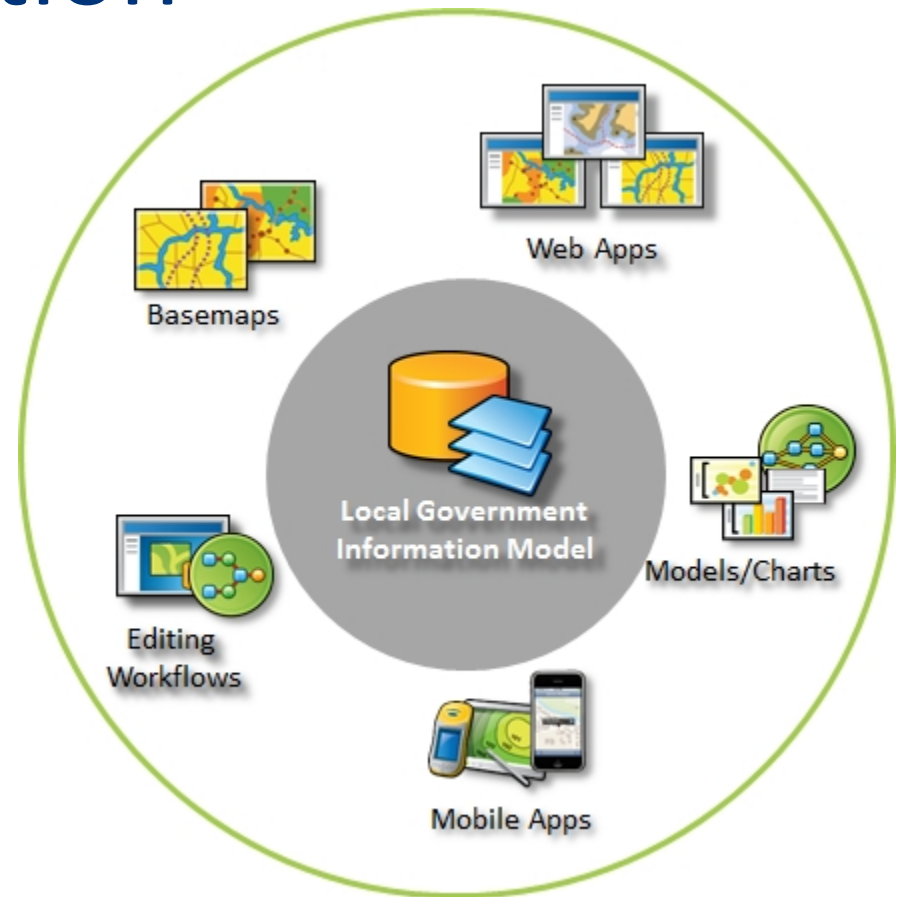


# GIS Recap

- Location Information to make informed decisions
- Manage data using location rather than file cabinets
- Different from County GIS

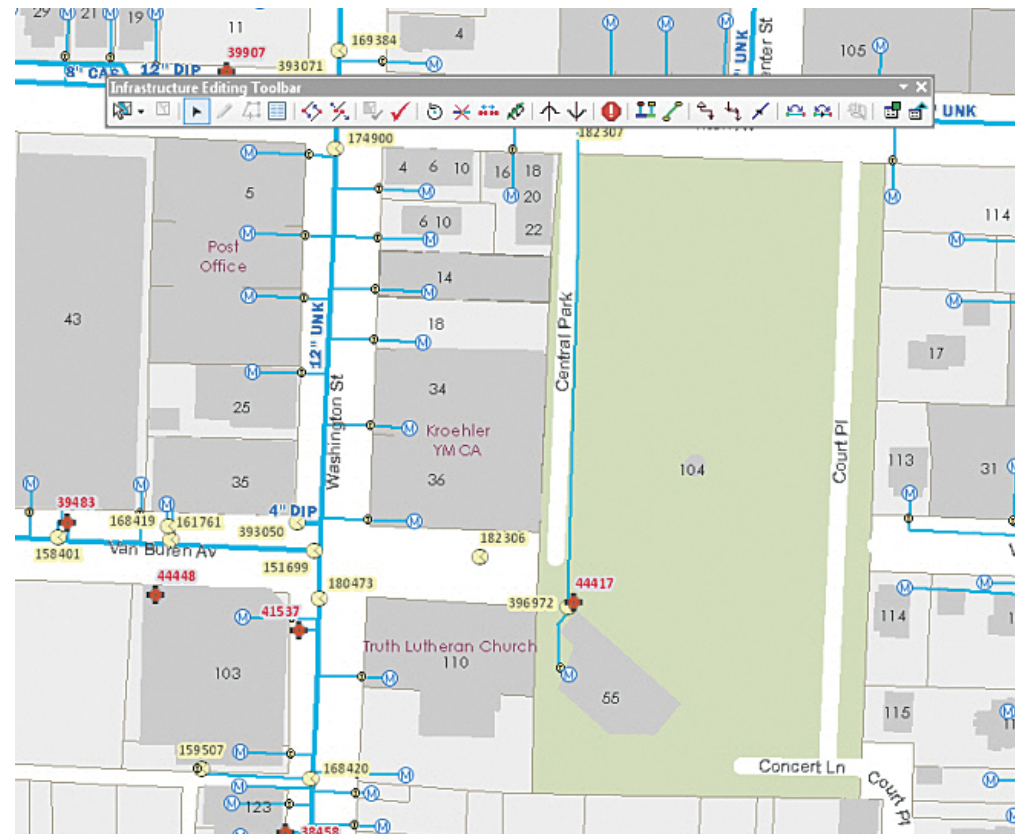
# Data Standardization

- Information Models
  - ESRI Standardization
    - Local Government
    - Tax Parcel Editing
    - Multispeak
    - Telecom
    - A lot more...



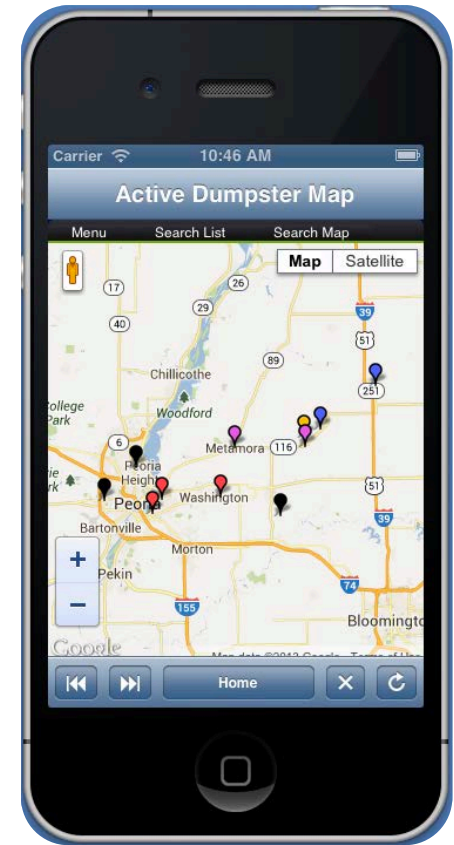
# Plug & Play Solutions

- Tool Templates
  - Water Utility Tools
  - Parcel Editors



# Field Apps

- ArcGIS Collector
  - Customizable Field Apps
    - Pictures
    - Live Updates
    - Work Order Management
    - Easy data collection and updates



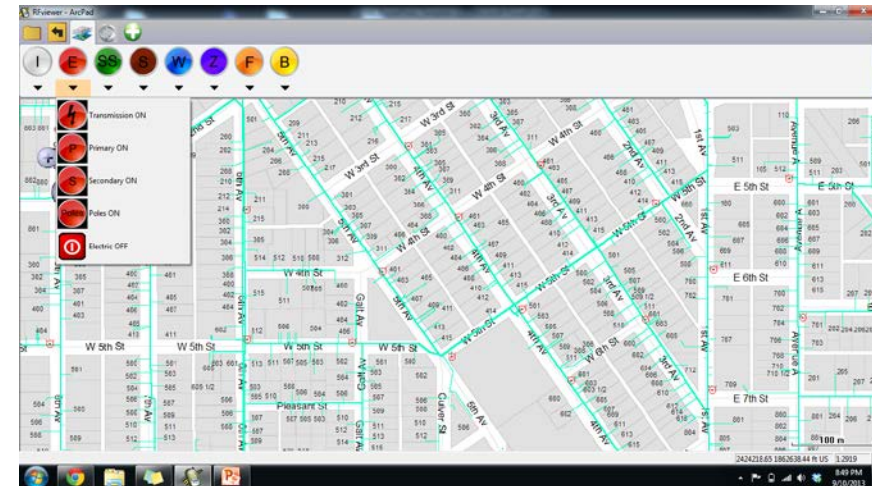
# County vs. City

- County GIS (Most counties have a GIS)
  - Parcels
  - Land Management
  - Land Use
- GIS Consortium
  - Regional Standardization
  - Edge Matching between counties and Cities
- City GIS
  - Local infrastructure
    - Where is your sewer / Water / Electrical



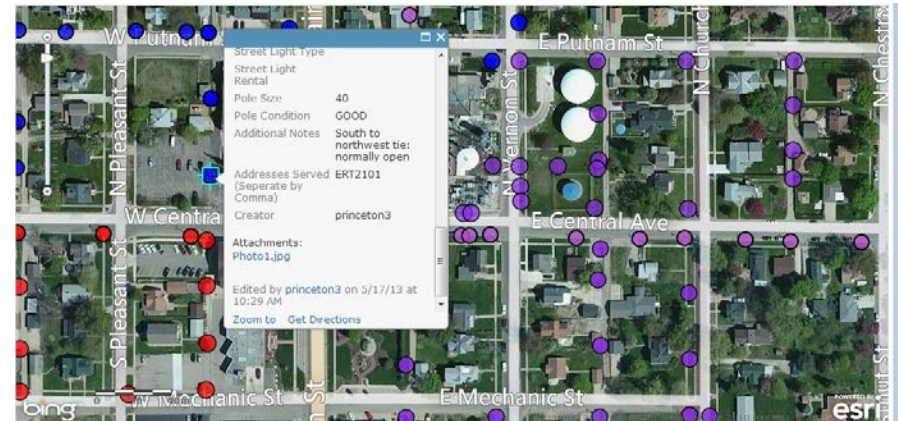
# Utilities

- Rock Falls
  - Outsourcing GIS department
    - Industry leading innovation
    - Enterprise GIS deployment
    - Cost Savings
- Rochelle
  - Fiber cut lead to GIS
    - Saving Money
    - Keeps Customers Happy



# Saving Money

- Princeton, Illinois
  - City wide Pole Inventory
    - ArcGIS Collector (Ipad)
      - Your utility crew knows best
      - Cheap and efficient
      - Geocoded Photos
  - Maintenance
    - Easy updates
    - Field/Office Sync



# Small Town GIS – Fairbury, Illinois

- Population 3,700
- Hand Drawn Maps
- Institutional Knowledge
  - What happens after main foreman retires



# Fairbury Today

- Ipad's
  - Custom Viewing tools
- Field Redline Tools
  - Evernote
  - Sync to Office for GIS Updates
- Increase Speed
  - Maps in the palm of your hand

# How to sell the board

- Describe the difference between a City Wide GIS and what the county provides.
- ROI
  - Time and Efficiency
  - More with Less
- Not just for Big Cities
  - Ex. Fairbury, Illinois

# Questions/Comments?

Matthew Dondanville

[mdondanville@cloudpointgeo.com](mailto:mdondanville@cloudpointgeo.com)

Cloudpoint Geographics

Roanoke, Illinois



**ICMA**  
99<sup>TH</sup> ANNUAL CONFERENCE  
**BOSTON**  
**NEW ENGLAND**   
  
**September 22-25, 2013**