

# States of Emergency

Mark Christensen

ICMA Conference Presenter



# Who am I?

- Why Am I Here?
- What will I accomplish?
  - Explore best practices in emergency management
  - Identify opportunities to prepare your community for an emergency
  - Discuss how to transform a disaster into a community building opportunity
- What can you glean from listening to me?
  - A long list of what not to do
  - A better understanding of best practices

# Alternate titles for presentation:

- One exploding target can ruin your whole year!
- Things can always get worse!
- Murphy's: It is a law not a suggestion!
- 101 uses of concrete barricades.

# 2012 Opportunities for growth

## Mayoral Congressional Run

- (Politics, Media, and Scrutiny - Jan 2012)

## Dump Fire

- (Explosive targets and brain damage- June 22)

## Past Decisions

- (Development Agreement - Oct 9, 2002)

## The Accident

- (June 2, 2012)

## The Storm Event

- (Sept 1, 2012)

Perfect storm

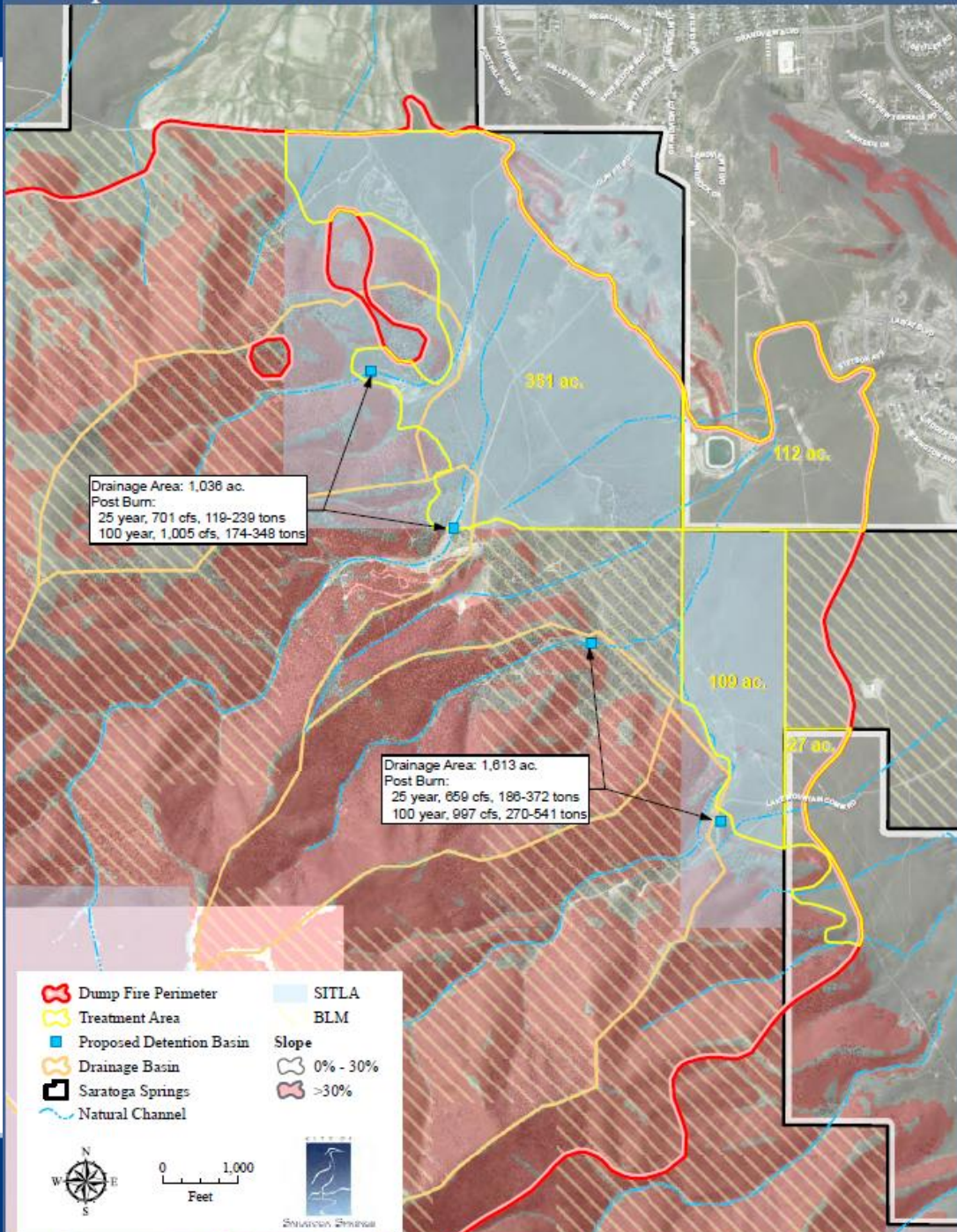


# Dump Fire June 21, 2012



# Press Conference Review (Insert Video Clip)

# Dump Fire Reclamation



- 5,502 ac burn scar
- 8.6mi<sup>2</sup>
- 5mi<sup>2</sup> total drain into City
- 139 ac in City limits. 2.5%
- N. Drainage 1.6mi<sup>2</sup>
- S. Drainage 2.6mi<sup>2</sup>

Sept 2011



© 2012 Google  
Image USDA Farm Service Agency

Google earth

Imagery Date: 9/14/2011



1993

40°18'32.18" N 111°54'53.26" W elev 5062 ft

Eye alt 8070 ft

ICMA



# The Flood (Insert Video)

- 1.25" of Rain in 20-30 Minutes
- 20 Minutes= 10 year Flood
- 30 Minutes= 50-100 year Flood

# Debris Flow 9-1-12



# Flood Area September 2012



**Detention Basin Filled  
with Water & Mud**



**Mud Filled  
Basements & Yards**



**Backyards on Lariat  
Where Mud & Debris  
Overflowed**



# Volunteers Helping Clean Mud out of Basements



**Removing mud from detention basin  
continues through 9/12/12.**





**Spillway created on East side of detention basin at low spot. If the basin fills it will overflow at this location and be directed through proper channels.**



**Drainage Channel after  
storm and before  
improvements.**



**Drainage Channel after improvements. The Channel has been widened and armored. A wider channel will slow the flow of water and settle debris out of flow.**



**Culverts (that were plugged with debris) were removed opening up the channel to the detention basin and preventing future spillover onto residential properties.**



**Gabion (wire) baskets that were filled by volunteers. They are armored with jersey barriers and additional rock to help keep the dams in place. These dams allow low water levels through and filter debris out of flow.**



**Front of check dams in  
lower channel.**



**Channel armored with jersey barriers as it approaches subdivision.**



**Check dam being built on upper channel. This dam is approximately 6 feet tall.**





**Series of silt fences installed on smaller channels to protect homes.**



**Silt fence. Includes one field fence and one chain link fence with a heavy duty fabric liner. These fences will hold water back and prevent debris flow.**



# Social Media (Insert Video Clip)

# Vulnerability Assessment

- Google Earth
- Existing Studies and Reports
- GIS Data for City
- Utilize Technology and other resources to know your City and assess your threats.

9/14/2004

# August 2004



© 2012 Google  
Image USDA Farm Service Agency

Google earth

History Date: 8/24/2004

1993

40°18'47.83" N 111°54'55.26" W elev 4987 ft

Eye alt 8070 ft

ICMA

May 2006



© 2012 Google

Image © 2012 DigitalGlobe

Google earth

Image Date: 6/23/2005 1993

40°18'13.26" N 111°54'58.29" W elev 5159 ft

Eye alt 8070 ft

ICMA


June 2006



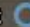
© 2012 Google

Image © 2012 DigitalGlobe

Google earth

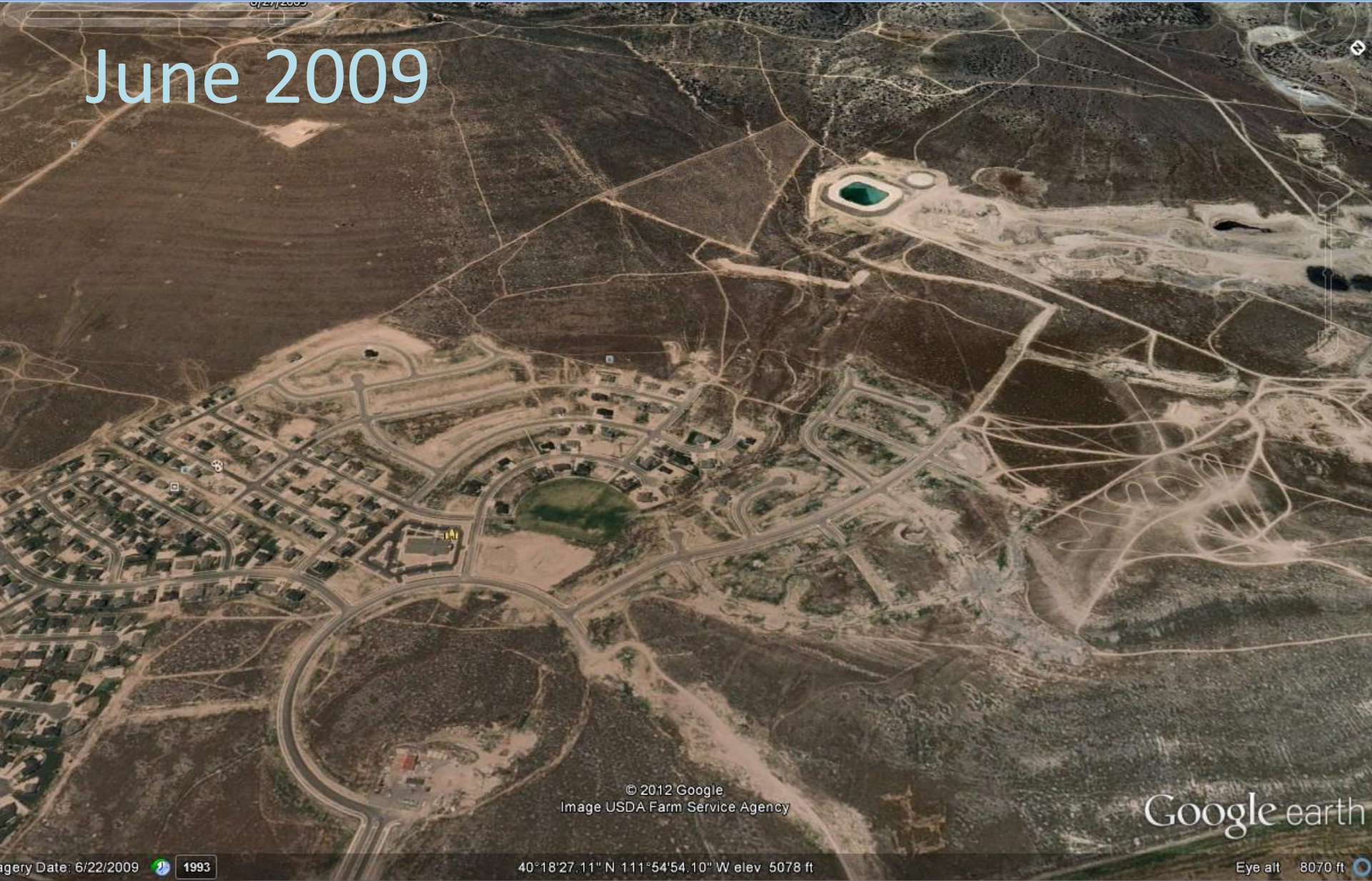
History Date: 5/25/2006  1993

40°18'17.88" N 111°54'55.82" W elev 5120 ft

Eye alt 8070 ft 

**ICMA**

June 2009



© 2012 Google  
Image USDA Farm Service Agency

Google earth

Imagery Date: 6/22/2009 1993

40°18'27.11" N 111°54'54.10" W elev 5078 ft

Eye alt 8070 ft




# September 2011




© 2012 Google  
Image USDA Farm Service Agency

Google earth

Imagery Date: 9/14/2011  1993

40°18'32.18" N 111°54'53.26" W elev 5062 ft

Eye alt 8070 ft 

**ICMA**

September 2012



# Round Table Exercise

## UCMA Facilitators

- Matt Dixon, South Ogden
- Jamie Davidson, Orem
- Scott Darrington, Pleasant Grove
- Jason Walker, Eagle Mountain
- Spencer Kyle, Saratoga Springs
- Derek Todd, Lehi
- Gary Hill, Bountiful
- JJ Allen, Clearfield

# Round Table Topics

- Emergency Operations Plans: Is yours stale?
- Training: Management Team and rounding up the troops?
- Employee Personal Preparedness
- Communication: Social Media, Press Issues, and information sharing
- Technology: What happens when the power goes out?
- Volunteer Issues:
- Mutual Aid
- Roles: Who does what when things go wrong?
- Restoring Trust Post Disaster: Mitigation, Response, and Recovery
- Coping Strategies

# Emergency Operations Plan

- Develop an Emergency Operation Plan
- Exercise and train using your plan
- Get Training for yourself
- Modify your plan as appropriate
- Employee “family planning”

# Emergency Operations Plan

- Work on scenarios that are outside the realm of possibility. (Multiple Emergency Events)

# What's in your "Go Bag"?



# Communication

- Transparency in problem solving
- Regular meetings with residents.
- Feed the Beast! (Media, Social Media, Information is King, Press)



# Technology

- What do you do when the stone age happens?

# Volunteers

- Coordination
- Feeding the masses
- Safety concerns
- Proper attire (bikini, shorts, flip flops)
- Documenting time (\$\$\$)
- Getting out the message
- Heavy equipment (personal)



# Mutual Aid

- Emergency acquisition
  - Forgiveness vs. permission

# Role Clarification

- Policy group training

# Restoring Trust

# Coping Strategies

- Realistic expectations of self and others
- Physical limitations
- PTSD - Every time it.....
- Stress
- Family Needs
- Delegate, can I do that?
- Staff burn out



# Questions/Comments?

Additional Information...

<http://www.fema.gov/>



**ICMA**  
99<sup>TH</sup> ANNUAL CONFERENCE  
**BOSTON**  
**NEW ENGLAND**   
  
**September 22-25, 2013**