

Smart Government

Christopher Thomas

Esri

Director Government Markets

Federal, State, and Local

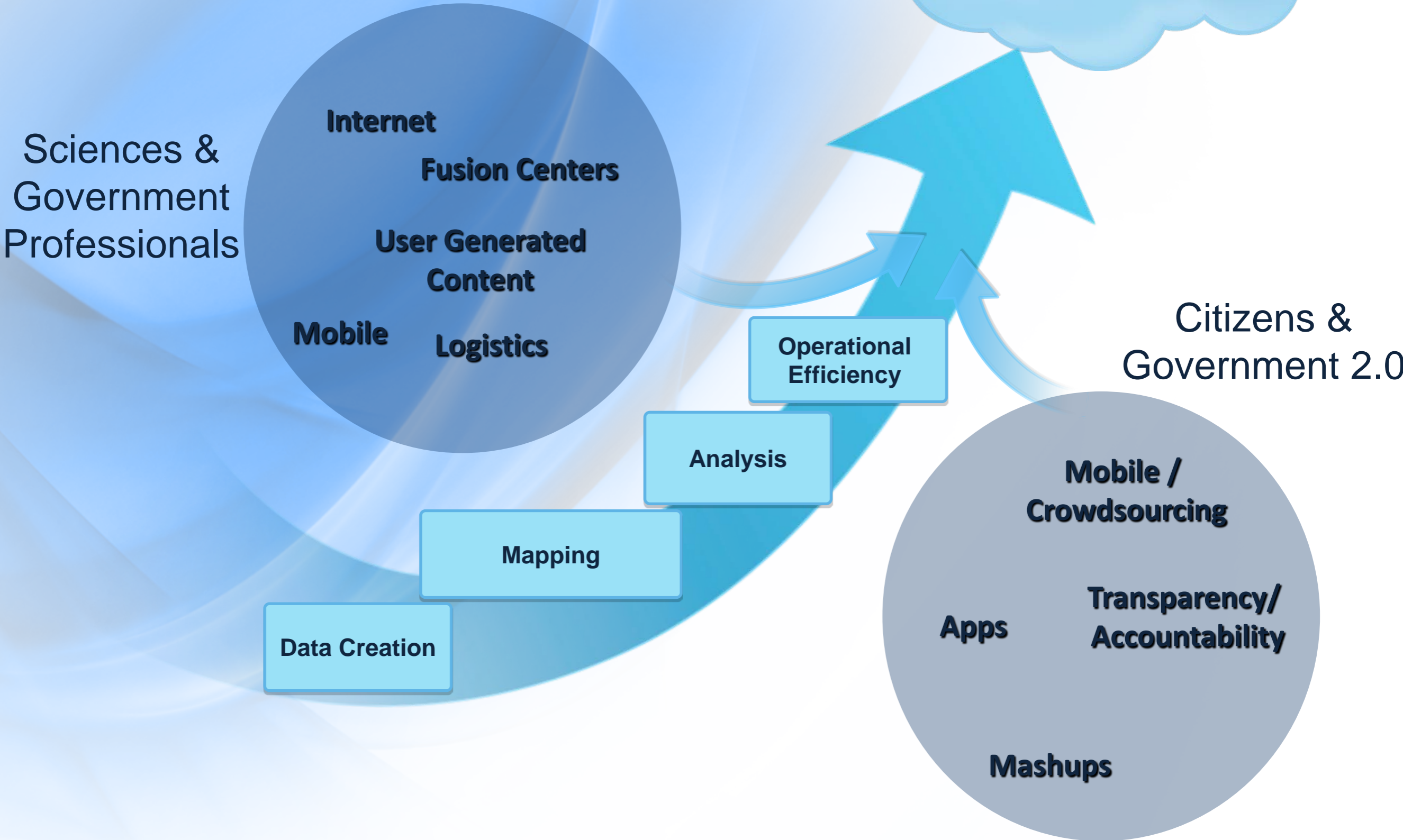




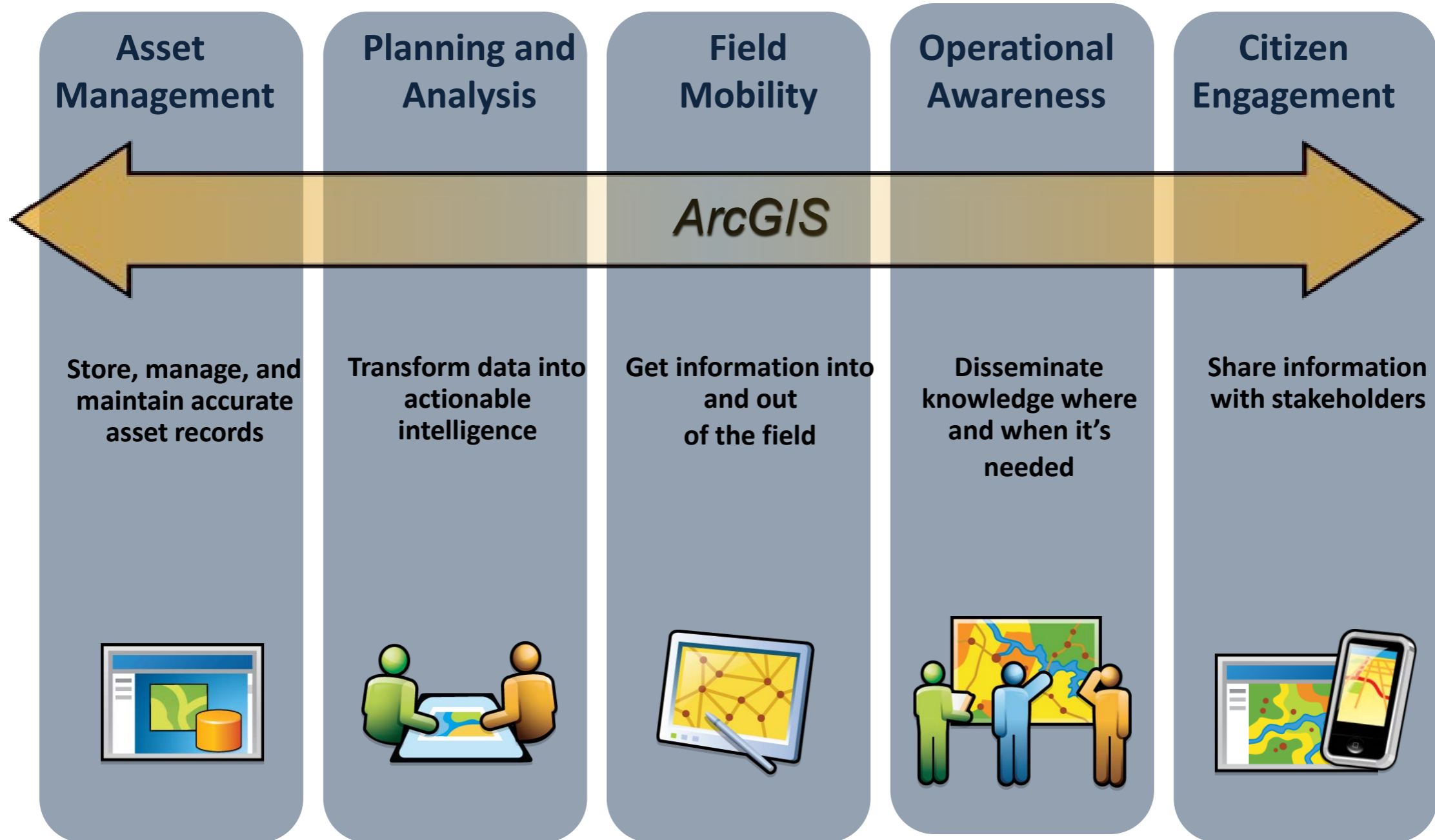
Can Government
Create a Following?



GIS Applied- A Long History



Common GIS Deployments







A photograph of a road with yellow double lines receding into the distance. In the foreground, a pile of silver forks lies on the left yellow line. The background is blurred, showing trees and a clear sky.

**Where Life
Takes Us**

A word cloud of technology and social media terms is overlaid on a background of a laptop. The words are in various sizes and colors, primarily in shades of green and white. The most prominent words are 'Gov 2.0', 'social media', 'transparency', 'Big Data', and 'Pinterest'. Other visible words include 'Twitter', 'RSS', 'Youtube', 'API', 'Participation', 'Efficient', 'Blog', 'wiki', 'Crowd IQ', 'map', 'Government', 'RSS', 'Apps for Democracy', 'cloud computing', 'Pod Casting', 'Open', 'accountability', 'Web 2.0', 'collaboration', 'Data.gov', and 'Facebook'. The laptop in the background is dark blue and has some faint text on its screen.

RSS Youtube
Participation Efficient API Twitter
wiki Gov 2.0 Crowd IQ Blog
Government RSS Apps for Democracy map
cloud computing transparency
social media Pod Casting
Open accountability
Web 2.0 collaboration Data.gov
Pinterest Big Data Facebook

Public Information



Citizen Feedback



Citizen Engagement



The Gov 2.0 Shift

The Value of Place

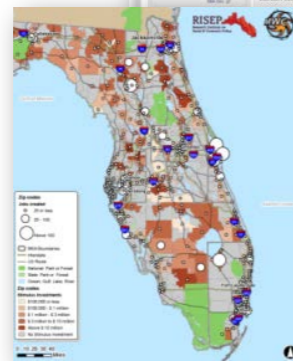
Transparency, Accountability, & Citizen Engagement

State Expenditures



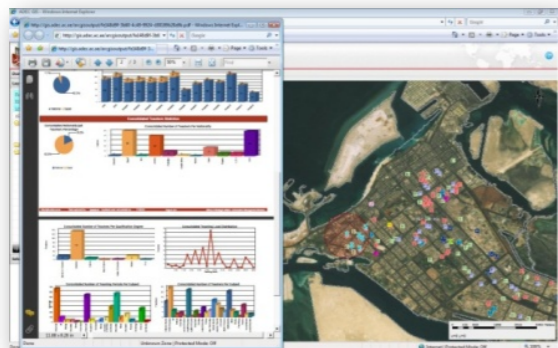
Maryland

Stimulus and Jobs Creation



Florida

School Evaluation



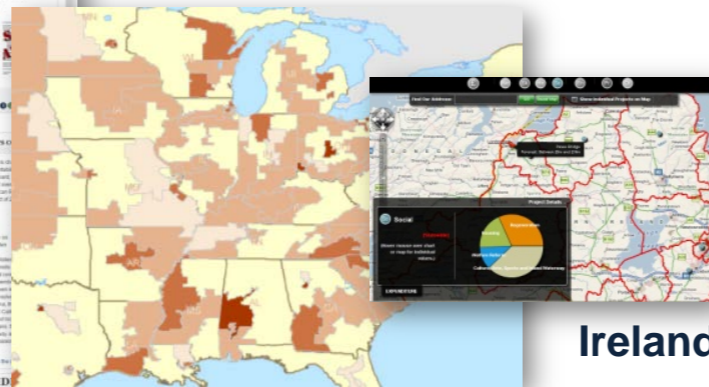
Abu Dhabi

Stimulus Funding



Recovery.gov

TARP Mapping



United States

Ireland

Government Portals



Data.gov, USA



Lombardy, Italy



State of Ohio



Geodata.gov



Can Government Find a Following?

The New App Economy



What is a Following?

Popular

Interesting

Constant
Updates

Community

What we hear from governments

“We can not afford to do Gov 2.0”

We must do this

“We do not want to develop applications that opens up the government to more critics”

How will we keep up with Workloads?

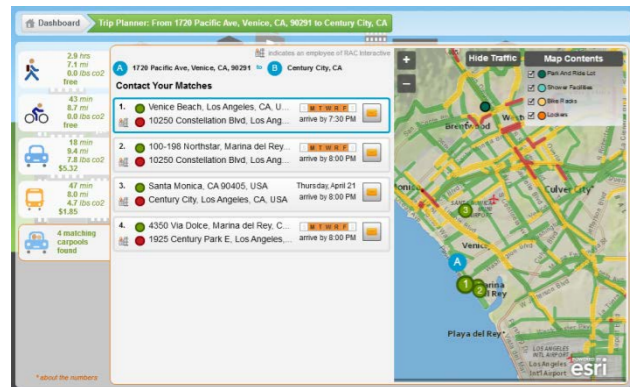
This is a Fad!

The social media part was easy

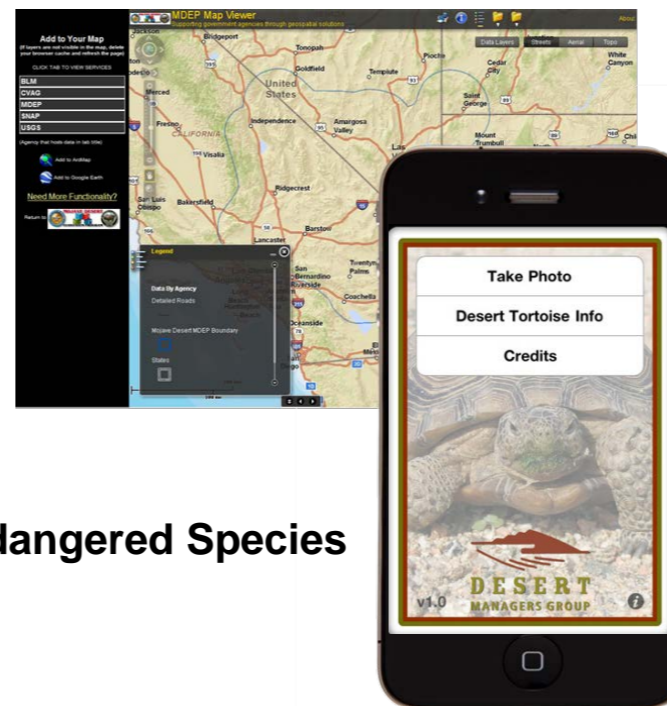


Can Government Create A Following?

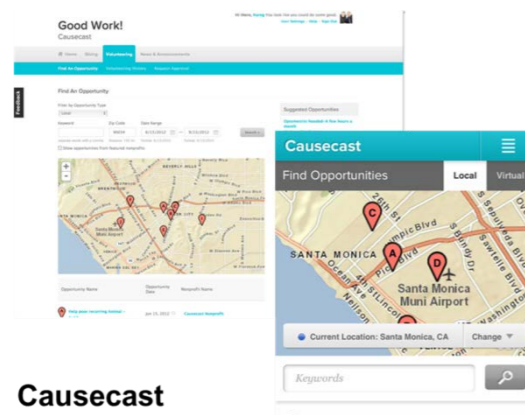
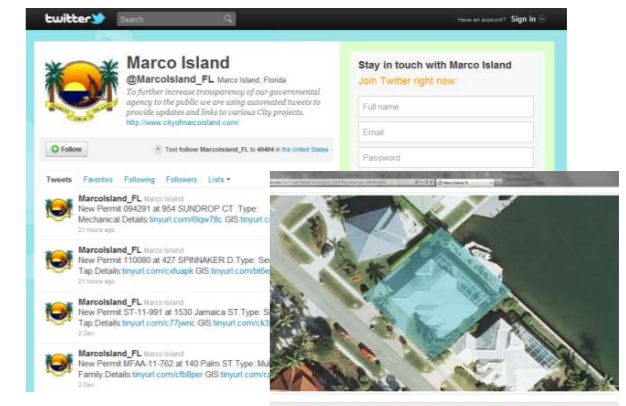
Volunteerism



Citizen Scientists



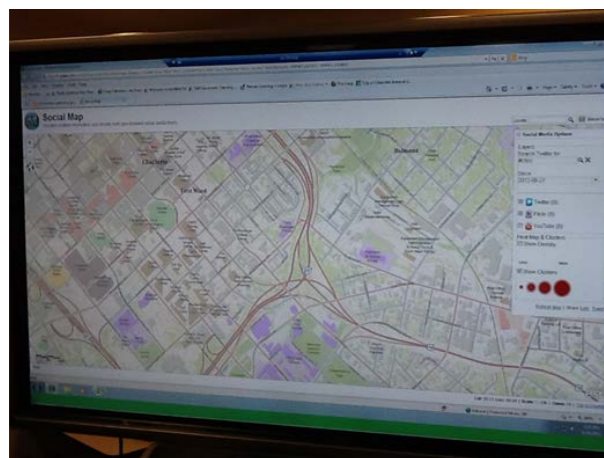
Public Information



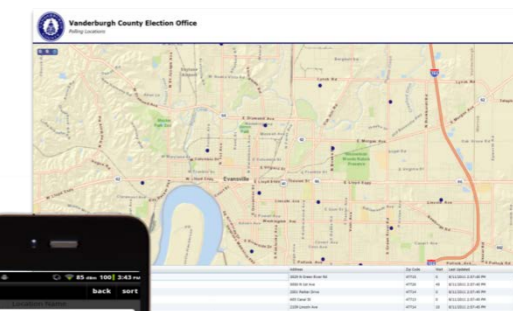
Endangered Species

Public Information

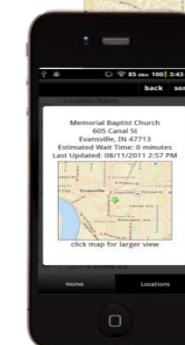
Unsolicited Comment



Solicited Comment



Polling Place Locator

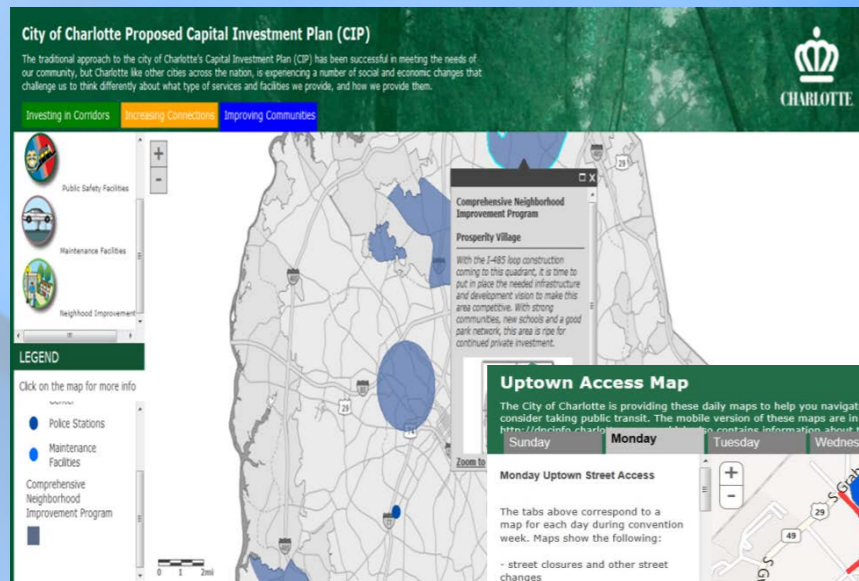


Public Input

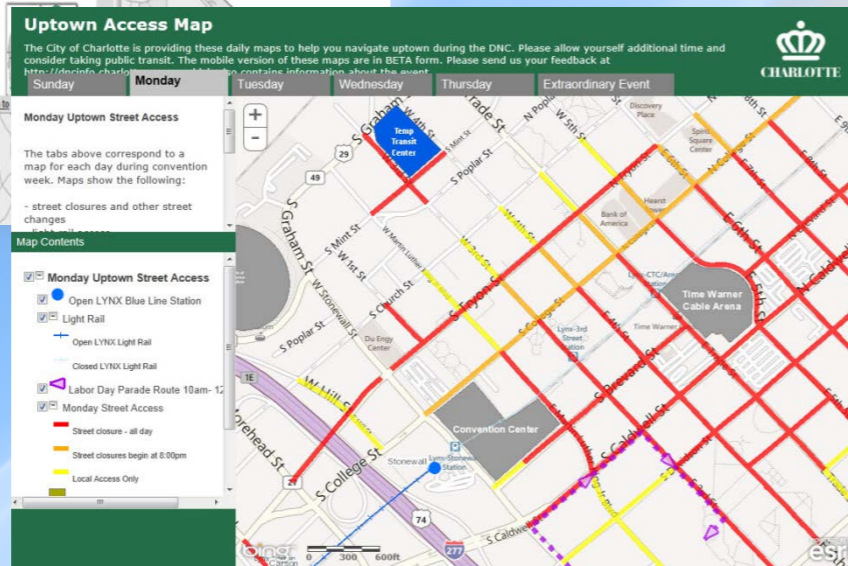
Public Input

Simple Applications with a GIS Advantage

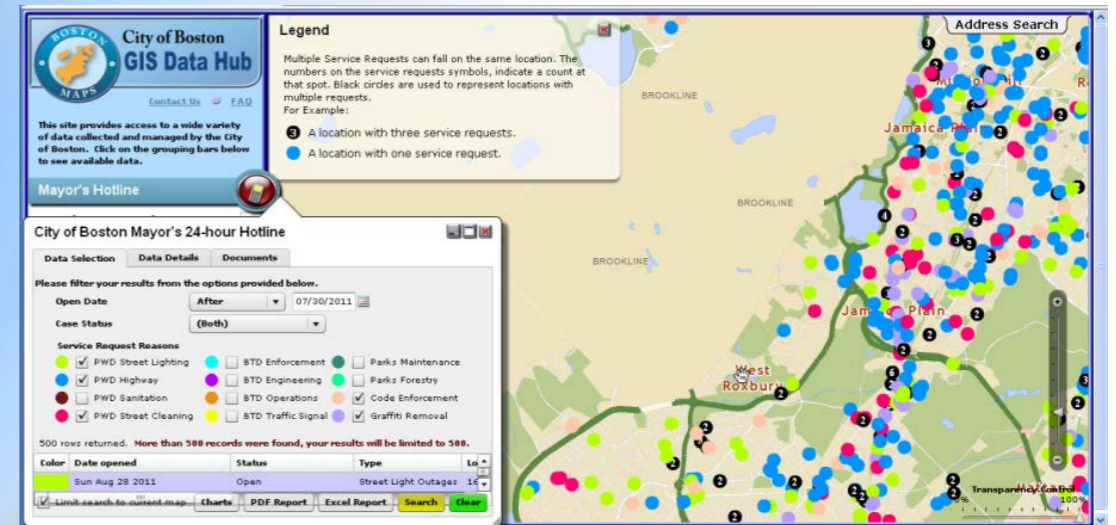
Key Information Products



City of Charlotte, NC
Capital Projects



City of Charlotte, NC
Road Closures
2012 Democratic National Convention

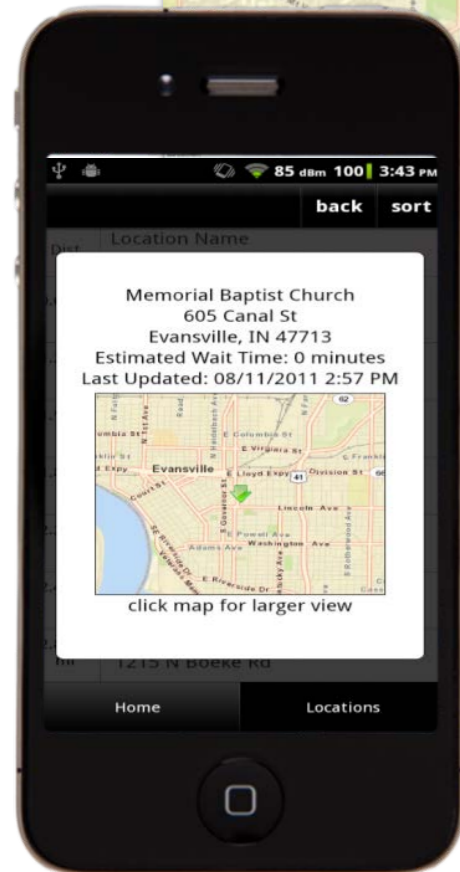
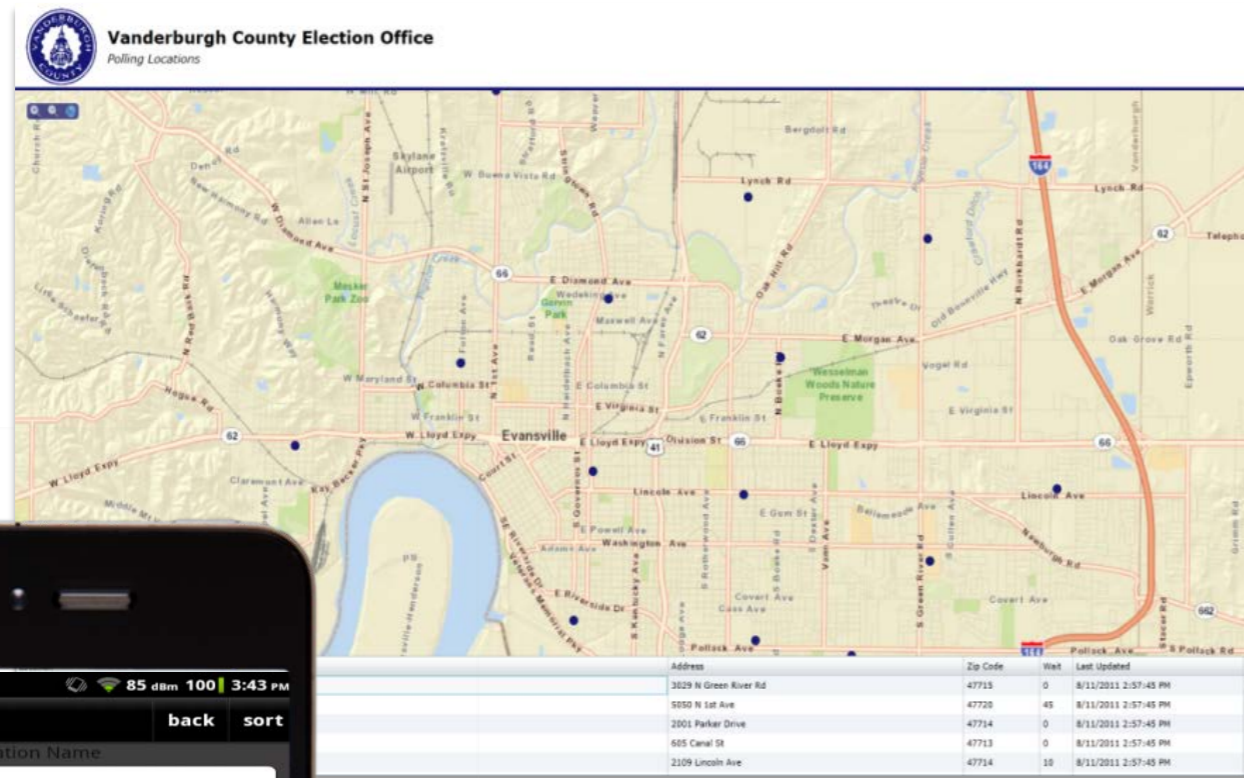


City of Boston
Mayors Hotline



Singapore
OneMap

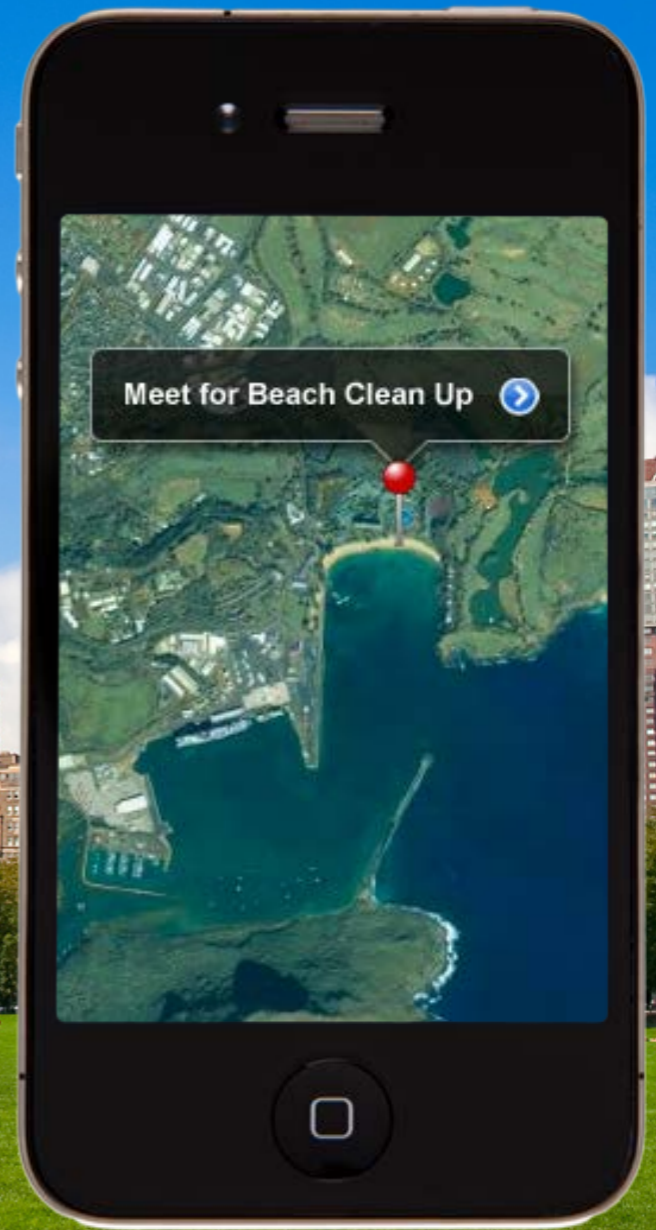
Citizen Enablement

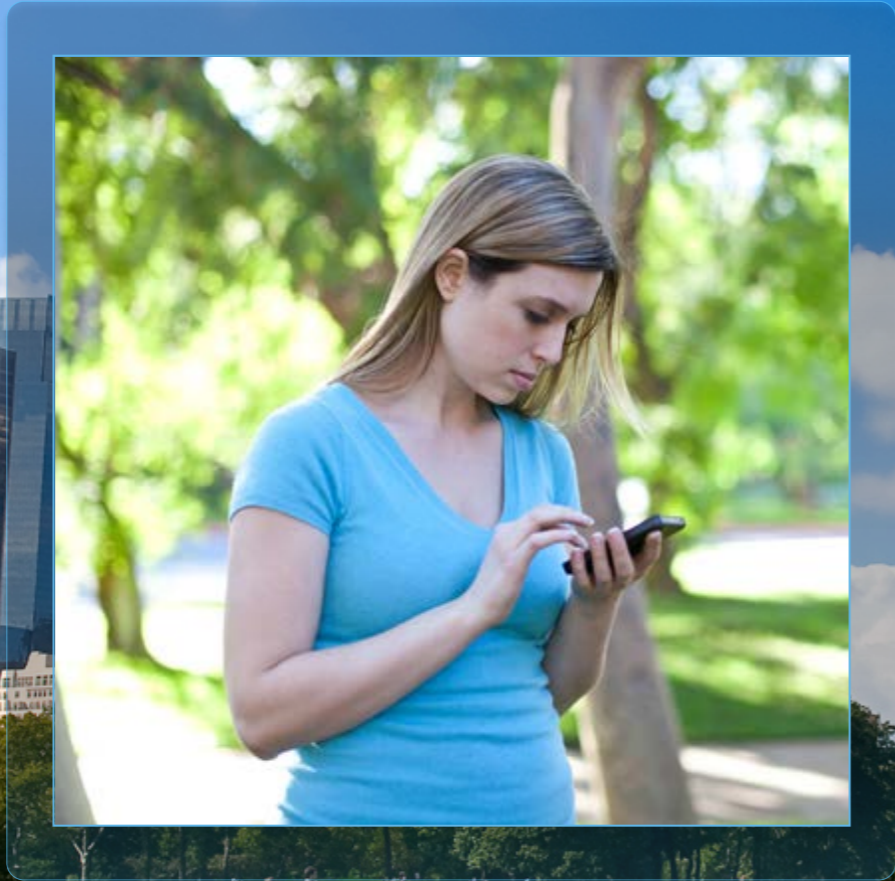


Vanderburgh County, IN
Polling Place Locator

Citizen Goal:
To Answer A Question

Government Goal:
Consolidated Services
Improve Service
Return on Investment
*\$85,000 per Election





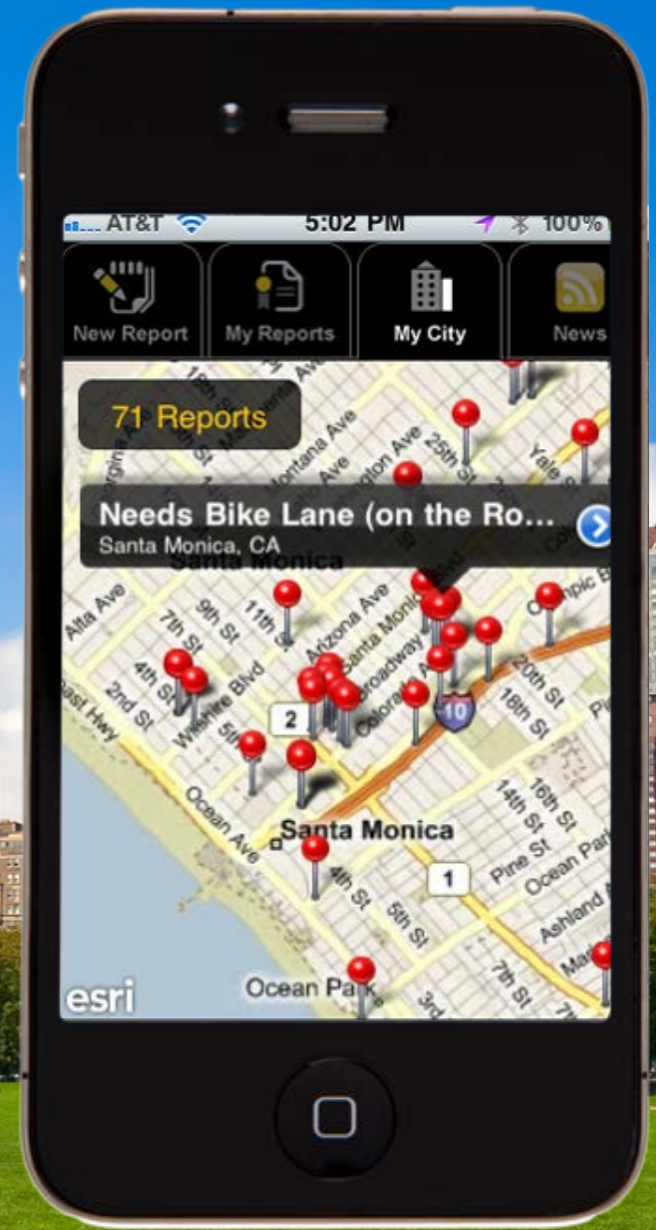
AT&T 8:43 PM 55%

FC Federal Communications Commission BROADBAND.GOV

Mobile Broadband Test In Progress...

Download Speed	3.01 Mbps
Upload Speed	0.50 Mbps
Latency	0 ms

Home icon, Green arrow icon, Globe icon



Market Entries

Disruptive

Start Ups

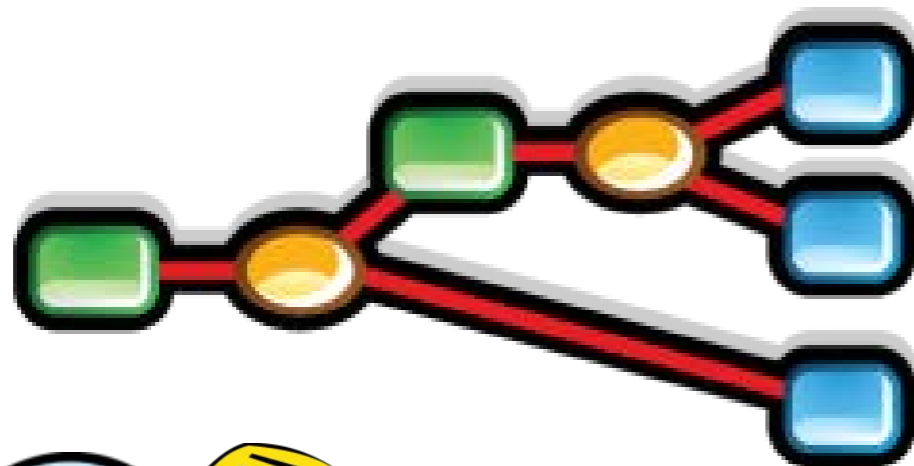
Social Minded

Not For Profits

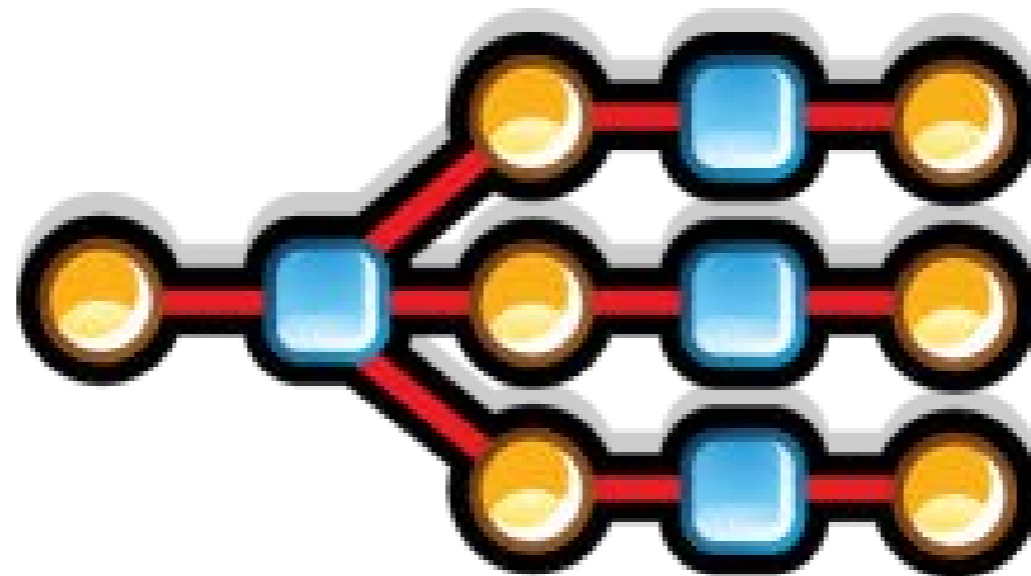
Competitive Edge

Traditional Partners

Embracing Repeatable Patterns



- Influences
- Linking GIS to Business Problems
- Recognition
- Linking GIS to Workflows



Repeat Success

Citizen Engagement Trends

Public Information

Public Reporting

Unsolicited Comments

Public Input/Solicited Comment

Citizen as a Sensor

Volunteerism

Citizen as a Scientist

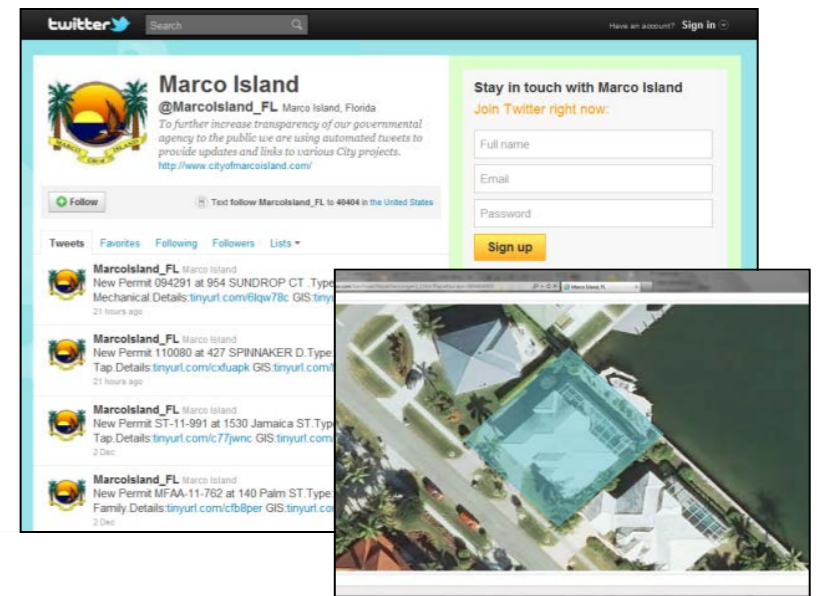
Public Information



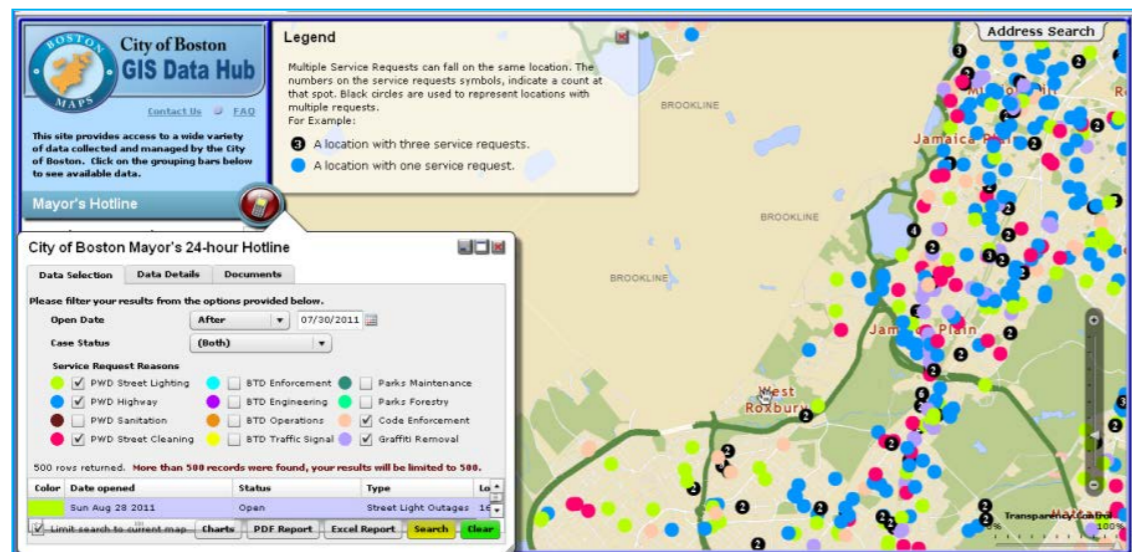
Indianapolis, Illinois
Request Indy



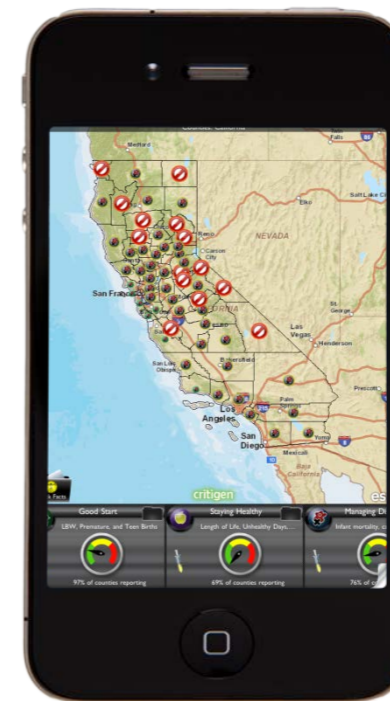
Grand Junction, CO
Community Development
Tweet Alerts



City of Marco Island, FL

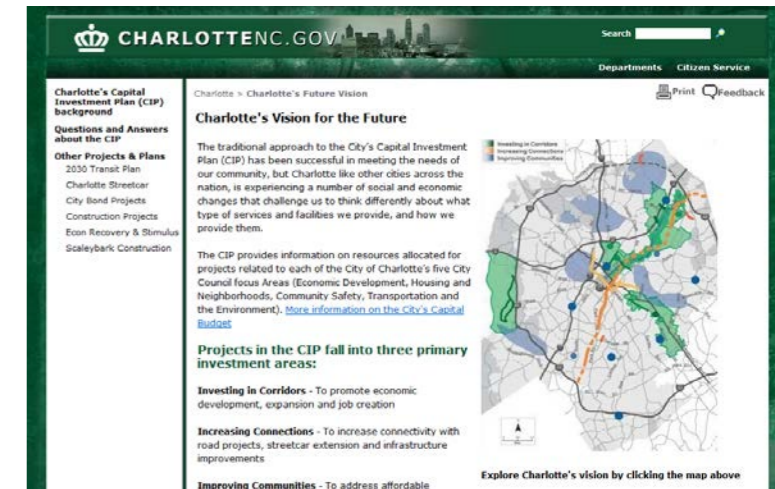
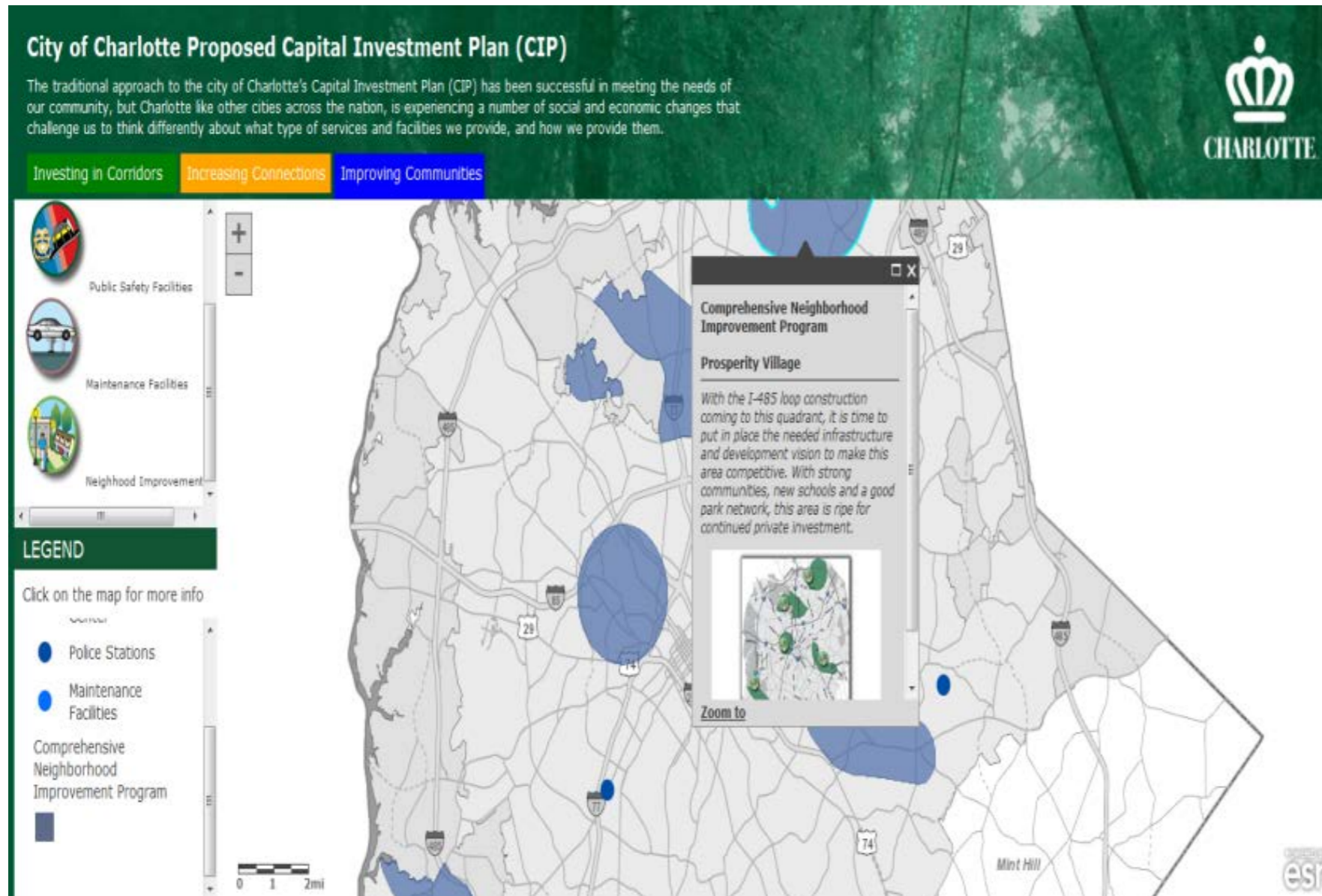


City of Boston – Mayor's Hotline

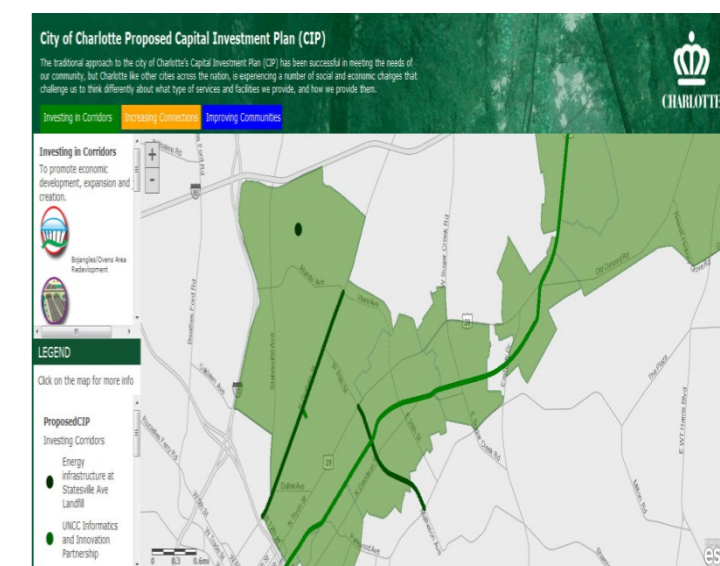


Public Health Indicator

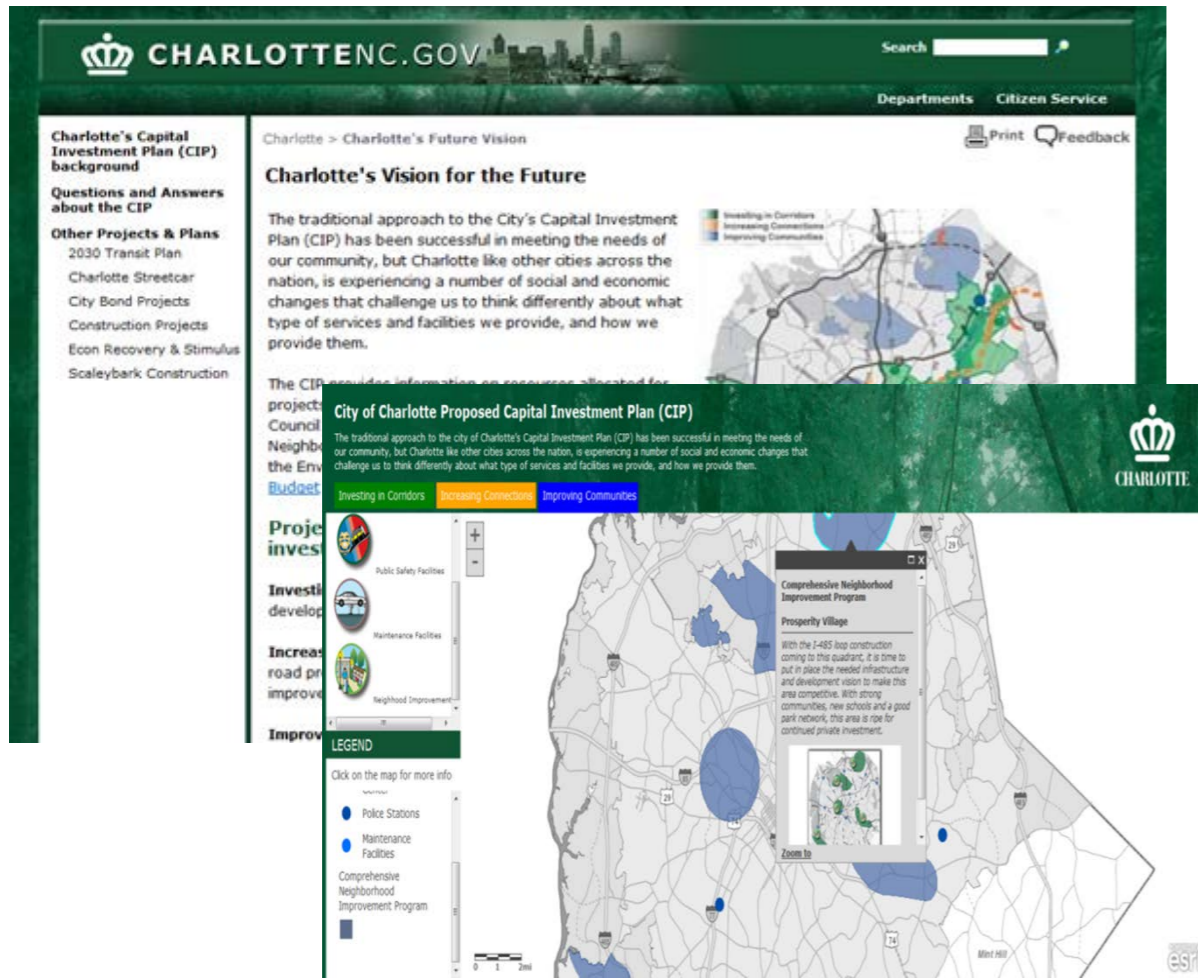
Maps with a Message



- Key Information Products
- Information Pattern with Story Telling



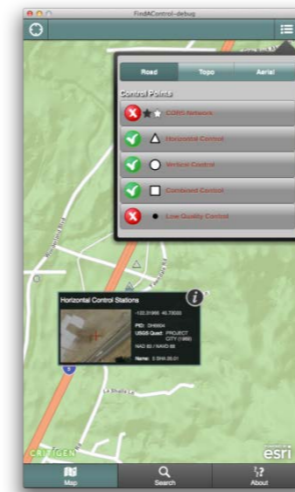
Public Information



City of Charlotte, NC
Capital Project Planning



Buy Local



Survey Monuments

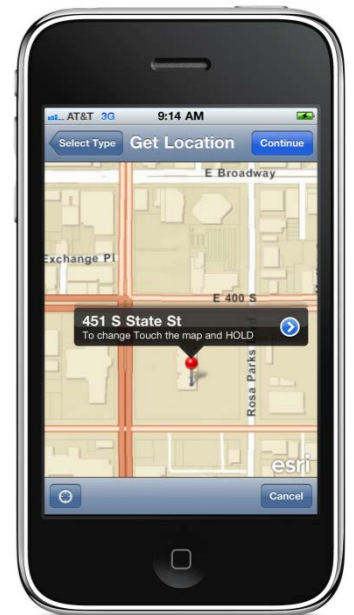
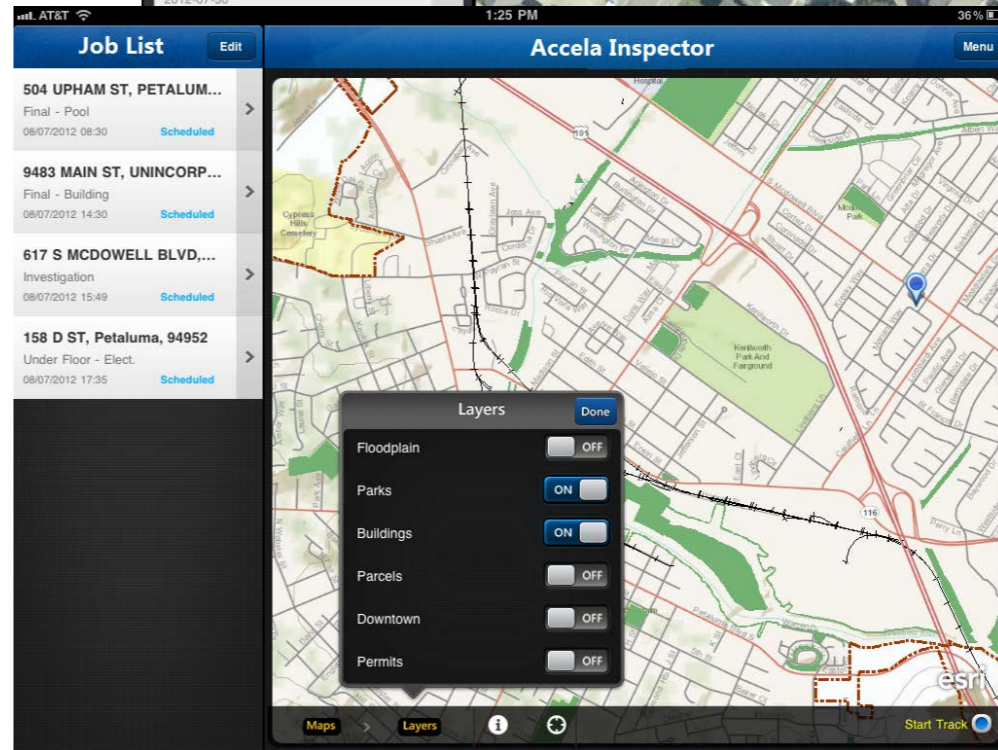
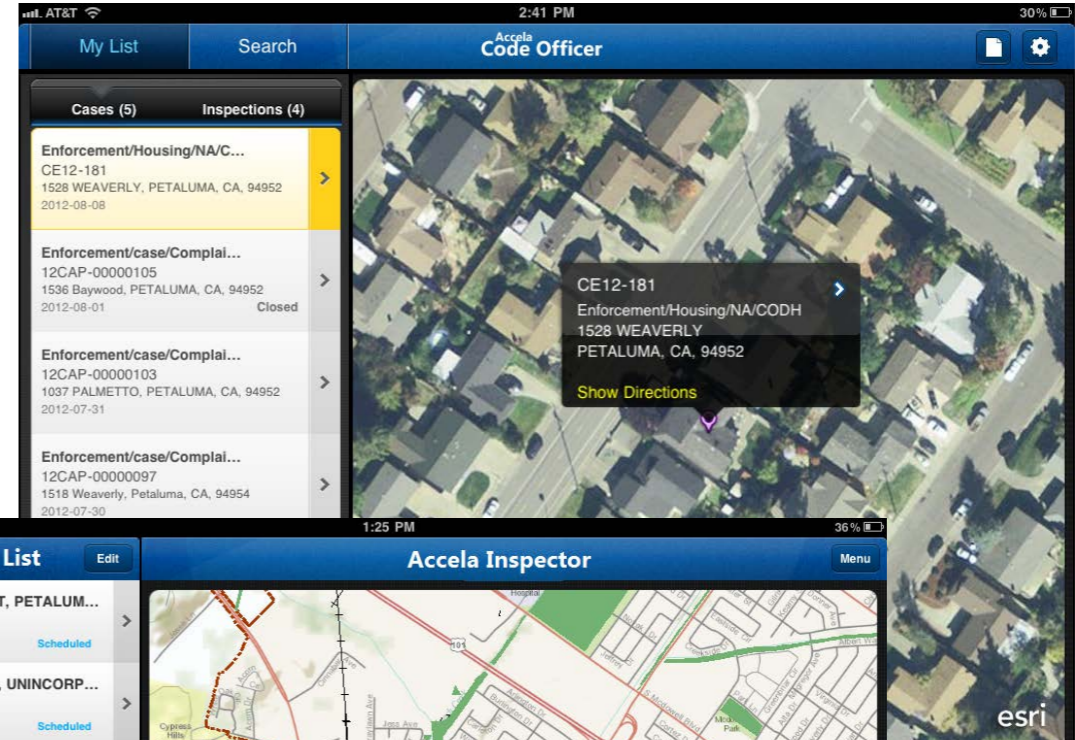


Public Health Indicator

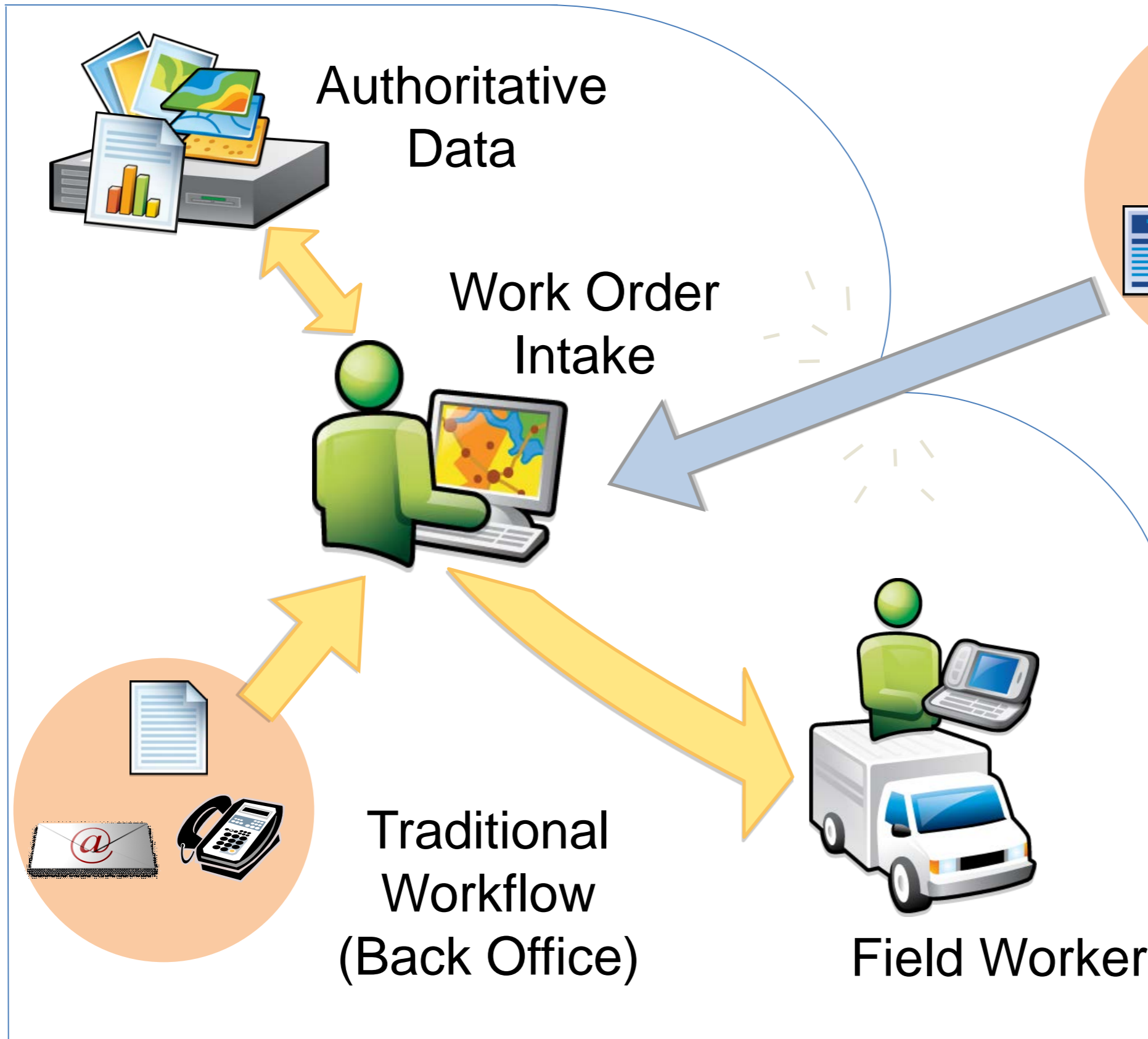


New Mexico Roads Mobile
511

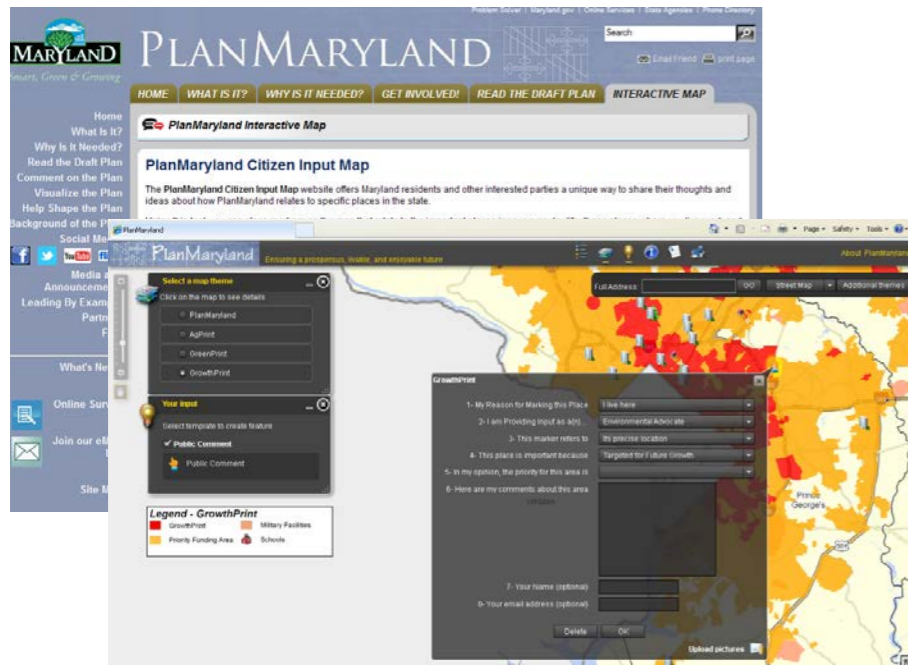
Public Reporting



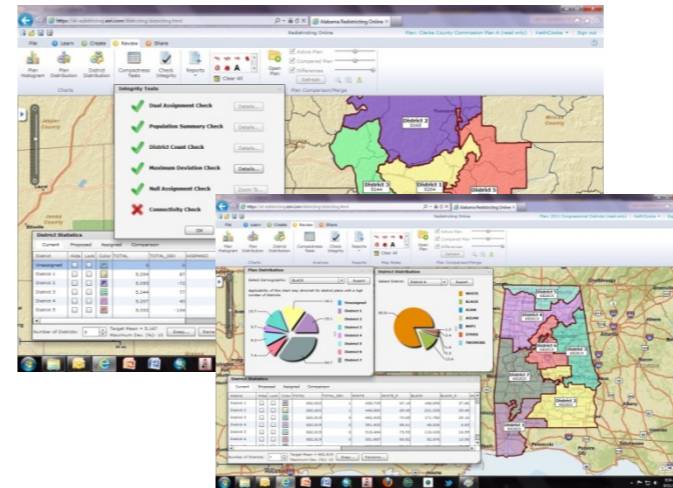
Citizen Engagement



Public Input/Solicited Comment



State of Maryland
Plan Maryland



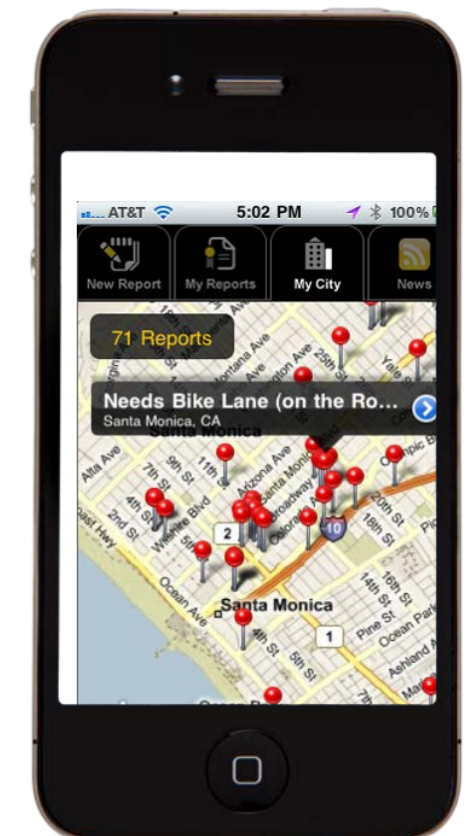
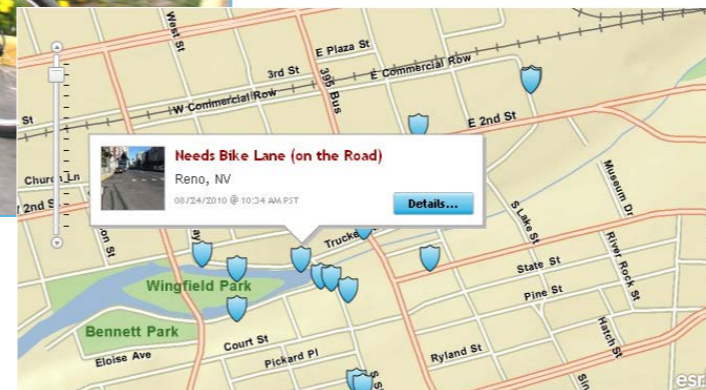
State of Alabama Redistricting



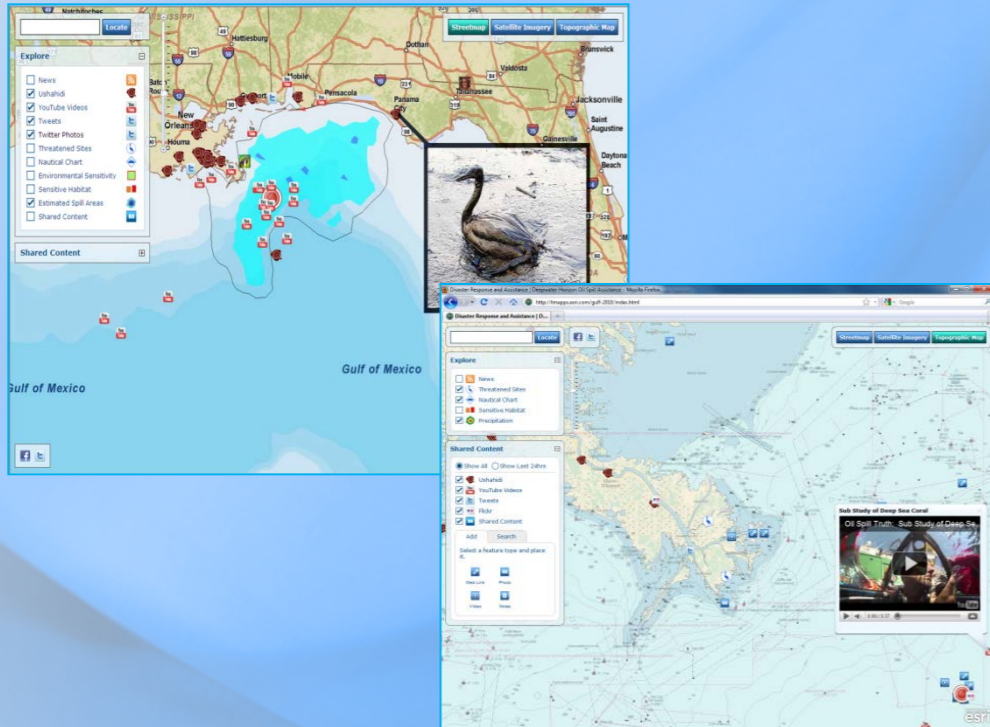
State of Utah Redistricting



Reno, NV



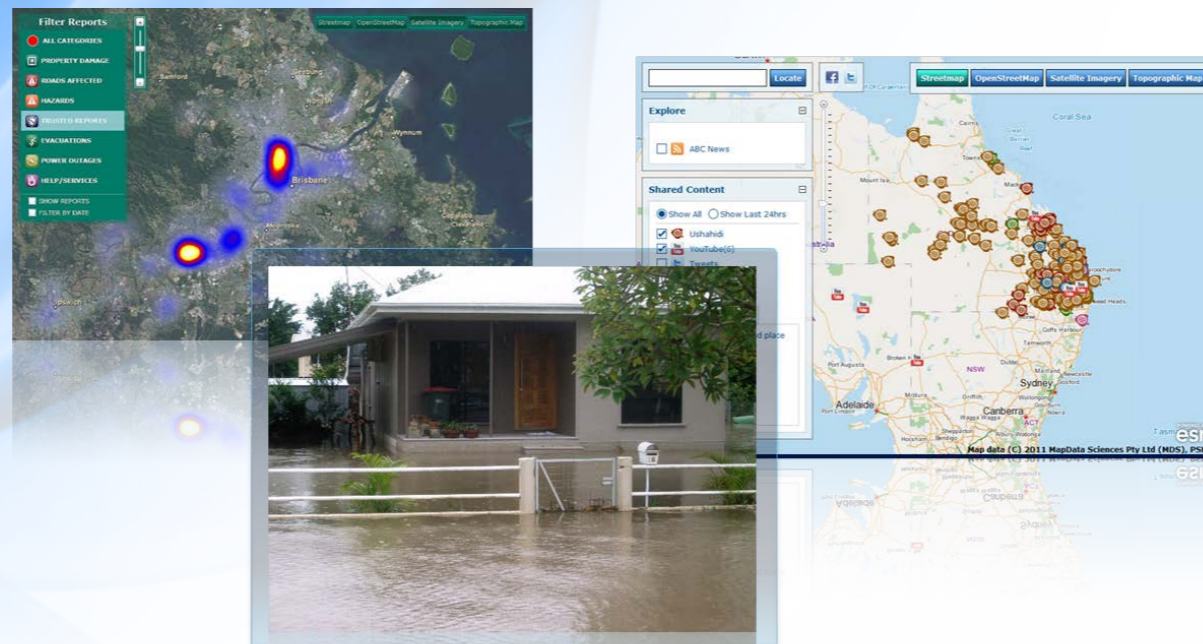
Citizen as a Sensor



Gulf Oil Spill

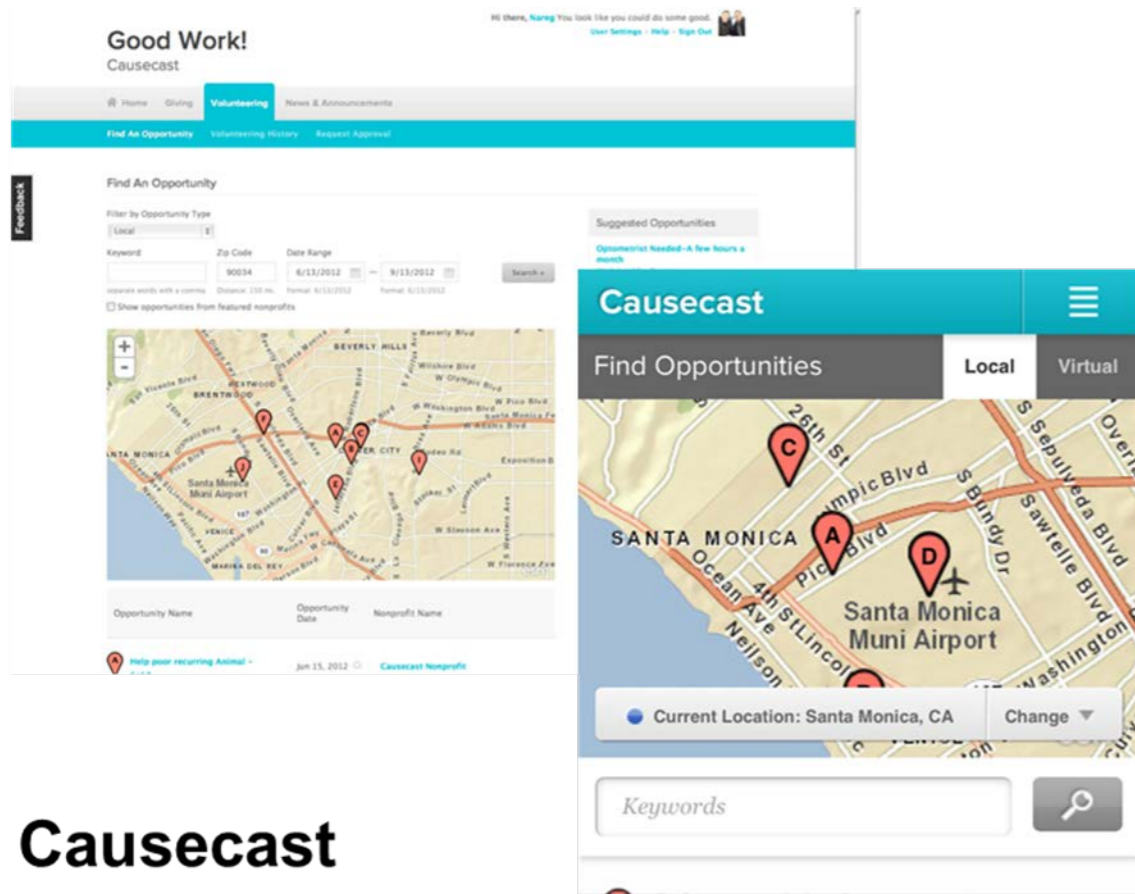


Crime Reporting

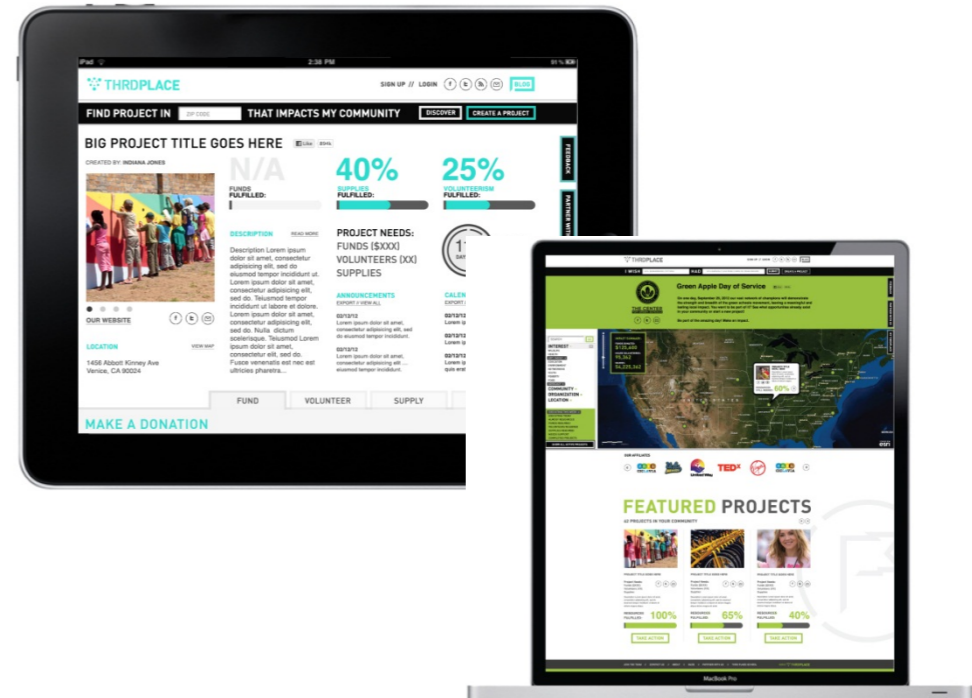


Australia Floods

Volunteerism



Causecast



Third Place



Multiple States

Lilly Day of Service
Monumental Affair

THANK YOU
for supporting
ADOPT-A-BLOCK

Get Your Company Involved!

Check out our Adopt-A-Block neighborhood map!

(if typing in your address in the search engine, include "Indianapolis" to zoom to your block location)

View Larger Map

WORDS FROM THE STREET: Read how Adopt-A-Block has transformed neighborhoods, and lives.

TWITTERUPDATE
FOLLOW @kibiORG ON TWITTER

larainindy: RT @kibiorg: Happy first day of Spring!!! RT if you keep Indianapolis beautiful!
2 HOURS AGO.

Dreamapolis: "@kibiorg: Happy first day of Spring!!! RT if you keep Indianapolis beautiful!"
3 HOURS AGO.

vtdodr: RT @Flat12_Weaver: RT @kibiorg: Happy first day of Spring!!! RT if you keep Indianapolis beautiful!
4 HOURS AGO.

City of Indianapolis

Volunteerism

Citizen Enablement

Dashboard Trip Planner: From 1720 Pacific Ave, Venice, CA, 90291 to Century City, CA

2.9 hrs
7.1 mi
0.0 lbs co2
free

43 min
8.7 mi
0.0 lbs co2
free

18 min
9.4 mi
7.8 lbs co2
\$5.32

47 min
8.0 mi
4.7 lbs co2
\$1.85

4 matching carpools found

Contact Your Matches

1. Venice Beach, Los Angeles, CA, U...
10250 Constellation Blvd, Los Ang... arrive by 7:30 PM
2. 100-198 Northstar, Marina del Rey...
10250 Constellation Blvd, Los Ang... arrive by 8:00 PM
3. Santa Monica, CA 90405, USA
Century City, Los Angeles, CA, USA Thursday, April 21 arrive by 8:00 PM
4. 4350 Via Dolce, Marina del Rey, C...
1925 Century Park E, Los Angeles,... arrive by 8:00 PM

esri

*about the numbers

City of Santa Monica, CA

RideAmigos

VirtualTMO Transportation Management Toolkit

Client Manager Client: The Sample Client Survey: The Sample Client's Building

Responses Reports Heatmap

esri

rideamigos.com a RideamigosCorp project

public events about contact

Symbiosis Gathering Pyramid Eclipse

Date/Time: 05-16-2012 to 05-22-2012
Location: Pyramid Lake Indian Reservation, Pyramid Lake, NV 89510, USA
Additional Info: For more information please see http://www.pyramidclipse.com

Share this page:

Click here to easily embed our rideshare widget on your website!

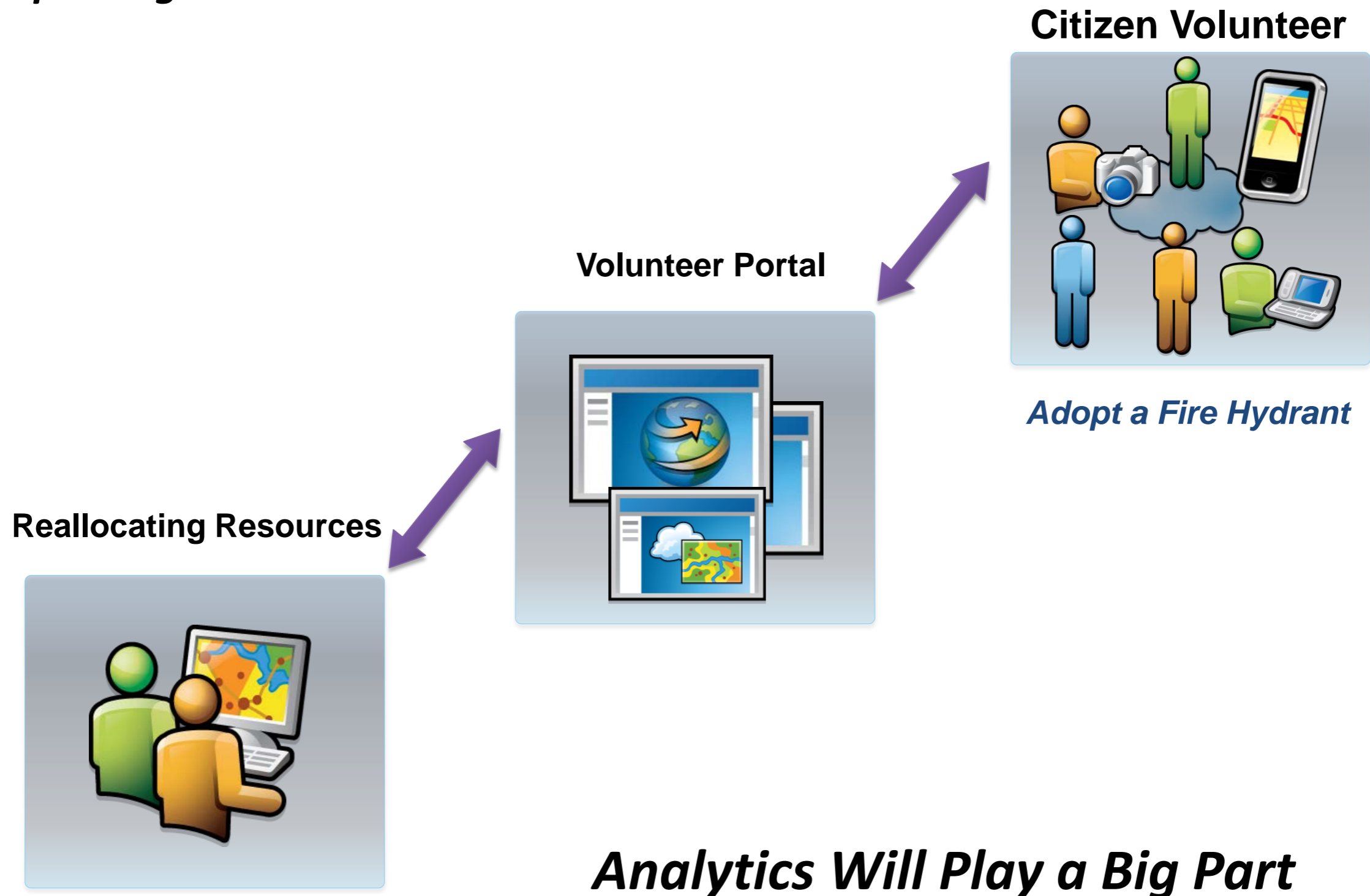
contact other riders

showing rides 101 - 156, out of 156

Posted	Distance (from event)	Traveling From	Ride or Drive	Contact
02/09/12	29.9 mi.	Reno-Tahoe International Airport (RNO), 2001 Plumb Ln, Reno, NV 89502	Looking for Ride	✉
<p>Additional Info: I would be flying into the Reno airport the day before the festival starts- May 16th. It would either be me or me +1. Would just need a ride to the festival (possibly back to the airport on the 23rd after it ends too)- would chip in for gas. Even would be down to all throw in on a rental car with some other people flying in from out of town for the festival. Good energy! :)</p> <p>Return Trip: Could use a ride back to the Reno airport when the festival ends- willing to do it the day it ends or the day after. Again, will throw gas money, laughs, smiles, good energy!</p>				
02/15/12	29.9 mi.	Reno-Tahoe International Airport (RNO), 2001 Plumb Ln, Reno, NV 89502	Looking for Ride	✉
<p>Additional Info: Will be flying into the airport on the 16th, looking for a ride from there to the festival. I'll be getting in around 10 PM, will be myself and possibly +1.</p> <p>Return Trip: Am more interested in using this to find a way to carpool from here to Lightning in a Bottle! I plan to have cash to throw down for gas, or if no one's driving directly there (though I feel like there will be some that are) even a ride to a major city that LIB has buses coming from. <3 !! Lots of love to share, can help drive (if you are comfortable) or at least pitch in with gas, etc. Coming out from Asheville for this, can't wait to share it ^.^</p>				
02/23/12	29.9 mi.	Reno-Tahoe International Airport (RNO), 2001 E Plumb Ln, Reno, NV 89502	Looking for Ride	✉
<p>Additional Info: I am flying in from Honolulu and flying solo. I am willing to go in on a rental car with some other people that are out of towners. I would also take a ride, but I have to hit up a friend in Reno to borrow some camping gear.</p> <p>Return Trip: I need a ride back to the Airport, maybe to my friend's house to drop off camping gear, though he may be at the festle too.</p>				

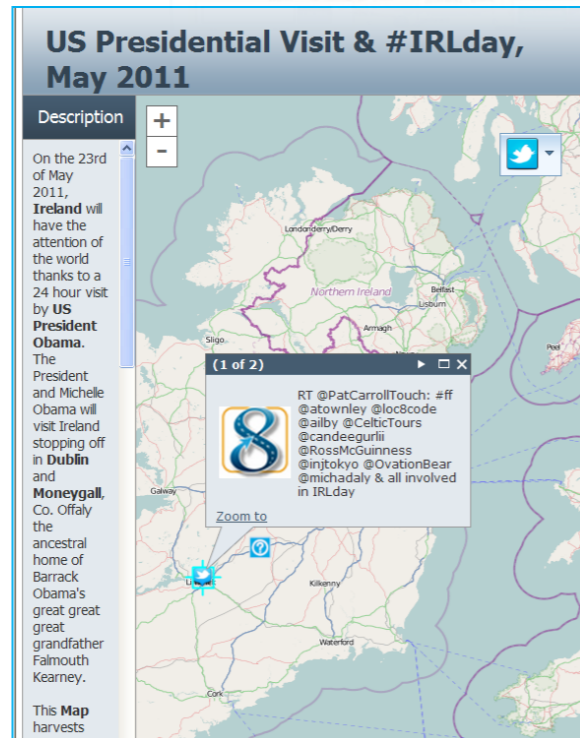
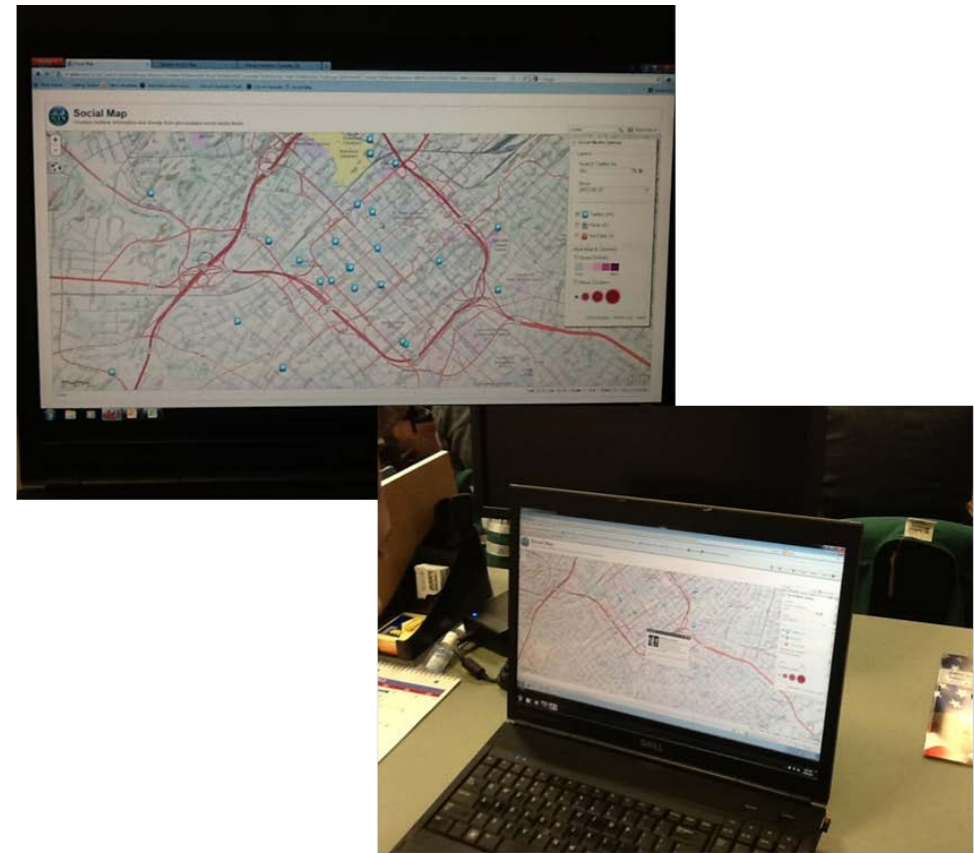
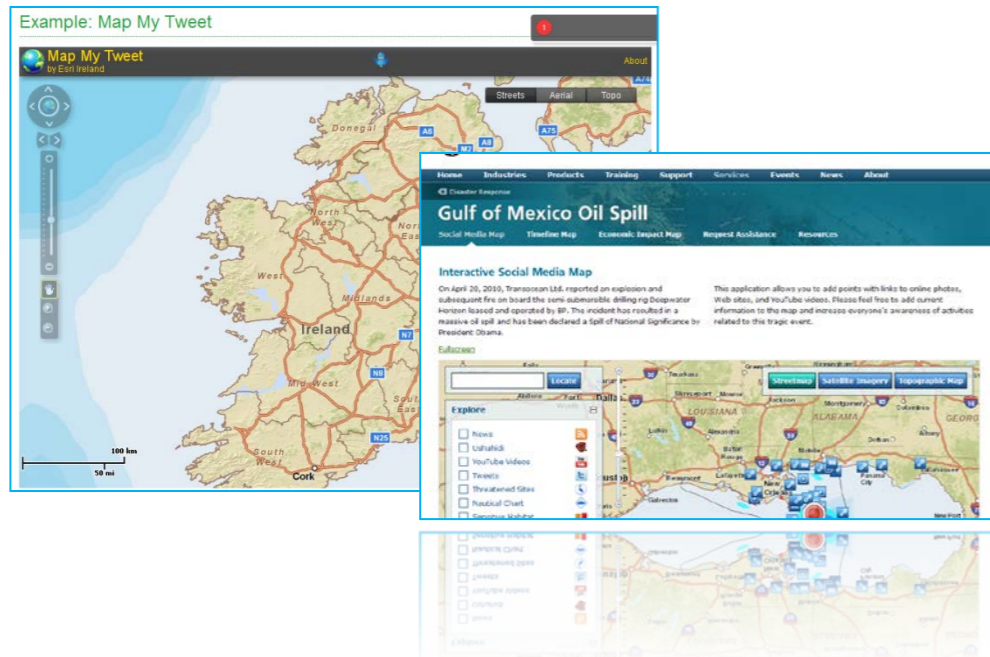
Citizen Engagement

Improving Core Services



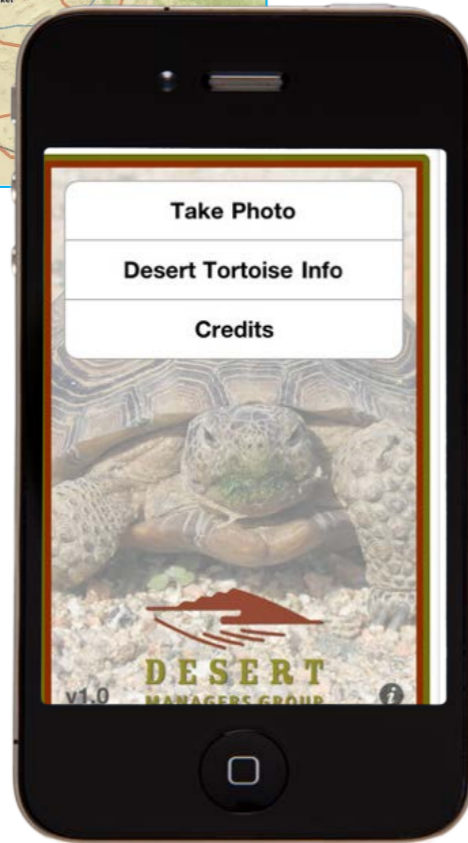
Unsolicited Comment

GIS and Social Media



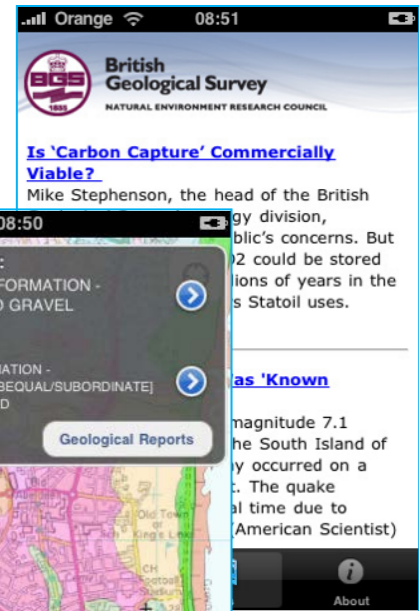
City of Charlotte, NC
Social Media Map
2012 Democratic National Convention

Citizen as a Scientist



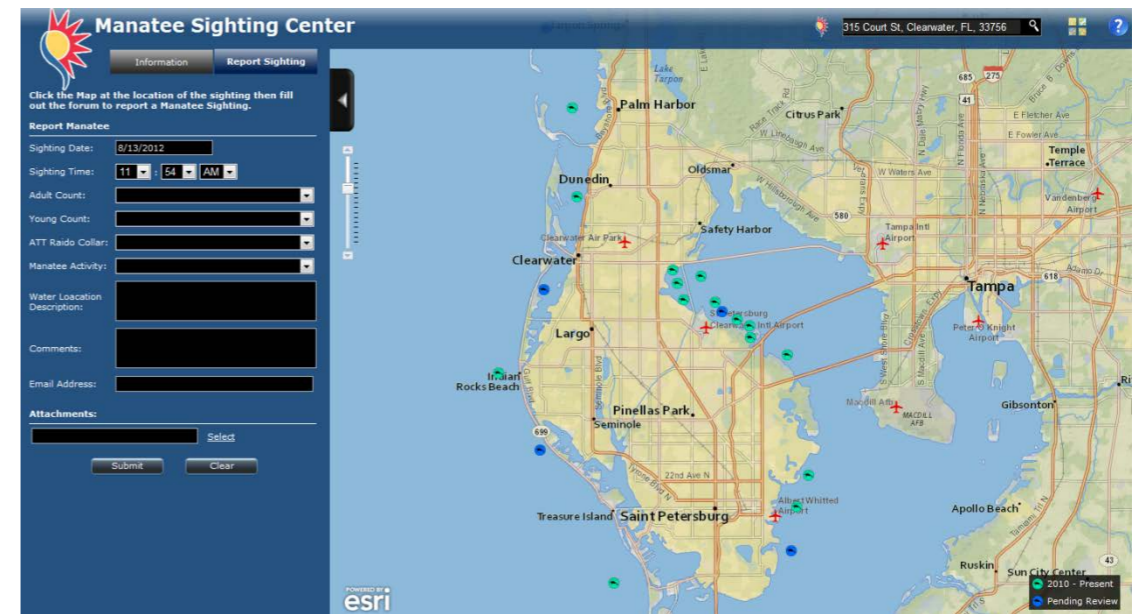
Mohave Data Ecosystem Program

British Geological Survey



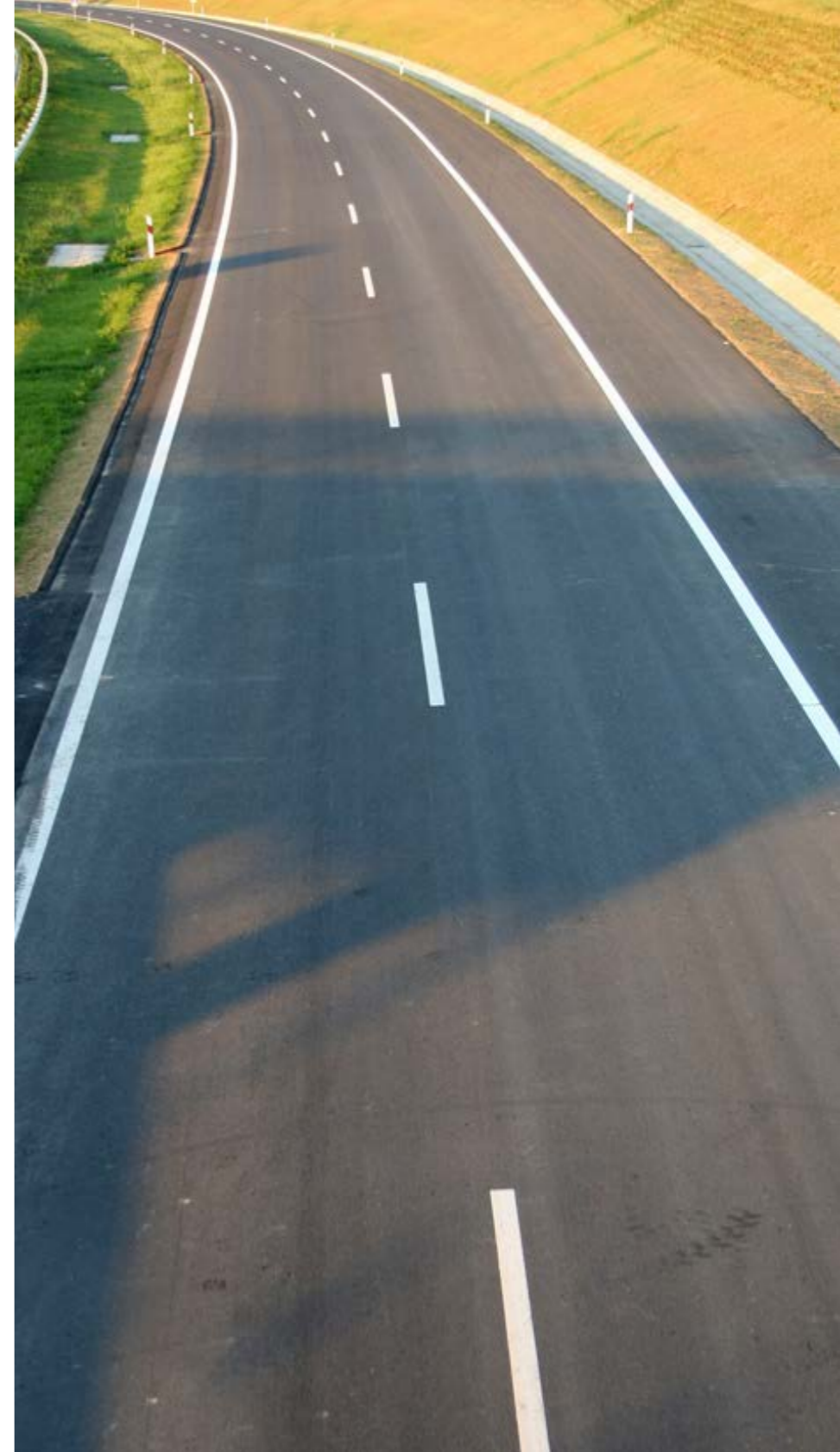
Mike Stephenson, the head of the British Geological Survey, says that the technology division, which is currently under public concerns. But the technology could be stored for millions of years in the UK's Statoil uses.

as 'Known' magnitude 7.1 earthquake occurred on the South Island of New Zealand. The quake was the largest time due to the American Scientist)



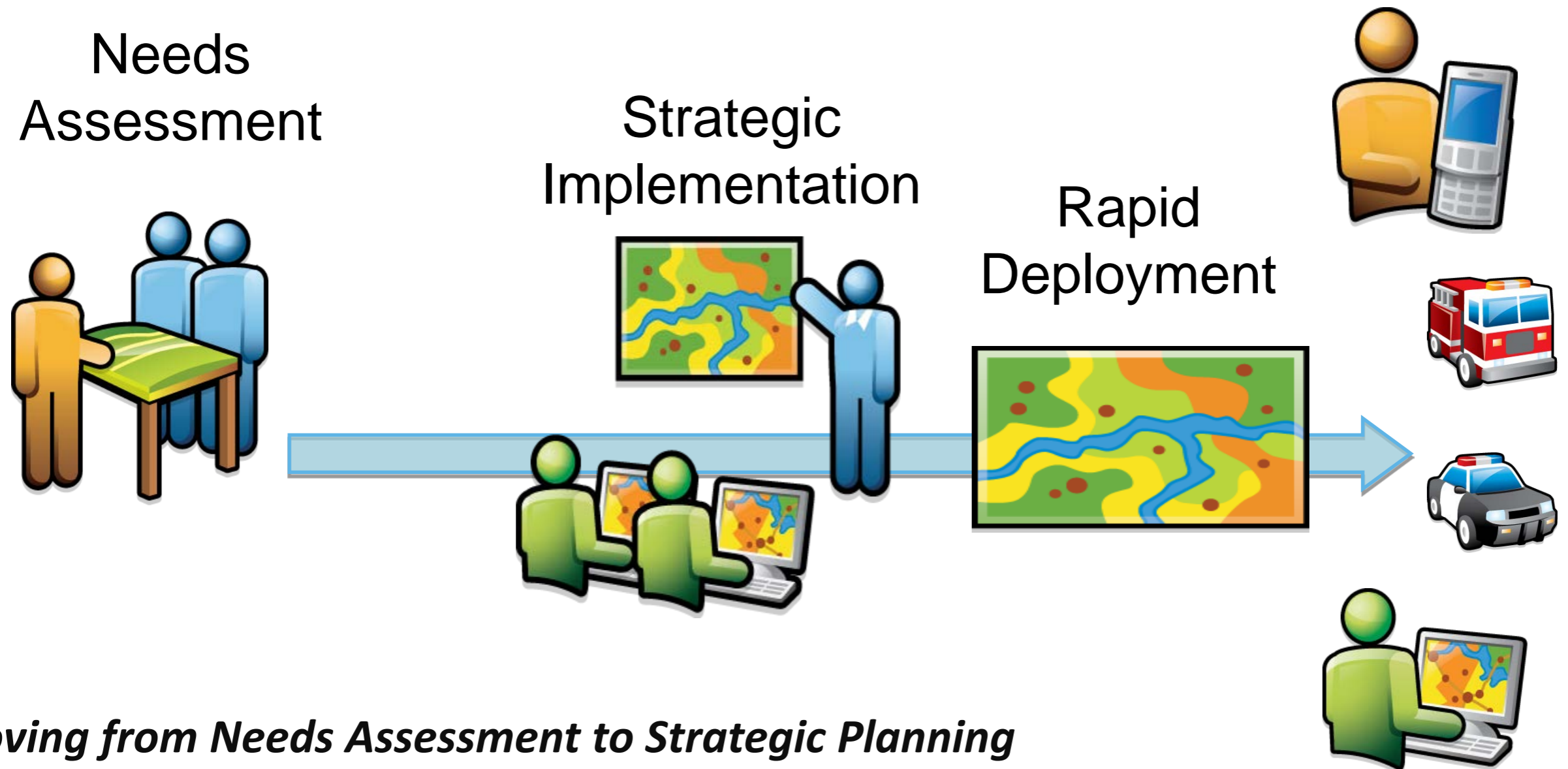
Pinellas County Manatee Sighting

Road Map for Success



Get Started

Moving from Needs Assessment to Strategic Planning



Moving from Needs Assessment to Strategic Planning

Modernize Key Information Products

Joe Aiello
Sangamon County Clerk
The following election results are available:

March 20, 2012 General Primary

April 5, 2011 Consolidated Election

February 22, 2011 Consolidated Primary

November 2, 2010 General Election

February 2, 2010 General Primary

April 7, 2009 Consolidated Election

November 4, 2008 General Election

February 5, 2008 General Primary Election

April 17, 2007 Consolidated Election

February 27, 2007 Consolidated Primary

Joe Aiello - Sangamon County Clerk
General Primary March 20, 2012

Election Results Viewer

Search: _____ Address _____ Select Precinct _____

Precinct	County	Party	Votes	%
President (R)			5582	
President (D)			2041	
Congressional Representative: 13th District (R)			1980	
Congressional Representative: 13th District (D)			1616	
Congressional Representative: 18th District (R)			3551	
Congressional Representative: 18th District (D)			458	
STEVE WATERWORTH (DEM)		DEM	244	53.2
MATTHEW A. WOODMANCY (DEM)		DEM	113	24.6
OVER VOTES (DEM)		DEM	0	0
UNDER VOTES (DEM)		DEM	102	22.2
Delegates: 13th District (R)			8966	
Delegates: 13th District (D)			9696	
Delegates: 18th District (R)			14341	
Delegates: 18th District (D)			2295	
Alternate Delegates: 13th District (R)			5970	
Alternate Delegates: 18th District (R)			14368	
State Senator: 44th District (R)			1837	
State Senator: 44th District (D)			508	
State Representative: 87th District (R)			1837	
State Representative: 87th District (D)			508	
State's Attorney (R)			5571	
State's Attorney (D)			2058	
Recorder (R)			5571	
Recorder (D)			2058	
Auditor (R)			5571	
Auditor (D)			2058	
Circuit Clerk (R)			5571	

Congressional Representative: 18th District (D)

SPRINGFIELD 005 County

Ballots Cast for Candidates (%)

STEVE WATERWORTH (DEM)	53.2% (244 votes)
MATTHEW A. WOODMANCY (DEM)	24.6% (113 votes)
OVER VOTES (DEM)	0% (0 votes)
UNDER VOTES (DEM)	22.2% (102 votes)

32 out of 32 Precincts Reported (100%)
4,161 out of 23,020 Voters Turned Out (18.08%)

Congressional Representative: 18th District (D) Select Political Contest

***** UNOFFICIAL RESULTS *****

Click Refresh/Reload frequently on this screen to get the latest results.

Republican Contested Races	The latest Cumulative Summary	Democratic Contested Races
President	0001-CAPITAL PRECINCT 1	13 th Congressional
13 th Congressional	0002-CAPITAL PRECINCT 2	16 th Congressional
Delegates 13 th Congressional	0003-CAPITAL PRECINCT 3	Delegates 13 th Congressional
Alternates 13 th Congressional	0004-CAPITAL PRECINCT 4	Delegates 16 th Congressional
Alternates 16 th Congressional	0005-CAPITAL PRECINCT 5	County Board - District 18
State Senate - 50 th	0006-CAPITAL PRECINCT 6	Precinct Committeeman
State Representative - 96 th	0007-CAPITAL PRECINCT 7	Write-Ins
State's Attorney	0008-CAPITAL PRECINCT 8	
Coroner	0009-CAPITAL PRECINCT 9	
Precinct Committeeman	0010-CAPITAL PRECINCT 10	
Write-Ins	0011-CAPITAL PRECINCT 11	
	0012-CAPITAL PRECINCT 12	
	0013-CAPITAL PRECINCT 13	
	0014-CAPITAL PRECINCT 14	
	0062-CAPITAL PRECINCT 62	
	0063-CAPITAL PRECINCT 63	
	0064-CAPITAL PRECINCT 64	
	0065-CAPITAL PRECINCT 65	
	0066-CAPITAL PRECINCT 66	
	0067-CAPITAL PRECINCT 67	
	0068-CAPITAL PRECINCT 68	
	0069-CAPITAL PRECINCT 69	
	0070-CAPITAL PRECINCT 70	
	0071-CAPITAL PRECINCT 71	
	0072-CAPITAL PRECINCT 72	
	0073-CAPITAL PRECINCT 73	
	0074-CAPITAL PRECINCT 74	
	0075-CAPITAL PRECINCT 75	
	CL02-CLEAR LAKE PRECINCT 2	
	CL03-CLEAR LAKE PRECINCT 3	
	CL04-CLEAR LAKE PRECINCT 4	
	CL05-CLEAR LAKE PRECINCT 5	
	CL06-CLEAR LAKE PRECINCT 6	
	CL07-CLEAR LAKE PRECINCT 7	
	CO01-COOPER PRECINCT 1	
	CT01-COTTON HILL PRECINCT 1	
	CU01-CURRAN PRECINCT 1	
	CU02-CURRAN PRECINCT 2	
	DI01-DIVERNON PRECINCT 1	
	DI02-DIVERNON PRECINCT 2	
	FC01-FANCY CREEK PRECINCT 1	
	FC02-FANCY CREEK PRECINCT 2	

Joe Aiello - Sangamon County Clerk
General Primary March 20, 2012

***** UNOFFICIAL RESULTS *****

Precinct Reporting: CAPITAL PRECINCT 65

REGISTERED VOTERS - TOTAL	696	
BALLOTS CAST - TOTAL	46	
BALLOTS CAST - REPUBLICAN	17	36.96
BALLOTS CAST - DEMOCRATIC	29	63.04
BALLOTS CAST - NONPARTISAN	0	0.00
BALLOTS CAST - BLANK	0	
VOTER TURNOUT - TOTAL		6.61

***** (REPUBLICAN) *****

PRESIDENT
Vote for 1

MITT ROMNEY	7	50.00
RON PAUL	2	14.29
RICK PERRY	0	
NEWT GINGRICH	2	14.29
CHARLES "BUDDY" ROEMER	0	
RICK SANTORUM	3	21.43
Total	14	
Over Votes	0	
Under Votes	3	

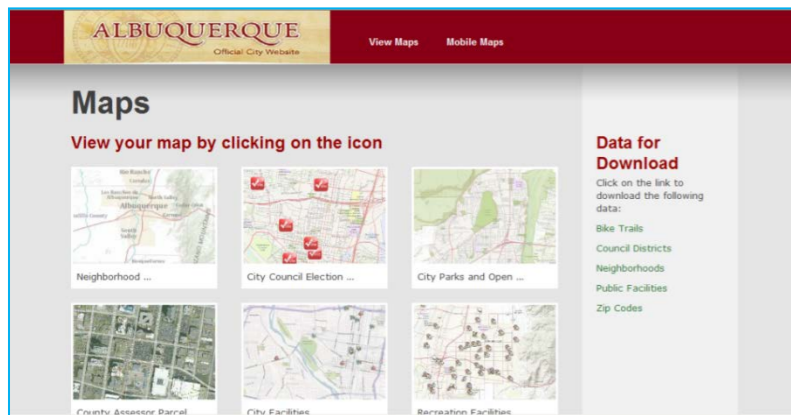
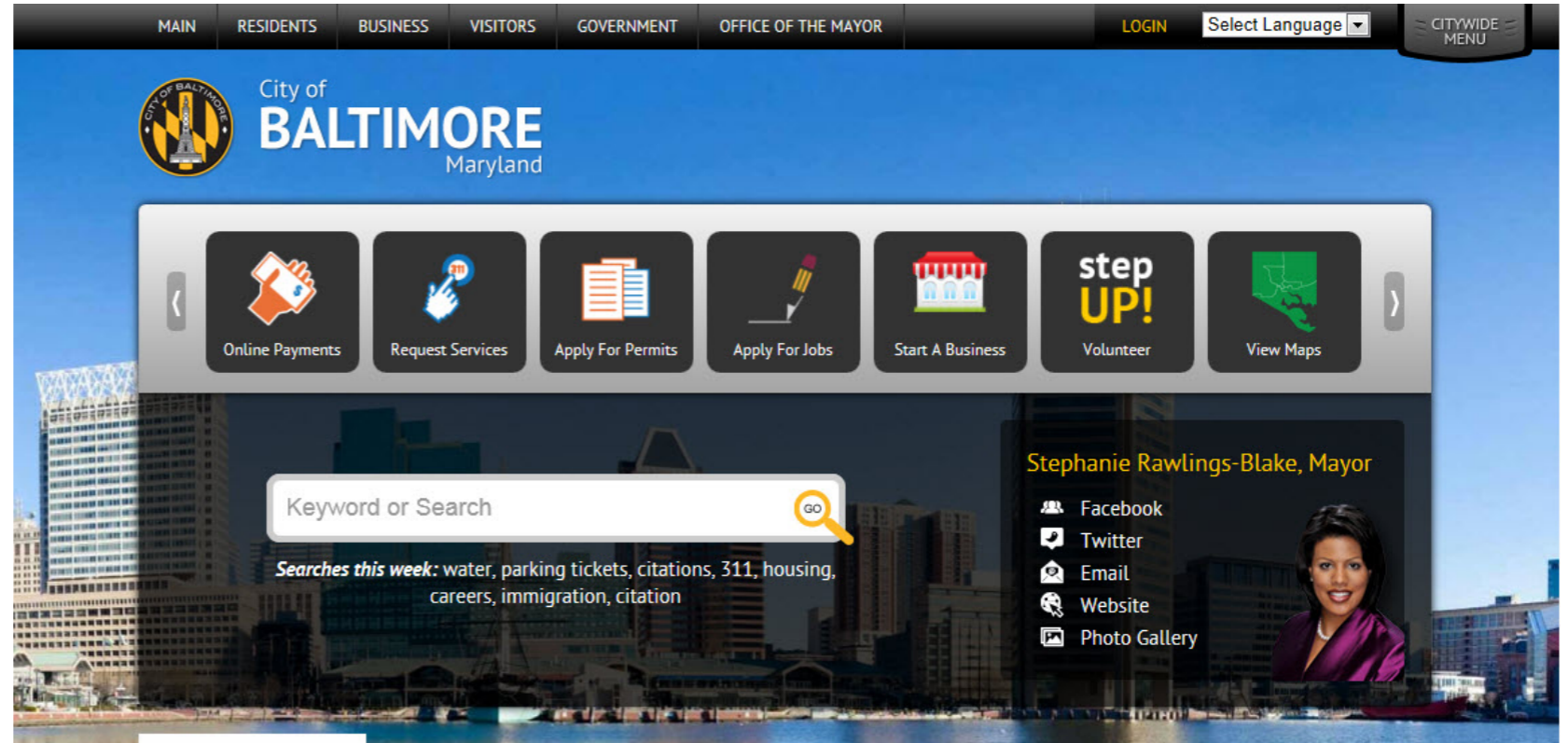
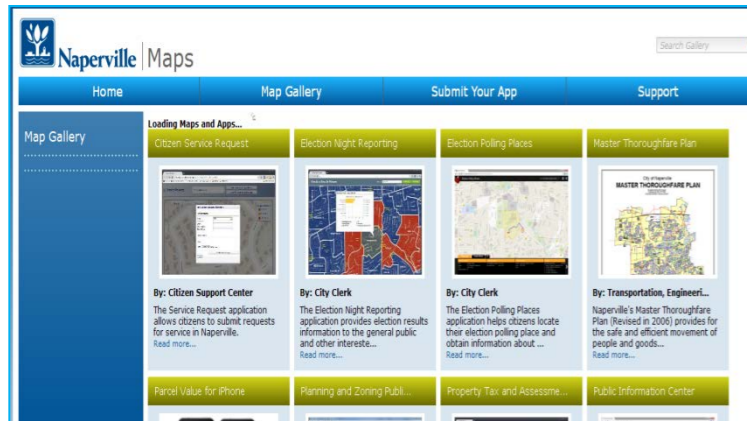
***** (DEMOCRATIC) *****

PRESIDENT
Vote for 1

BARACK OBAMA	27	96.43
Total	28	
Over Votes	0	



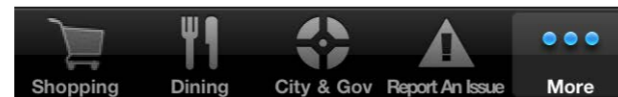
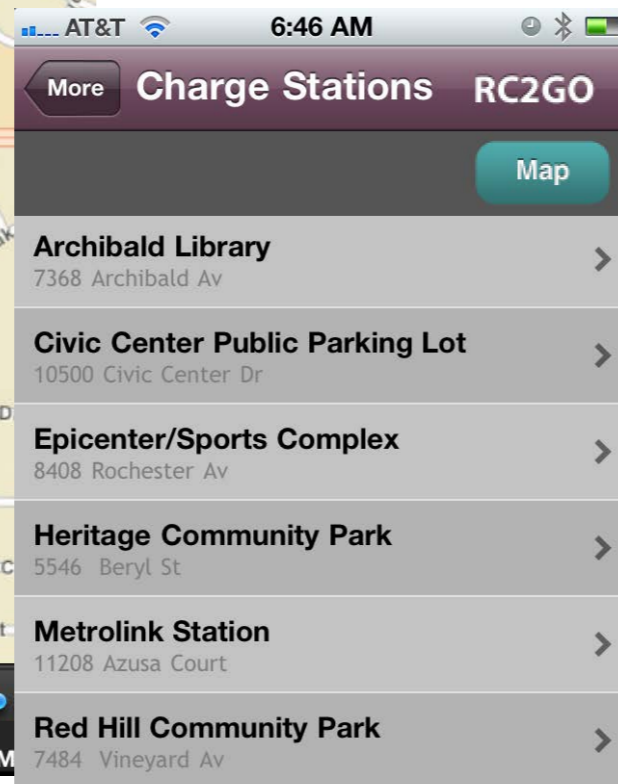
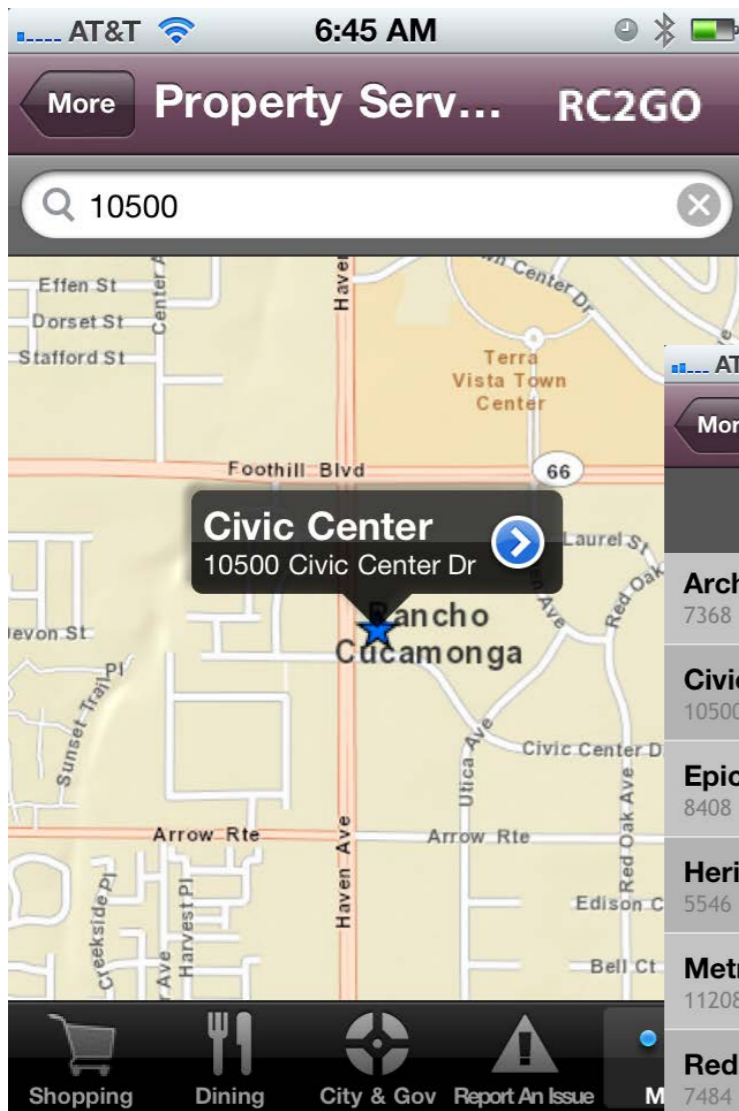
Creating a Destination



➤ Providing an Easy to Find Place

➤ Map and App Gallery

Create Reach



- Market Your Civic Engagement Apps
- Measure Your Success

ArcGIS.com

ArcGIS for local Government

The image shows a screenshot of the ArcGIS Resource Center website. The top navigation bar includes 'Communities', 'Help', 'Blog', 'Forums', and 'Videos', along with a search bar for the ArcGIS Resource Center. The main content area is titled 'ArcGIS for Local Government' and features a navigation menu with categories like 'Public Safety', 'Land Records', 'Elections', 'Planning & Development', 'Public Works', and 'Water Utilities'. A central article titled 'What is ArcGIS for Local Government?' is highlighted, accompanied by an aerial map and a 3D visualization of map layers. To the right, there are 'Quick Links' for various topics and a 'Support' section. Below the main content is a 'Gallery' of featured maps and applications, including 'Fire Run Book (ArcGIS 10)', 'Fire Station Wall Map (ArcGIS 10)', 'CyberServe Lite', 'iCity for iOS', and 'FME for Election Results'. The overall layout is clean and professional, with a blue and white color scheme.

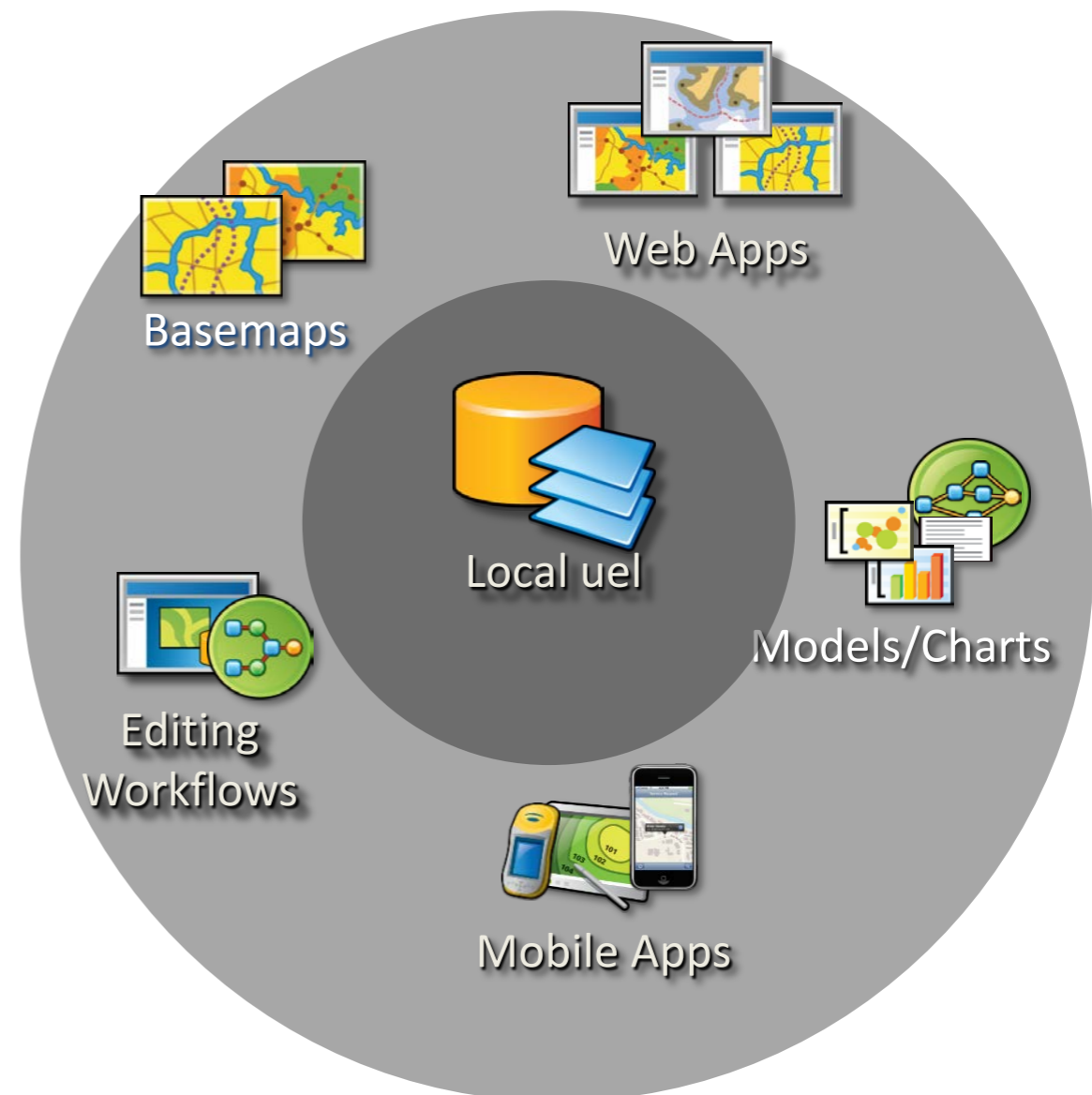
...a simple pattern to configure and use ArcGIS

ArcGIS for Local Government

Useful maps and apps that help local governments implement GIS

- Organized around the work you do in local government
- Land Records
- Public Infrastructure
- Elections
- Planning
- Public Safety
- Public Health
- Basemaps
-

- Available for free on ArcGIS.com



...a simple pattern to configure and use ArcGIS

ArcGIS.Com

ArcGIS Resources

ArcGIS Online

Sign In



Home Communities Help Blog Forums Videos

Search Local Government



ArcGIS for Local Government

Communities Public Safety Land Records Elections Planning & Development Public Works Water Utilities

ArcGIS for Local Government provides maps and apps that help you implement GIS in your local government, and a destination where users, partners, and the teams within Esri can collaborate.

How can I deploy it?

The maps and apps are organized into a set of modules that support common departmental business functions. Each module can be downloaded and configured individually in your organization.

[Read more...](#)



Quick Links

I'm interested in...

- Public Safety
- Land Records
- Elections
- Planning and Development
- Public Works
- Water Utilities
- ArcGIS for Local Government System

Support

- Help:10.1
- FAQ
- Forums
- Ideas
- Support

Community

- Partners
- Users

Gallery

[More Gallery posts](#)



Public Information Center (ArcGIS 10.1)



My Government Services (ArcGIS 10.1)



Land Use Public Notification (ArcGIS 10.1)

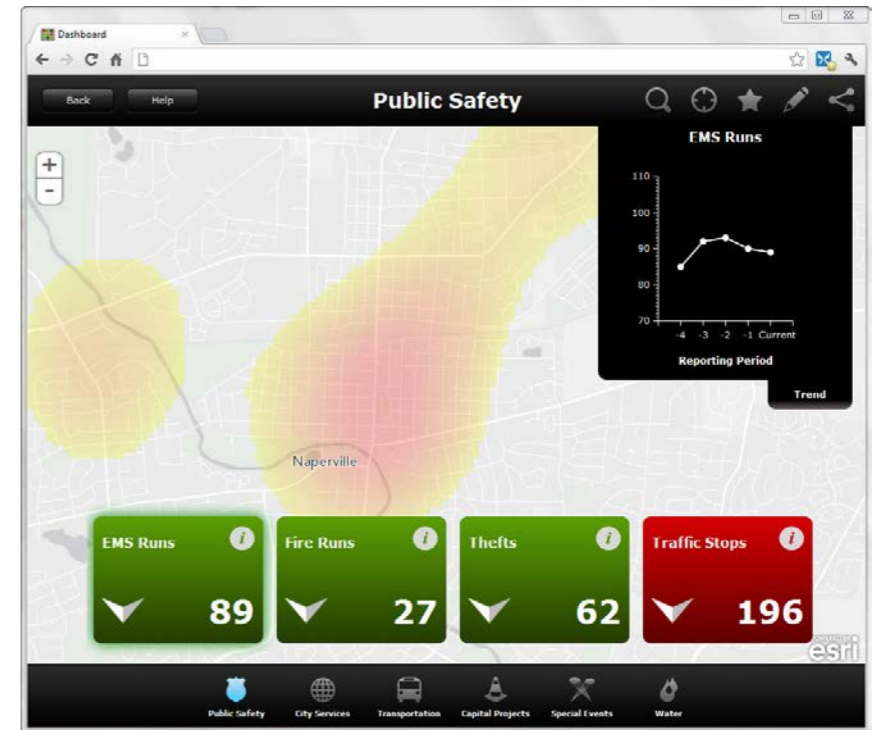


Land Use Public Comment (ArcGIS 10.1)

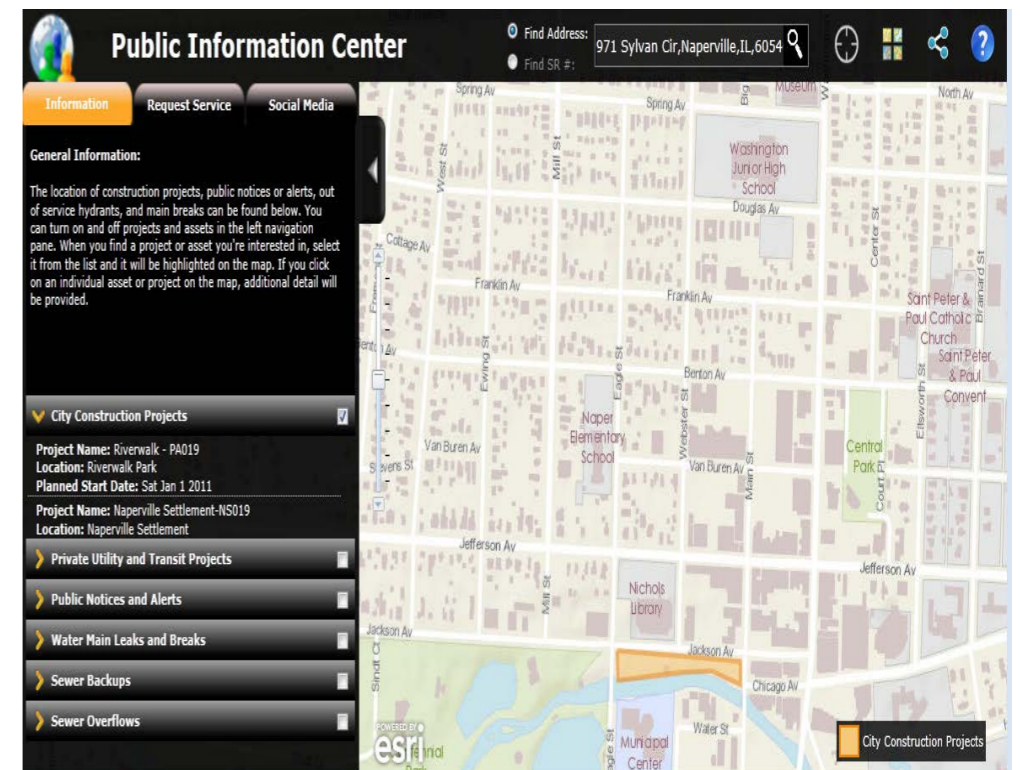


Election Results (ArcGIS 10.1)

Applications Gallery



Executive Dashboard



Public Information

Thank You

Christopher Thomas

cthomas@esri.com

@GIS_Advocate

909 793-2853

