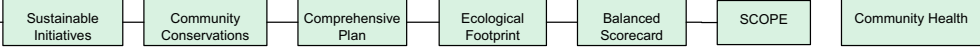


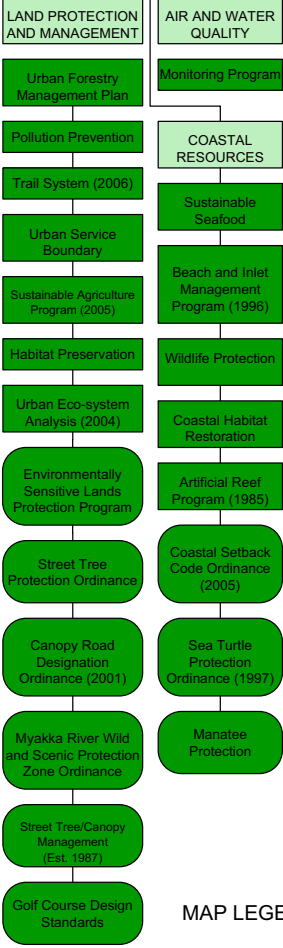
SARASOTA COUNTY ROADMAP TO A SUSTAINABLE AND RENEWABLE COMMUNITY

DRIVERS The human need for a quality place to live

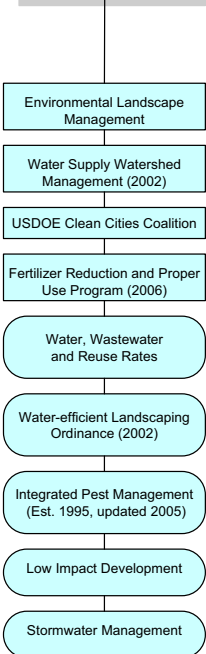


VEHICLES The programmatic approaches to achieving the goals established by the drivers

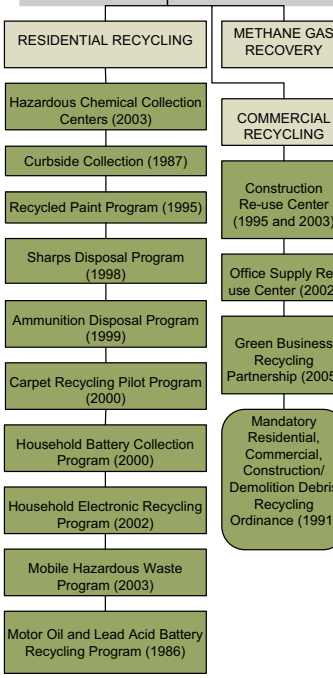
ENVIRONMENTAL CONSERVATION Maintain responsible stewardship of air, coastal protection and natural systems management.



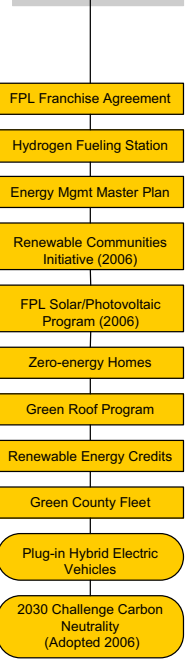
WATER CONSERVATION Ensure the quality and quantity of water resources while providing a safe and reliable water supply.



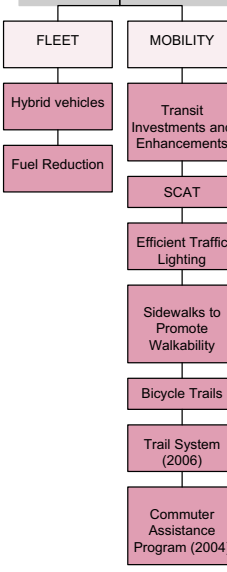
WASTE REDUCTION Reduce commercial and residential waste and increase recycling, explore alternative methods for waste disposal and storage, and explore ways to gain value from the waste produced.



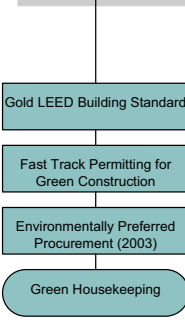
ENERGY REDUCTION Reduce and eventually eliminate the use of fossil-fuel, greenhouse gas-emitting energy sources.



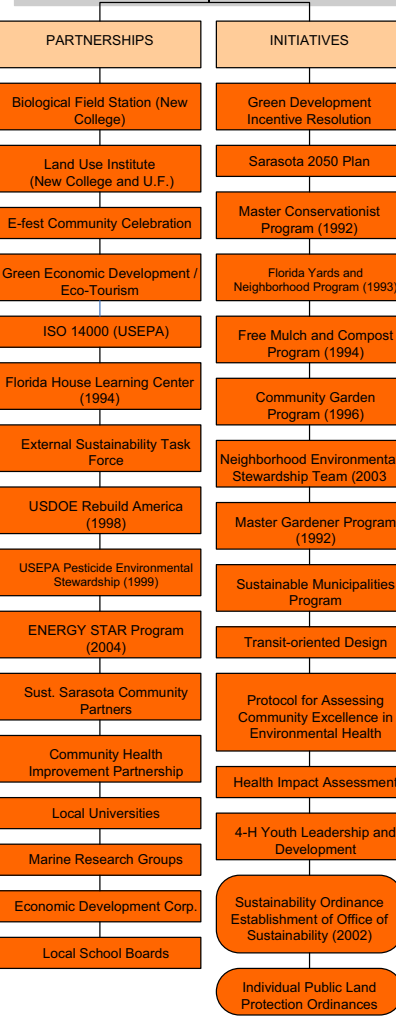
TRANSPORTATION Need goal from Mobility.



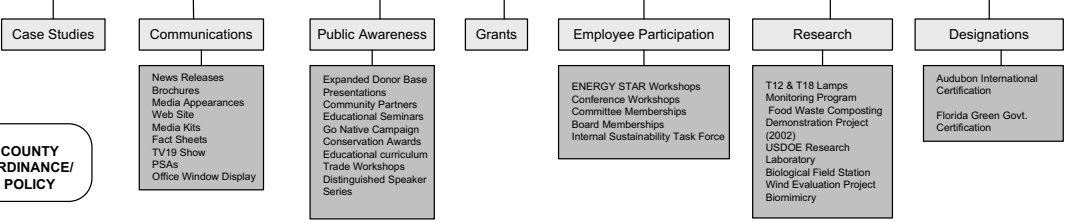
FACILITIES/ CONSTRUCTION Need goal from Michael Kirk.



COMMUNITY DESIGN AND DEVELOPMENT Share ownership and responsibility for designing, developing and delivering a successful sustainable community by creating partnerships that will develop initiatives for implementation.



FUELS Resources to help us power the vehicles



MAP LEGEND =

COUNTY PROGRAMS

COUNTY ORDINANCE/ POLICY